

Use of a Platform Formulation Technology to De-Risk Solid-State Variation in Drug Development

Dr. Gudrun Birk, Dr. Daniel Joseph Price, Dr. Markus Lubda

Active pharmaceutical ingredients (APIs) can exist in multiple crystal forms, known as polymorphs, that are chemically identical. Polymorphs of an API can appear over the course of development and lead to deviations across batches affecting stability, tableting properties, flowability, solubility, and release kinetics, and may ultimately result in a change in processability and drug (product) performance. These changes must be identified and addressed and as such, can have a significant impact on the success of the program, project timelines, and the investment of resources. While crystal structure prediction techniques can be used to identify possible polymorphs, their stability and morphological differences, especially the presence of unstable polymorphs, must be addressed to ensure product efficacy and safety.

A study by Cordeiro, et al., determined whether different formulation strategies could be used to stabilize molecules such as menthol which have a high polymorphism risk and a high risk of recrystallizing from the amorphous form.¹ Results of the study demonstrated a robust stabilization of menthol molecules by absorption onto the surface of a mesoporous silica carrier.

This white paper describes use of mesoporous silica as a porous carrier formulation technology to stabilize unstable polymorphs and to optimize solid state properties. The strategy can be used across a broad range of APIs and can thus serve as a platform technology for consistent particle properties leading to more efficient formulation development processes.

Mesoporous Silica as a Carrier for Unstable Polymorphs

Parateck® SLC excipient is a mesoporous silica that can serve as a porous solid carrier for formulations of APIs in which unstable polymorphs may be present. The excipient is based on silicon dioxide and is generally regarded as safe (GRAS) by regulatory authorities. The silica particles have a D50 of 17–25 µm with a bulk density of 0.32 g/mL, which can be increased when loading an API within the pore structure. Parateck® SLC excipient offers a very large surface area of 500 m²/g which is essential for performance as a carrier and has a very small average size of approximately 6 nm disordered pores which are essential for sterically stabilizing the amorphous form of APIs (Table 1).

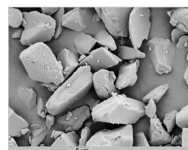
Table 1.

Properties of Parateck® SLC mesoporous silica.

Chemical formula: SiO₂

Pharmacopoeial monograph: Silicon Dioxide (USP) and Silica, colloidal hydrated (Ph. Eur.)

Regulatory status: Generally Regarded As Safe (GRAS)*



Typical values

Particle size	D50: 17–25 µm D90: 40–80 µm
Bulk density	0.32 g/mL (0.56 g/mL**)
Surface area	~500 m ² /g
Pore size	~6 nm (disordered)



* By the U.S. Food and Drug Administration

** Parateck® SLC loaded with 30% ibuprofen.
Density is increased upon loading with API.

For lab-scale loadings of 1–200 g of API onto Parateck® SLC mesoporous silica, an impregnation or suspension method with simple laboratory equipment can be used; no additional capital investment is needed. For the impregnation method, the Parateck® SLC excipient is placed in a beaker and the API, dissolved in an organic solvent, is dropped onto the carrier using a cannula. A suspension method can also be used in which the API in an organic solvent is mixed with the carrier and stirred. The organic solvent is then removed via evaporation. Loadings of up to several hundred kilograms can be accomplished by simply transferring the process to a larger scale and slowly applying the API solution to the carrier material to successfully stabilize the amorphous form within the mesoporous system.

Stabilization Mechanism

The API is stabilized in the amorphous form due to its interaction with the carrier via the large surface area (Figure 1). The risk of detecting another polymorph during the development phase is reduced because the amorphous stabilization prevents crystallization.

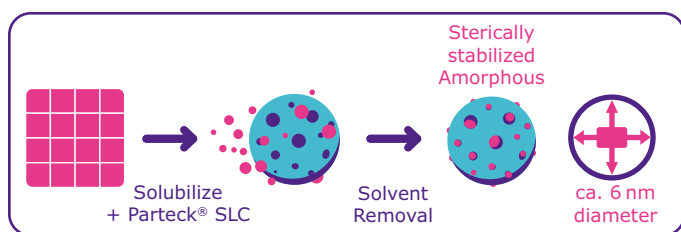


Figure 1.

Stabilization of the amorphous form of poorly soluble molecules using Parateck® SLC excipient.

To demonstrate the stabilization mechanism of mesoporous silica, fenofibrate, a poorly soluble molecule, was loaded onto Parateck® SLC excipient using the impregnation method; fenofibrate was

dissolved in acetone. The differential scanning calorimetry (DSC) graph in Figure 2 shows that the fenofibrate was present in its amorphous state when loaded on the Parateck® SLC excipient at 30%. As a reference, the crystalline API was included in the analysis. If the API is present in its crystalline solid-state, a melting endotherm occurs, as indicated by a downwards spike; if the API is within its amorphous form, this spike does not occur.

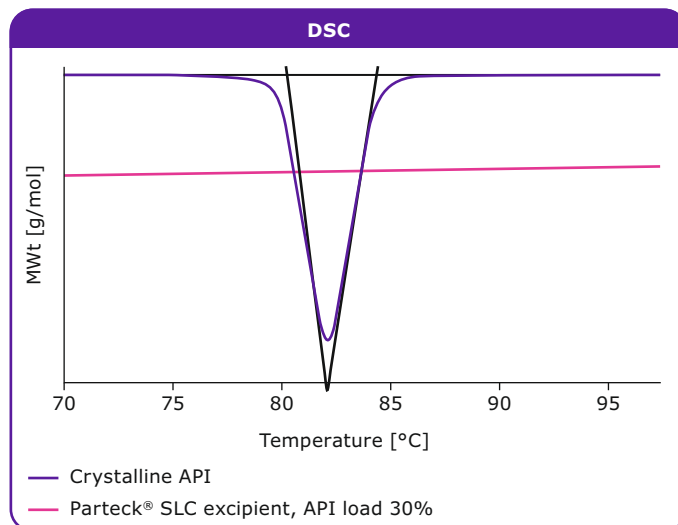


Figure 2.

DSC results show that fenofibrate is stabilized in its amorphous form when loaded onto Parateck® SLC excipient, in comparison to pure crystalline API.

A range of APIs with different chemistries, hydrophobicities, and molecular weights have been stabilized in the amorphous form by loading onto the Parateck® SLC excipient (Table 2). Parateck® SLC excipient is also a best-in-class technology for stabilizing amorphous forms of molecules which tend to recrystallize (poor glass former; GFA-I molecules such as carbamazepine) and are particularly difficult to formulate.²

Table 2.

Examples of poorly soluble APIs of different chemistry and physicochemical properties which were successfully stabilized in their amorphous form by loading onto Parateck® SLC silica.

	Solid-state	Drug Load [%]	LogP	MWt [g/mol]	pKa	BCS Class
Atenolol (ATN)	Amorphous	26	0.16	266	9.6 (basic)	III
Cinnarizine (CIN)		27	5.77	378	7.4 (basic)	II
Fenofibrate (FFB)		29	5.2	361	– (neutral)	II
Paracetamol (PAR)		29	0.91	151	9.5 (acidic)	I
Posaconazole (POS)		28	5.5	701	3.7 (basic)	II
Ibuprofen		30	3.97	207	5.3 (acidic)	II
Carbamazepine		29	2.77	236	– (neutral)	II
Haloperidol		30	4.3	376	8.3 (basic)	II
Indomethacin		28	4.27	358	4.5 (acidic)	II

Improving Galenical and Particle Properties

As shown in Table 2, APIs with different chemistries and physicochemical properties can be stabilized in their amorphous state using Parateck® SLC excipient. The following studies investigated the effect of loading various APIs onto Parateck® SLC excipient on critical properties of the solid formulation process such as particle size, flowability, and compression. Results demonstrated that the technology can be used across different APIs to improve solid state performance. Consistent particle properties opens

up the opportunity to use Parateck® SLC excipient as a platform technology in formulation development to improve process performance, formulation process efficiency, and drug performance.

A series of different APIs were loaded onto Parateck® SLC excipient and the resulting particle size determined to evaluate whether the excipient can be used successfully independent of the API and in the same formulation composition. The results showed that a similar medium particle size was achieved, regardless of the API, which is a prerequisite for use of the technology as general formulation approach (Figure 3).

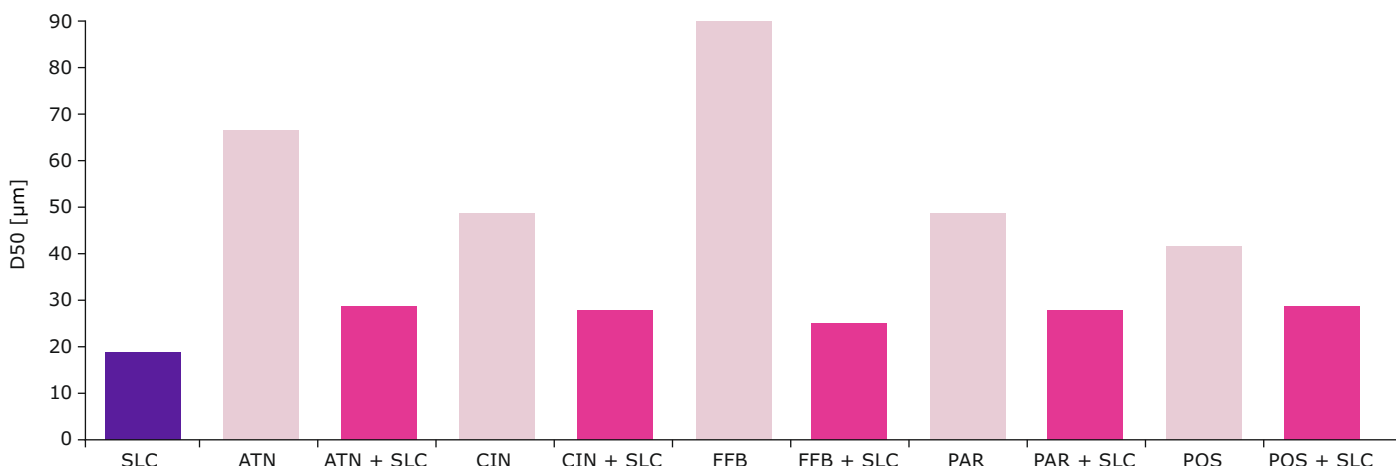


Figure 3.

Particle size distribution of model APIs atenolol (ATN), cinnarizine (CIN), fenofibrate (FFB), paracetamol (PAR), and posaconazole (POS) prior to and after loading onto Parateck® SLC mesoporous silica.

The flowability of a range of diverse small molecule APIs was improved compared to the pure API after loading onto the Parateck® SLC excipient carrier (Figure 4). The consistency in flowability indicates

that the properties for final formulation are similar across APIs, reinforcing the potential of this carrier technology to be widely applicable.

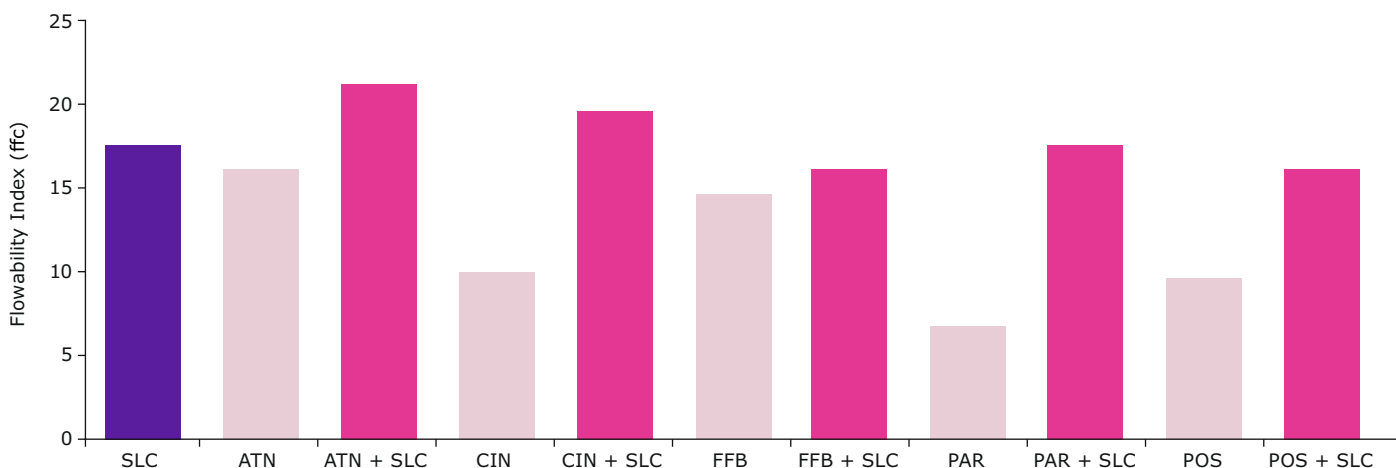


Figure 4.

Flowability of model APIs atenolol (ATN), cinnarizine (CIN), fenofibrate (FFB), paracetamol (PAR), and posaconazole (POS) prior to and after loading onto Parateck® SLC mesoporous silica.

Finally, the tensile strength and friability of tablets formulated with different APIs and the Parateck® SLC excipient were measured. Sufficient tablet hardness was achieved for all formulations as well as the desired low friability (Figure 5), indicating the broad applicability of this technology.

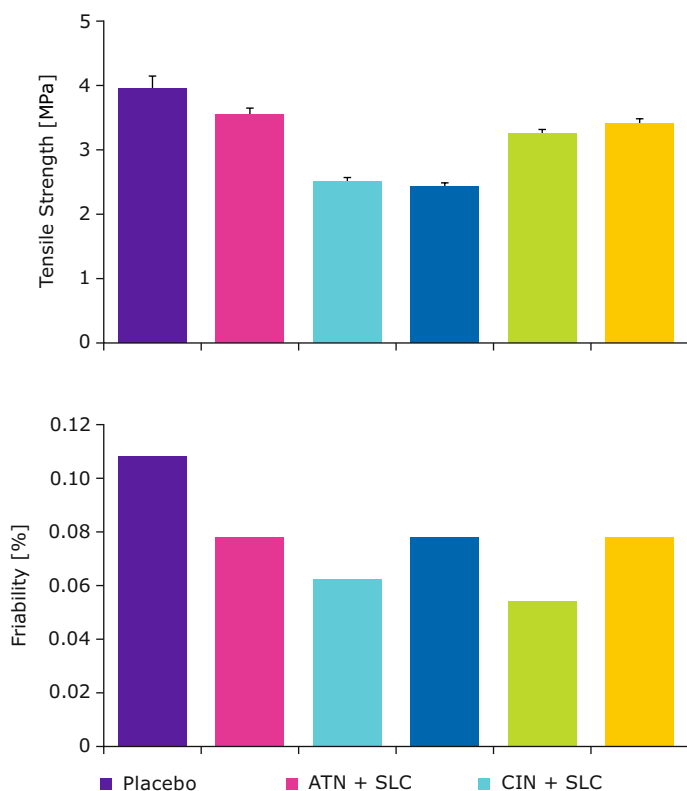


Figure 5.

Comparison of tensile strength and friability of tablets manufactured using API-loaded Parateck® SLC excipient confirming the good performance in direct compression tableting processes.

Composition of tablets: 25% loaded carrier, 51% microcrystalline cellulose, 20% mannitol, 2% croscarmellose sodium, 1% silicon dioxide, 1% magnesium stearate.

Conclusion

Unexpected polymorphic changes during the drug development can significantly extend timelines and require time- and labor-intensive investigations to identify and address the source of variation. The risk and challenges associated with these changes can be addressed using porous carrier technology based on mesoporous silica. The results presented confirm that Parateck® SLC mesoporous silica can be used to address polymorphic changes and de-risk solid state variation during drug development by stabilizing the amorphous form of APIs.

In addition, this white paper shows how Parateck® SLC excipient enables straightforward formulation development, delivering consistency in particle size, flowability, tablet hardness, and friability independent of the API. As such, it offers the unique opportunity to serve as a platform technology in formulation development for a wide range of APIs.

Reference

1. Cordeiro T, et al. Stabilizing unstable amorphous menthol through inclusion in mesoporous silica hosts. *Mol Pharm.* 2017. 14(9): 3164-3177. doi: 10.1021/acs.molpharmaceut.7b00386.
2. Ditzinger F, et al. Opportunities for Successful Stabilization of Poor Glass-Forming Drugs: A Stability-Based Comparison of Mesoporous Silica Versus Hot Melt Extrusion Technologies. *Pharmaceutics.* 2019 Nov 4;11(11):577. doi: 10.3390/pharmaceutics11110577.

MilliporeSigma

MilliporeSigma

400 Summit Drive

Burlington, MA 01803

For additional information, please visit [SigmaAldrich.com](https://www.sigmaaldrich.com)

To place an order or receive technical assistance, please visit [SigmaAldrich.com/contactAF](https://www.sigmaaldrich.com/contactAF)

