



**SIGMA-ALDRICH**

3050 Spruce Street  
Saint Louis, Missouri 63103 USA  
Telephone 800-325-5832 • (314) 771-5765  
Fax (314) 286-7828  
email: techserv@sial.com  
sigma-aldrich.com

## Product Information

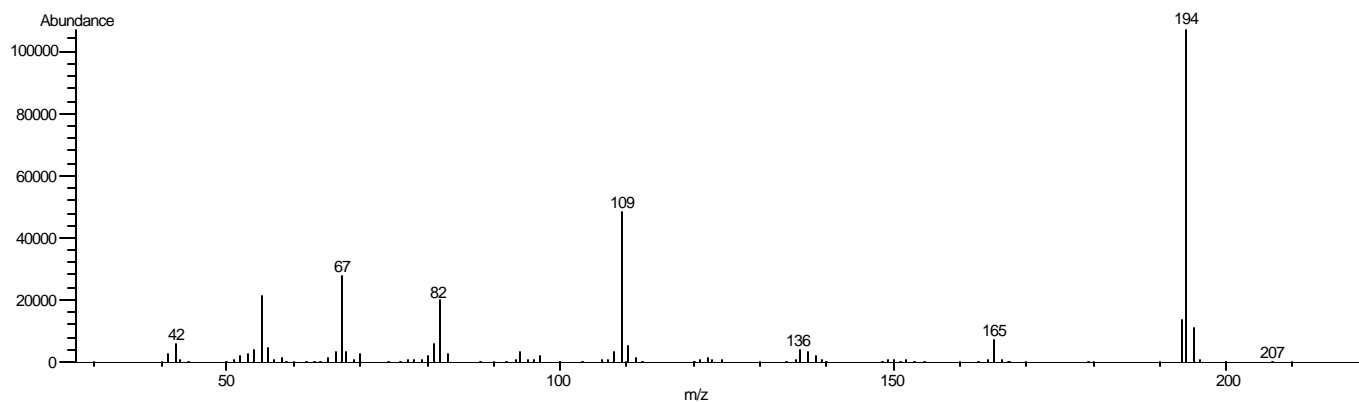
### CAFFEINE

Methanol Solution

**Product Number** C 6035  
**Lot Number** 073K8808  
**CAS Number** [58-08-2]  
**Concentration** 1.00 mg Caffeine/ml GC grade methanol (conc. verified by UV)  
**Molecular Formula**  $C_8H_{10}N_4O_2$   
**Molecular Weight** 194.2  
**DEA Class** Formulation of a non controlled substance

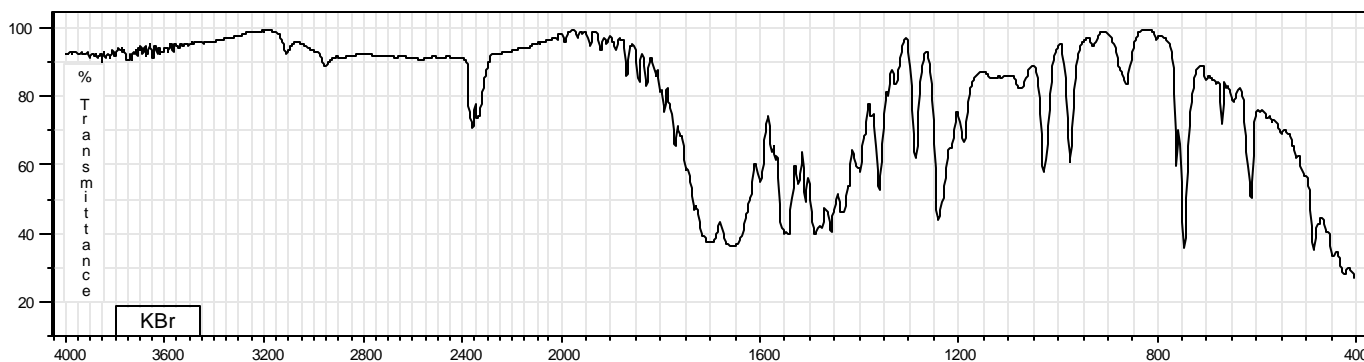
**Synonyms** Coffeinum; Guanine; Methyltheobromine  
**Stability** If stored at 2-8 °C in an air tight container, protected from light, decomposition of the product is less than 1% in 48 months. After opening, concentration may change due to loss of solvent.  
**Expiration Date** May 2008  
**Storage** 2-8 °C; After opening, transfer contents to small vial provided for your convenience.

70 eV Electron Ionization Mass Spectrum



Hewlett-Packard 5890 Series II Gas Chromatograph  
Hewlett-Packard 5971 Mass Selective Detector  
Hewlett-Packard G1034C MS ChemStation (HP-DOS series)

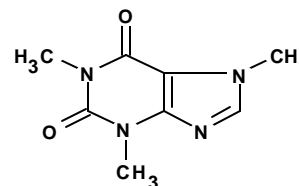
FT-IR



Mattson Galaxy 3020 FT-IR

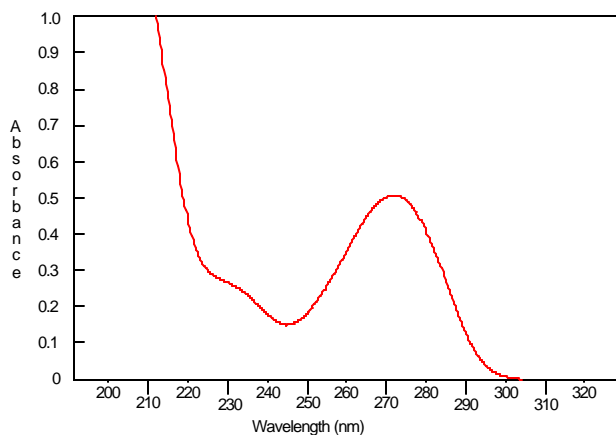
# CAFFEINE

Methanol Solution  
Product Number C 6035  
Lot Number 073K8808



## Ultraviolet Spectrum

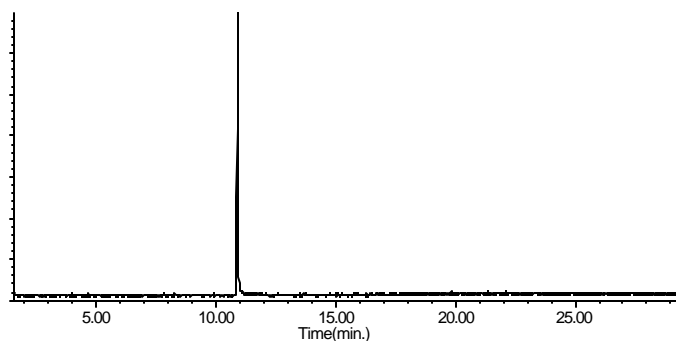
**Peak** 271.8 nm  
**Absorbance** 0.508  
**Solvent** 0.2 N H<sub>2</sub>SO<sub>4</sub>  
**Dilution** 1:99 (v/v)



Bio-Tek Uvikon XL

## Capillary Gas Chromatography

**Column** Supelco SPB-1 (Cat. No. 2-4162)  
**I.D.** 0.20 mm **Length** 15 m **Film Thickness** 0.20  $\mu$ m  
**Oven Temperature** 50°C (2 min.), then 15°/min. to 300°C, hold 11 min.  
**Injector Temperature** 250°C, Split  
**Detector** Hewlett-Packard 5971  
Mass Selective Detector (70 eV, 40-500 m/z)



Hewlett-Packard 5890

C 6035/073k8808/08/27/03

This product is not for *in vitro* diagnostic procedures. For R&D use only. Not for drug, household or other uses.

Sigma brand products are sold through Sigma-Aldrich, Inc.

Sigma-Aldrich, Inc. warrants that its products conform to the information contained in this and other Sigma-Aldrich publications.

Purchaser must determine the suitability of the product(s) for their particular use. Additional terms and conditions may apply.

Please see reverse side of the invoice or packing slip.