



3050 Spruce Street  
Saint Louis, Missouri 63103 USA  
Telephone 800-325-5832 • (314) 771-5765  
Fax (314) 286-7828  
email: techserv@sial.com  
sigma-aldrich.com

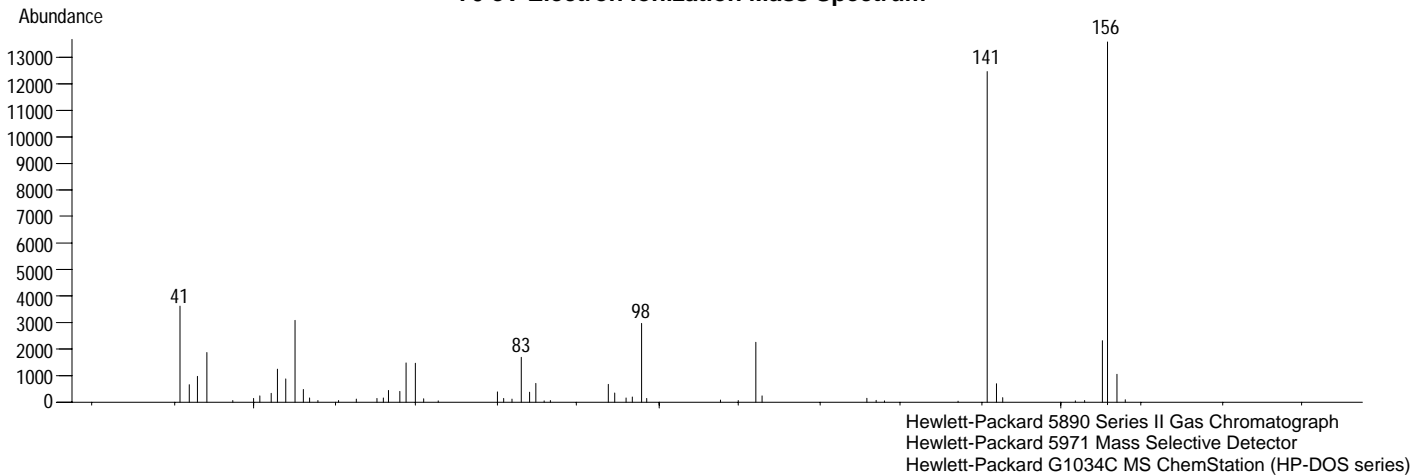
## Product Information

### BARBITAL

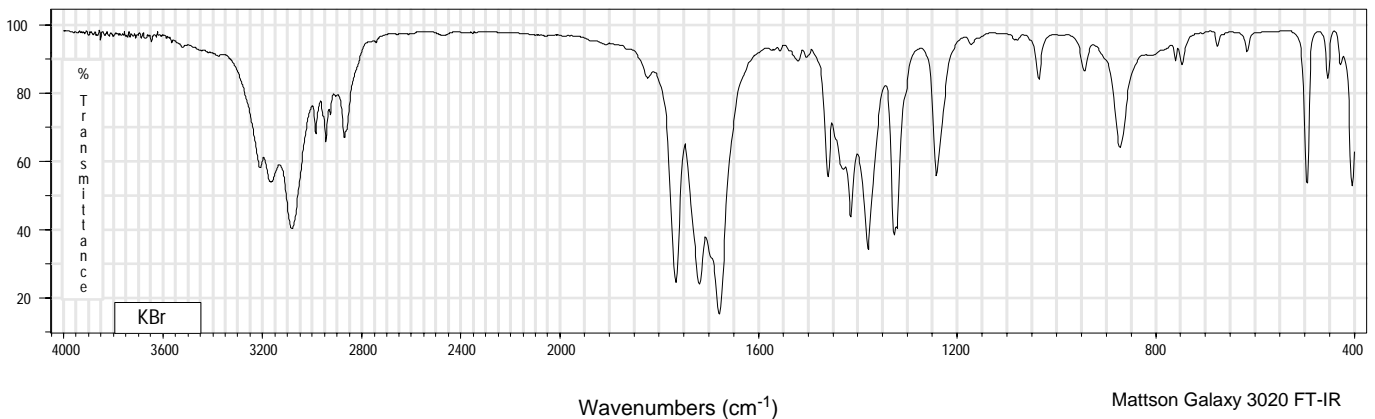
Methanol Solution

<b>Product Number</b>	B 8632	<b>Synonyms</b>	Barbitone, Malonal, Diethylmalonylurea
<b>Lot Number</b>	99H88041	<b>Stability</b>	If stored at 2-8°C in an air tight container, protected from light, decomposition of the product is less than 1% in 48 months. After opening, concentration may change due to loss of solvent.
<b>CAS Number</b>	[57-44-3]	<b>Expiration Date</b>	January 2008
<b>Concentration</b>	1.02 mg Barbitol/mL GC grade methanol (conc. verified by UV)	<b>Storage</b>	2-8°C; After opening, transfer contents to small vial provided for your convenience.
<b>Molecular Formula</b>	$C_8H_{12}N_2O_3$		
<b>Molecular Weight</b>	184.2		
<b>DEA Class</b>	Exempt preparation of Class IV		

### 70 eV Electron Ionization Mass Spectrum



### FT-IR

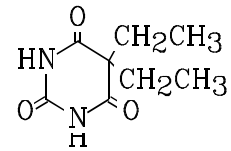


# BARBITAL

Methanol Solution

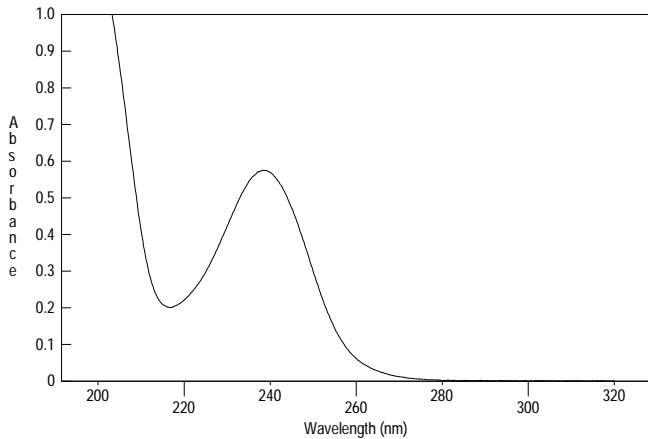
Product Number B 8632

Lot Number 99H88041



## Ultraviolet Spectrum

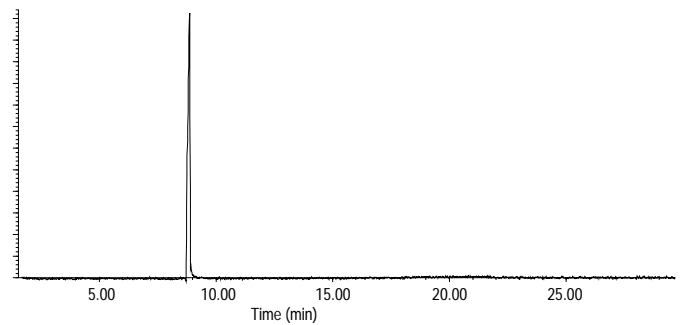
<b>Peak</b>	238.2 nm
<b>Absorbance</b>	0.575
<b>Solvent</b>	0.05 M Borax
<b>Dilution</b>	1 : 99 (v/v)



Kontron Uvikon 940

## Capillary Gas Chromatography

**Column** Supelco SPB-1 (Cat. No. 2-4162)  
**I.D.** 0.20 mm **Length** 15 m **Film Thickness** 0.20  $\mu\text{m}$   
**Oven Temperature** 50°C (2 min.), then 15°/min to 300°C, hold 11 min.  
**Injector Temperature** 250°C, Split  
**Detector** Hewlett-Packard 5971  
Mass Selective Detector (70 eV, 40-500 m/z)



Hewlett-Packard 5890

B 8632/99H88041/03/01/04

This product is not for *in vitro* diagnostic procedures. For R&D use only. Not for drug, household or other uses.

Sigma brand products are sold through Sigma-Aldrich, Inc.

Sigma-Aldrich, Inc. warrants that its products conform to the information contained in this and other Sigma-Aldrich publications.

Purchaser must determine the suitability of the product(s) for their particular use. Additional terms and conditions may apply.

Please see reverse side of the invoice or packing slip.