

Millipore  
SIGMA

# LET'S CREATE THE BETTER. TOGETHER.

SAFE SOLUTIONS FOR FOOD.



The life science business of  
Merck KGaA, Darmstadt, Germany  
operates as MilliporeSigma in  
the U.S. and Canada.

# WE ARE A LEADER IN LIFE SCIENCE

The Life Science business of Merck KGaA, Darmstadt, Germany brings together the world-class products and services, innovative capabilities, and exceptional talent of EMD Millipore and Sigma-Aldrich, to create a global leader in the life science industry. We operate as "MilliporeSigma".

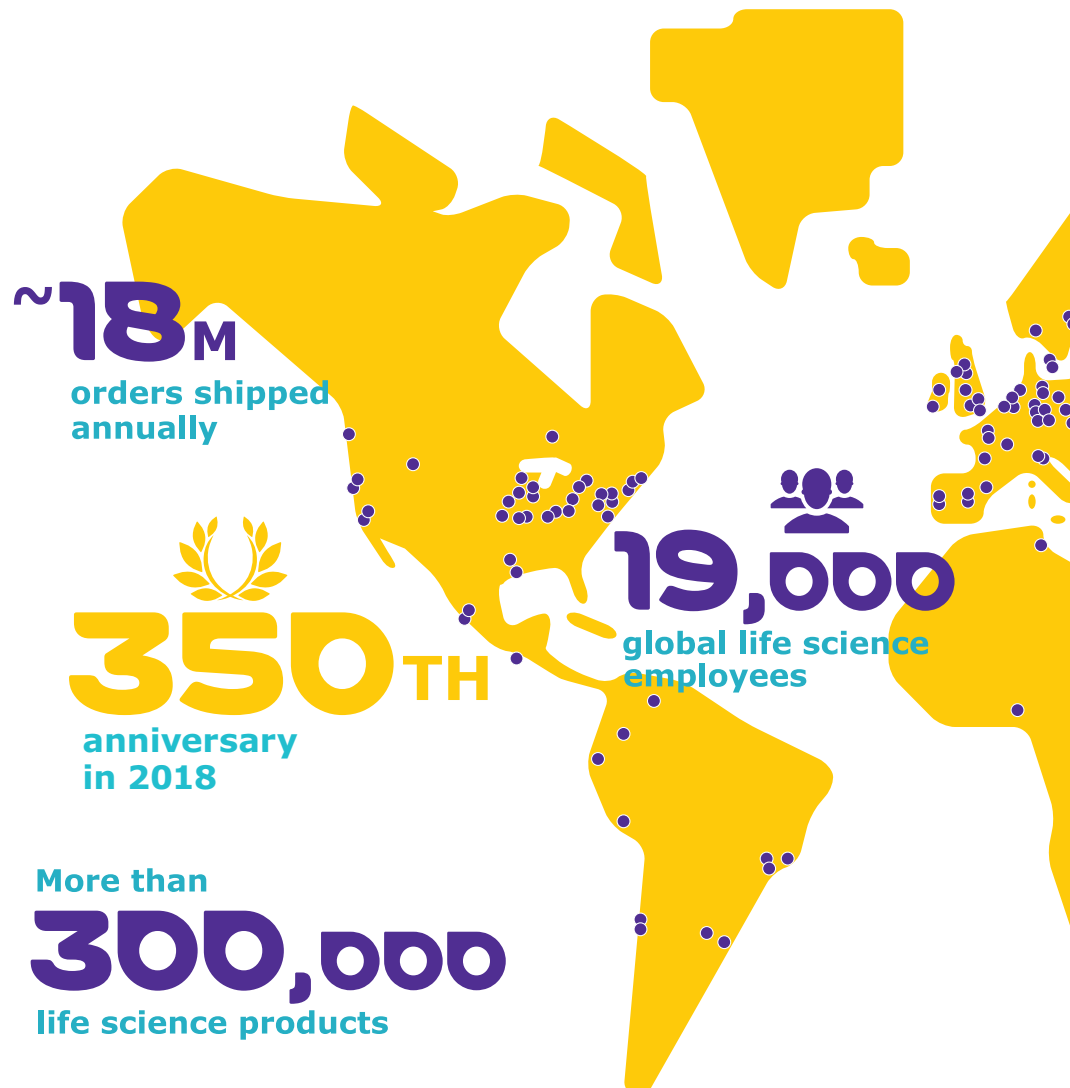
- We solve the toughest problems in the industry by collaborating with the global scientific community.
- We provide scientists with best-in-class lab materials, technologies and services.
- We can streamline your method development and productivity efficiently.

## We Can Make Your Life Straightforward and Help You with Risk Management and Regulatory Due Diligence:

- Products and services following the latest regulations to ensure compliance.
- Resources to meet your exact needs—customer-specific solutions.
- Warehouse and supply chain management with a one-stop shop for prompt delivery and local support.
- Support with applications and methods including value-added services.

## We are More than Just a Distributor

- We are the manufacturer of most of the products we offer.
- You can be confident that quality and service are both as important to us as they are to you.



# Get the results as expected each and every time with our expanded offering

## OUR STRENGTHS

- Compliant manufacturing sites
- Breadth and value of portfolio with a complete workflow offer
- Global footprint
- Supply chain capabilities for reliable delivery, one-stop shop
- Widespread delivery capabilities from third party distributors

## OUR KNOW-HOW

- Active product innovation and strong R&D
- Quality and regulatory compliance with complete safety solutions
- Technical and regulatory expertise - certifications (ISO 13485, cGMP, FSSC 22000 etc.)
- Data traceability and result reliability

## OUR ASSETS

- Reference materials and proficiency testing portfolio
- 24/7 technical support skills and best-in-class customer service
- Consistency and reliability across geographies

More than



1M  
life science customers globally

65

manufacturing sites worldwide

130



life science distribution centers

Founded in

1668

world's oldest chemical & pharmaceutical company



Present in

66

countries



WORKFLOW: FOOD

# SAFE SOLUTIONS FOR FOOD.



**1**  
**SAMPLE LOG IN**



**2**  
**PREPARATION**

**ANALYTICAL SAMPLE PREP**  
**Instrumental Test Kits**

- RQflex® 20
- Reflectoquant® Test Strips
- Lab Water systems**
- Milli-Q®

**Chromatography sample prep**

- Smplicity®, Millex® filters and SPE tubes and vacuum manifold, QuEChERS tubes and shakers

**SPME**

- SPME fibers



**Solvents**

- LiChrosolv®

**Acids and Bases**

- EMSURE® inorganic reagents and solvents

**MICROBIOLOGY SAMPLE PREP**

**Homogenizer**

- ESH

**Sample dilution**

- DiluCult™

**Sample enrichment**

- GranuCult™



3

## ANALYSIS

### SAMPLE ANALYSIS

#### Chromatography

- HPLC, UHPLC and GC Columns

#### Thin Layer

#### Chromatography

- TLC Plates

#### Lab Water systems

- Milli-Q®

#### Titration

- Titripur®, Titripac®

#### Disinfection residue checking

- MQuant™ test strips
- Reflectoquant™ strips
- Move colorimeter and test kits

#### Spectrophotometry

- Spectroquant® spectrophotometers, test kits

#### Karl Fischer reagents

- Aquastar™

#### Solvents

- LiChrosolv®

#### Acids and Bases

- EMSURE® inorganic reagents and solvents

#### Ready-to-use culture media

- ReadyPlate™

#### Dehydrated culture media

- GranuCult™ Media

#### Lab Water Systems

- Milli-Q®

### MICROBIOLOGY SAMPLE ANALYSIS

#### Microbial air monitoring

- MAS-100®, MAS-100 Eco®

#### Surface monitoring

- Contact plates and MVP ICON®

#### Rapid pathogen detection

- Assurance GDS™ and PIPETMAX®



4

## RESULT INTERPRETATION

### Microbial identification

- ChromoCult® agar plates



5

## QA SUPPORT

### Supporting Documentation

- Certificates of analysis, Safety data sheets and Validation Guides, Milli-Q System Validation Standards and Certified Reference Materials

- Vitroids™, Lenticule®



# PARTNERING WITH US REDUCES TOTAL COST OF OWNERSHIP AND MITIGATES SUPPLY CHAIN RISK.

- Forecasting
- Procurement / e-commerce
- Manufacturing / off-the-shelf
- Packaging flexibility
- Shipping
- Tracking & traceability

Our global supply chain is designed to meet the highest quality service levels across your organization. From forecasting, to inventory and distribution planning, our advanced ordering process and resources are customized to anticipate and meet your business needs.

We have developed a full range of e-commerce services designed to enable greater spend control for your procurement staff, and provide your researchers with ease of access to the products they've come to rely on.

If you're looking to reduce inventory, automate payments, increase procurement fiscal control, and/or reduce costs—we can tailor a convenient and cost saving e-solution to fit your needs.

Discover how our website is making it easier for you to stay productive and conduct your daily activities in a more efficient manner.

[SigmaAldrich.com/united-states/  
ordering/e-Commerce-Solutions](https://SigmaAldrich.com/united-states/ordering/e-Commerce-Solutions)



**WHAT IF  
TRUST DIDN'T NEED  
TO BE QUESTIONED?  
LET'S CREATE A RELIABLE AND SECURE  
SUPPLY CHAIN. TOGETHER.**

**View additional product information, applications,  
real-time availability, ordering and contact information  
at [SigmaAldrich.com](http://SigmaAldrich.com)**

MilliporeSigma  
300 Wheeler Rd.  
Burlington, MA 01803

