

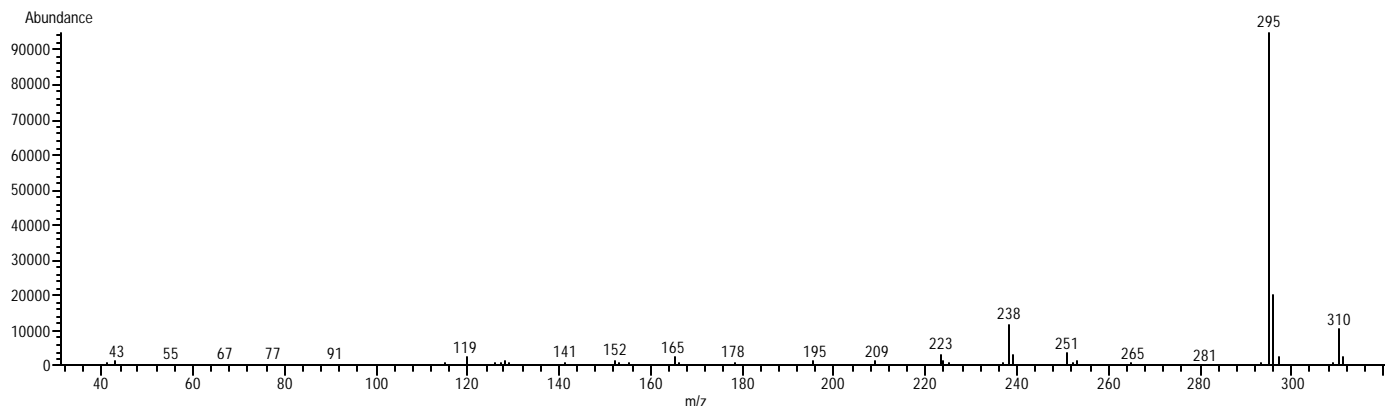
Product Information

CANNABINOL

Methanol Solution

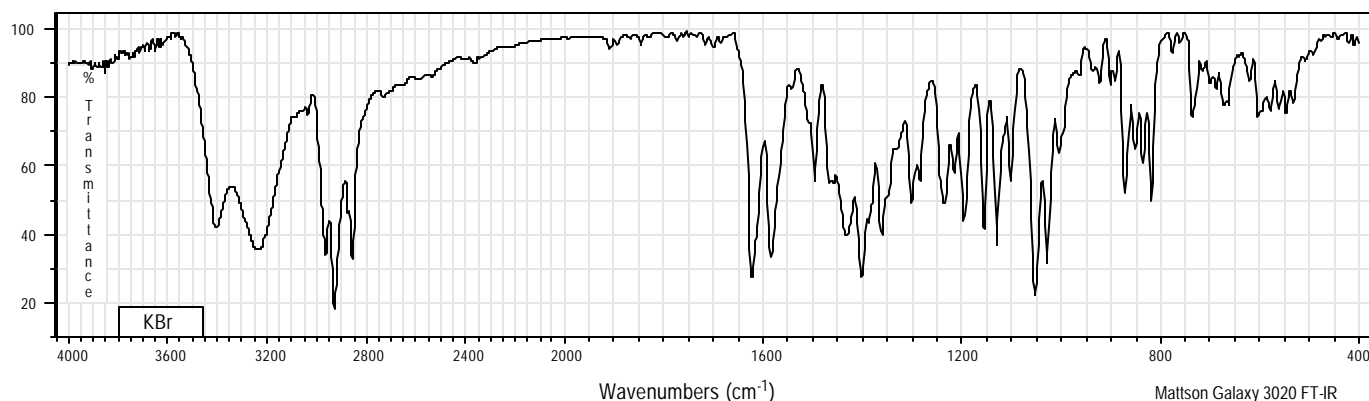
Product Number	C 6520	Synonyms	6,6,9-Trimethyl-3-pentyl-6H-dibenzo[b,d]pyran-1-ol; CBN
Lot Number	41K8801	Stability	If stored at 2-8°C in an air tight container, protected from light, decomposition of the product is less than 1% in 48 months. After opening, concentration may change due to loss of solvent.
CAS Number	[521-35-7]	Expiration Date	December 2005
Concentration	1.02 mg Cannabinol/mL GC grade methanol (conc. verified by UV)	Storage	2-8°C; After opening, transfer contents to small vial provided for your convenience.
Molecular Formula	C ₂₁ H ₂₆ O ₂		
Molecular Weight	310.4		
DEA Class	Exempt preparation of Class I		

70 eV Electron Ionization Mass Spectrum



Hewlett-Packard 5890 Series II Gas Chromatograph
 Hewlett-Packard 5971 Mass Selective Detector
 Hewlett-Packard G1034C MS ChemStation (HP-DOS series)

FT-IR



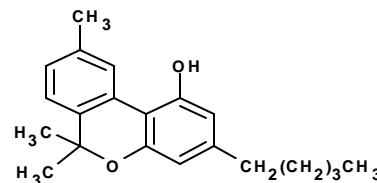
Mattson Galaxy 3020 FT-IR

CANNABINOL

Methanol Solution

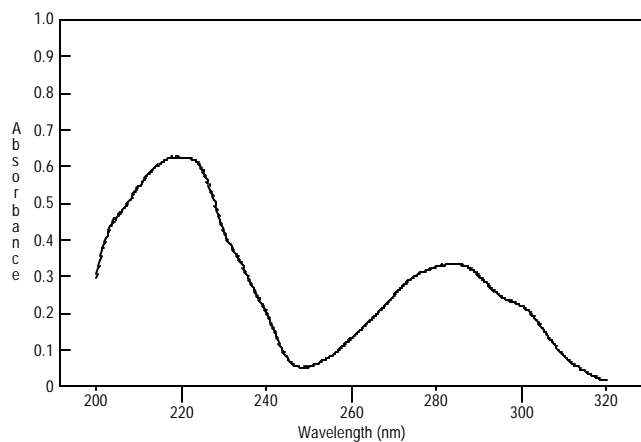
Product Number C 6520

Lot Number 41K8801



Ultraviolet Spectrum

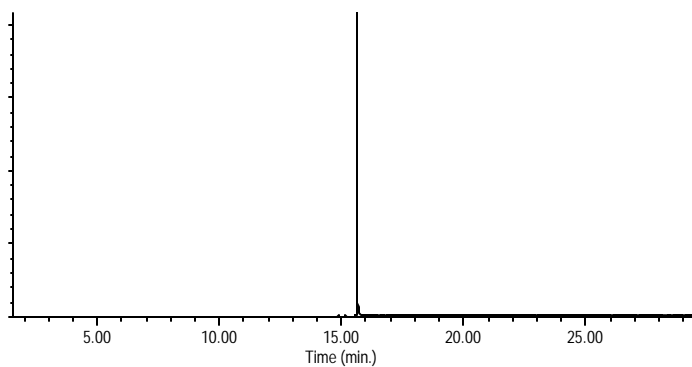
Peak	283.8 nm
Absorbance	0.335
Solvent	Methanol
Dilution	1 : 199 (v/v)



Kontron Uvikon 940

Capillary Gas Chromatography

Column Supelco SPB-1 (Cat. No. 2-4162)
I.D. 0.20 mm **Length** 15 m **Film Thickness** 0.20 μm
Oven Temperature 50°C (2 min.), then 15°/min. to 300°C, hold 11 min.
Injector Temperature 250°C, Split
Detector Hewlett-Packard 5971
Mass Selective Detector (70 eV, 40-500 m/z)



Hewlett-Packard 5890

C 6520/41K8801/04/13/01

This product is not for *in vitro* diagnostic procedures. For R&D use only. Not for drug, household or other uses.

Sigma brand products are sold through Sigma-Aldrich, Inc.

Sigma-Aldrich, Inc. warrants that its products conform to the information contained in this and other Sigma-Aldrich publications.

Purchaser must determine the suitability of the product(s) for their particular use. Additional terms and conditions may apply.

Please see reverse side of the invoice or packing slip.