

Product Information

Caffeine solution

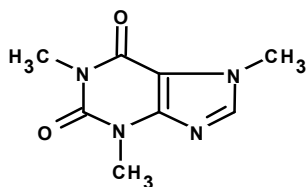
1.0 mg/mL±5% in methanol
analytical standard, for drug analysis

Catalog Number **C6035**
Lot Number 081M8704
Storage Temperature 2–8 °C

CAS RN 58-08-2
Synonyms: Coffeinum; Guanine; Methyltheobromine

Concentration: 0.97 mg of caffeine/mL of GC grade methanol (concentration verified by UV)

Expiration Date: May 2014



Precautions and Disclaimer

This product is for R&D use only, not for drug, household, or other uses. Please consult the Material Safety Data Sheet for information regarding hazards and safe handling practices.

Storage/Stability

Store the product at 2–8 °C.

Product Description

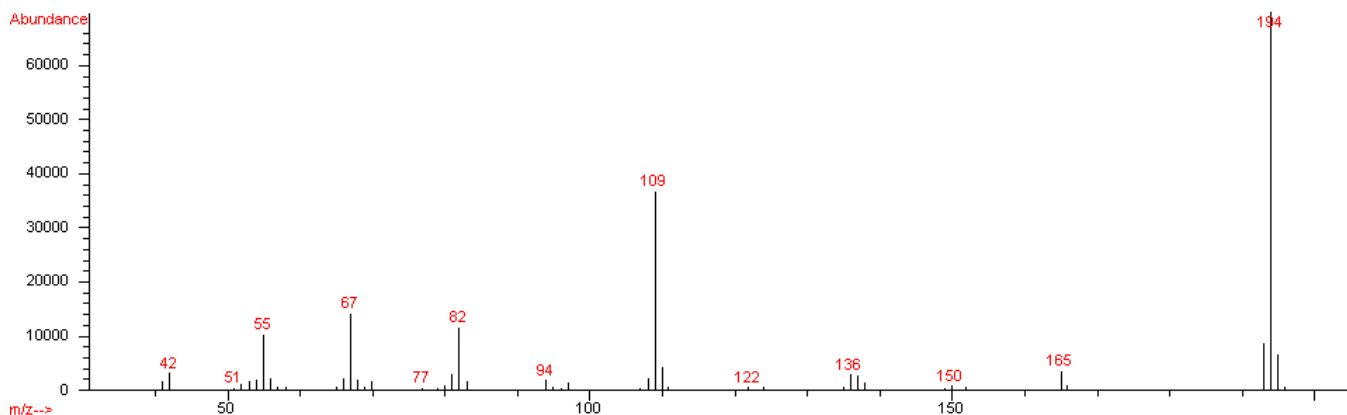
Molecular Formula: C₈H₁₀N₄O₂
Molecular Weight: 194.19

DEA Class: Formulation of a non-controlled substance

If stored at 2–8 °C in an airtight container, protected from light, decomposition of the product is less than 1% in 48 months. After opening, concentration may change due to loss of solvent.

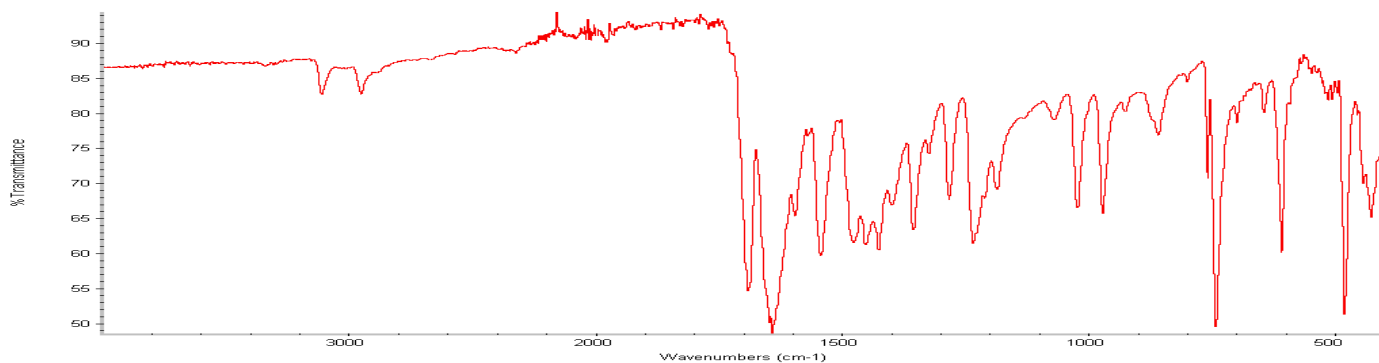
CMW,MAM 07/11-1

70 eV Electron Ionization Mass Spectrum



Hewlett-Packard 5890 Series II Gas Chromatograph
Hewlett-Packard 5971 Mass Selective Detector
Hewlett-Packard G1034C MS ChemStation (HP-DOS series)

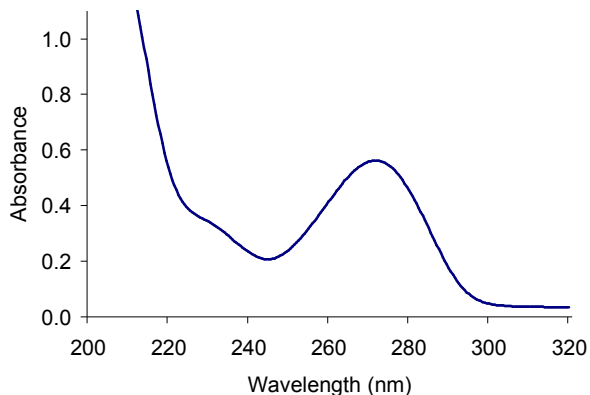
FT-IR



Nicolet 380 FT-IR Thermo Smart Orbit

Ultraviolet Spectrum

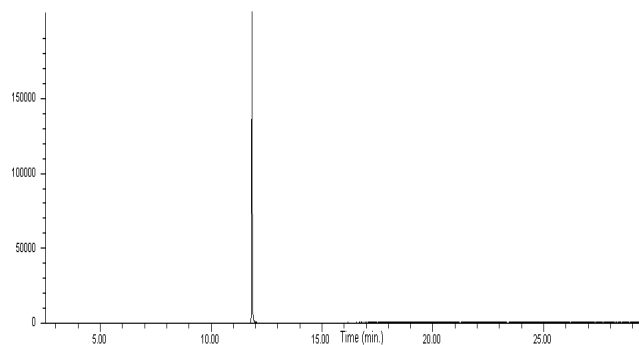
Peak	271.5 nm
Absorbance	0.5136
Solvent	0.2 N H ₂ SO ₄
Dilution	1:100 (v/v)



Beckman-Coulter DU 800

Capillary Gas Chromatography

Column Supelco SPB-1 (Catalog Number 24162)
I.D. 0.20 mm **Length** 15 m **Film Thickness** 0.20 μm
Oven Temperature 50 °C (2 minutes), then
15 °C/minute to 300 °C, hold 11 minutes
Injector Temperature 250 °C, Split
Detector Hewlett-Packard 5971
Mass Selective Detector (70 eV, 40-500 m/z)



Hewlett-Packard 5890

Sigma brand products are sold through Sigma-Aldrich, Inc.

Sigma-Aldrich, Inc. warrants that its products conform to the information contained in this and other Sigma-Aldrich publications. Purchaser must determine the suitability of the product(s) for their particular use. Additional terms and conditions may apply. Please see reverse side of the invoice or packing slip.