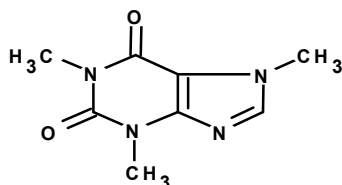


Product Information

Caffeine solution
1.0 mg/mL±5% in methanol
analytical standard

Catalog Number **C6035**
Lot Number SLBM5381V
Storage Temperature 2–8 °C

CAS RN 58-08-2
Synonyms: Coffeinum, Guaranine, Methyltheobromine



Product Description
Molecular Formula: C₈H₁₀N₄O₂
Molecular Weight: 194.19

DEA Class: Formulation of a non-controlled substance

Concentration: 1.02 mg caffeine/mL of GC grade methanol (concentration verified by UV)

Expiration Date: March 2018

Precautions and Disclaimer

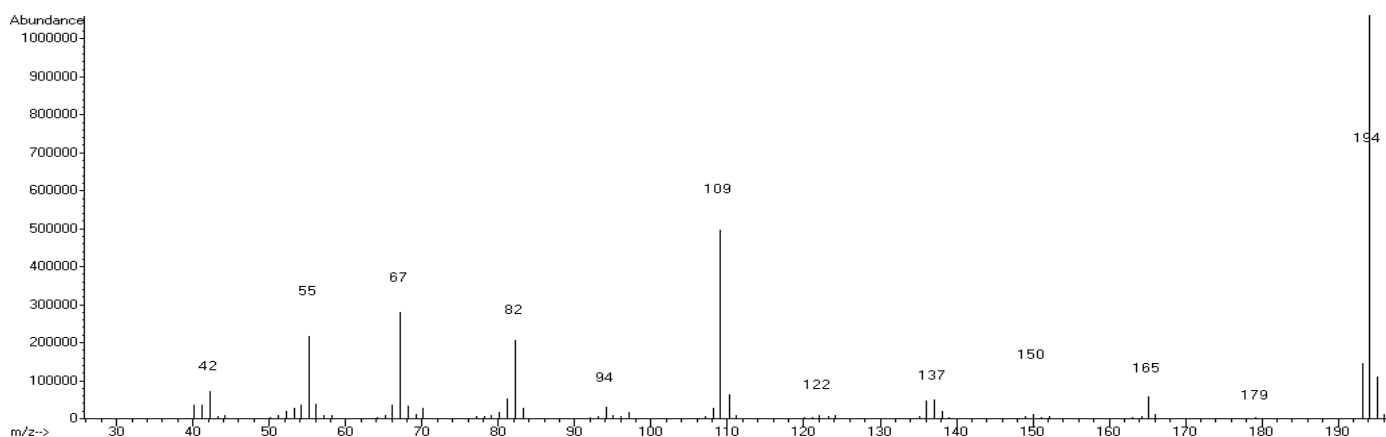
This product is for R&D use only, not for drug, household, or other uses. Please consult the Safety Data Sheet for information regarding hazards and safe handling practices.

Storage/Stability

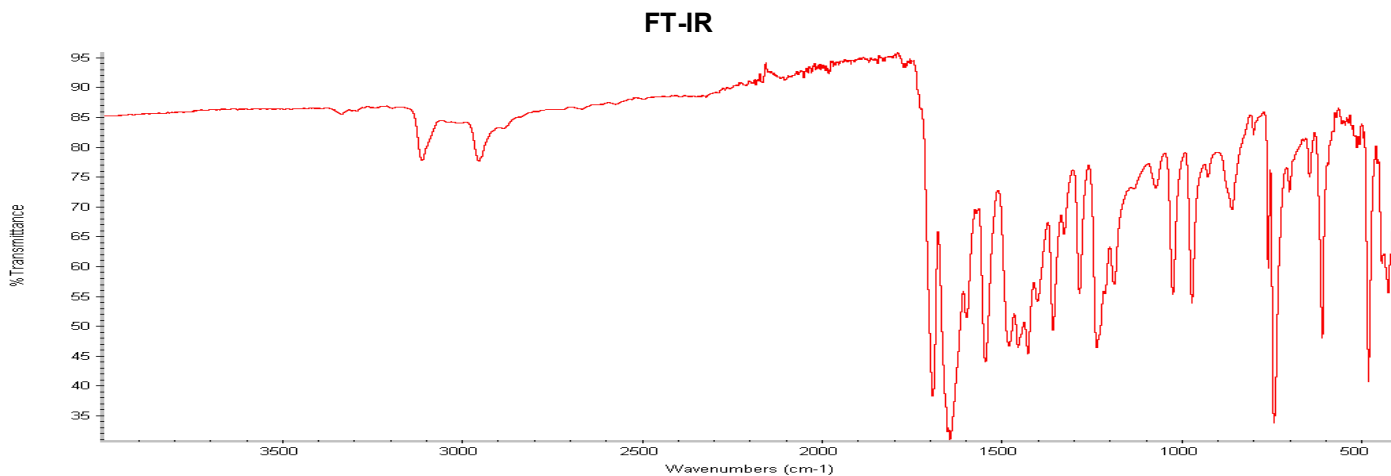
Store the product at 2–8 °C. If stored at 2–8 °C in an airtight container, protected from light, decomposition of the product is less than 1% in 48 months. After opening, concentration may change due to loss of solvent.

CMW,MAM 03/15-1

70 eV Electron Ionization Mass Spectrum



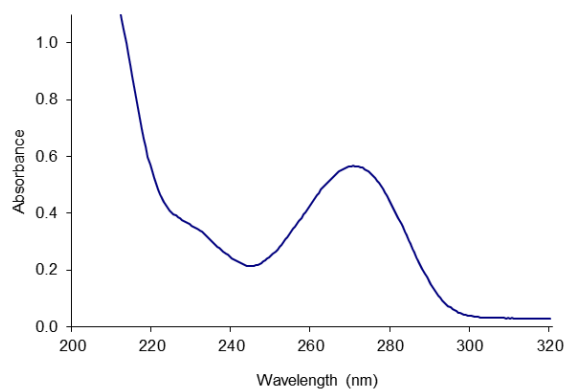
Hewlett-Packard 6890 Series II Gas Chromatograph
Hewlett-Packard 5973 Mass Selective Detector
Hewlett-Packard G1701DA MS ChemStation (HP-DOS series)



Nicolet 380 FT-IR with Thermo Smart Orbit attachment

Ultraviolet Spectrum

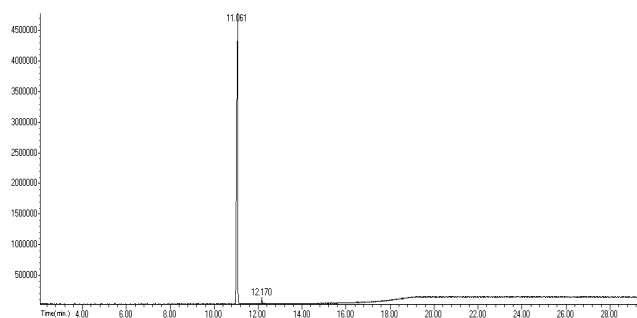
Peak	271.0 nm
Absorbance	0.5651
Solvent	0.2 N H ₂ SO ₄
Dilution	1:99 (v/v)



Beckman-Coulter DU 800

Capillary Gas Chromatography

Column Supelco SPB-1 (Catalog Number 24162)
I.D. 0.20 mm **Length** 15 m **Film Thickness** 0.20 μm
Oven Temperature 50 °C (2 minutes), then
 15 °C/minute to 300 °C, hold 11 minutes
Injector Temperature 250 °C, Split
Detector Hewlett-Packard 5973
 Mass Selective Detector (70 eV, 40-500 m/z)



Hewlett-Packard 6890