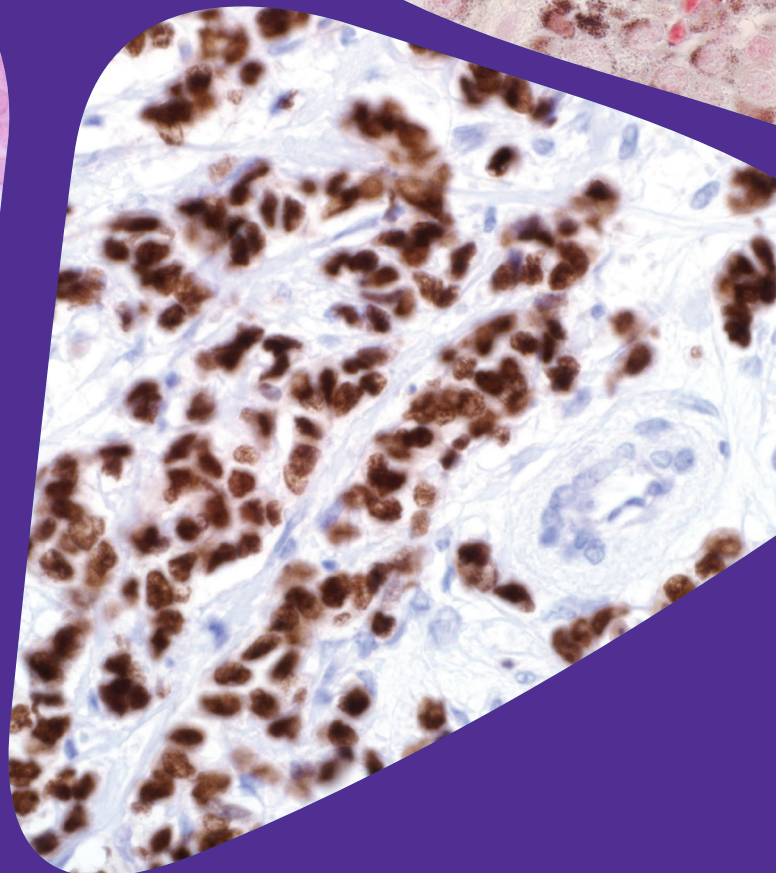
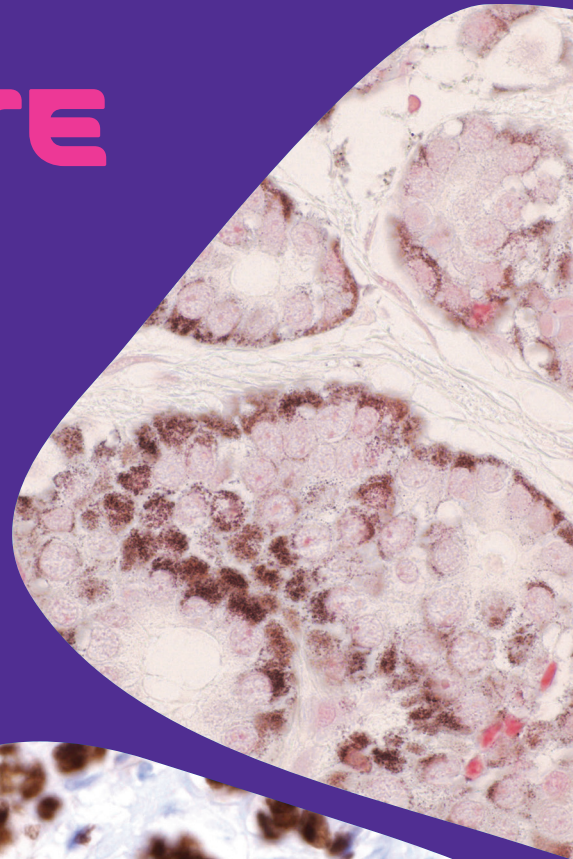
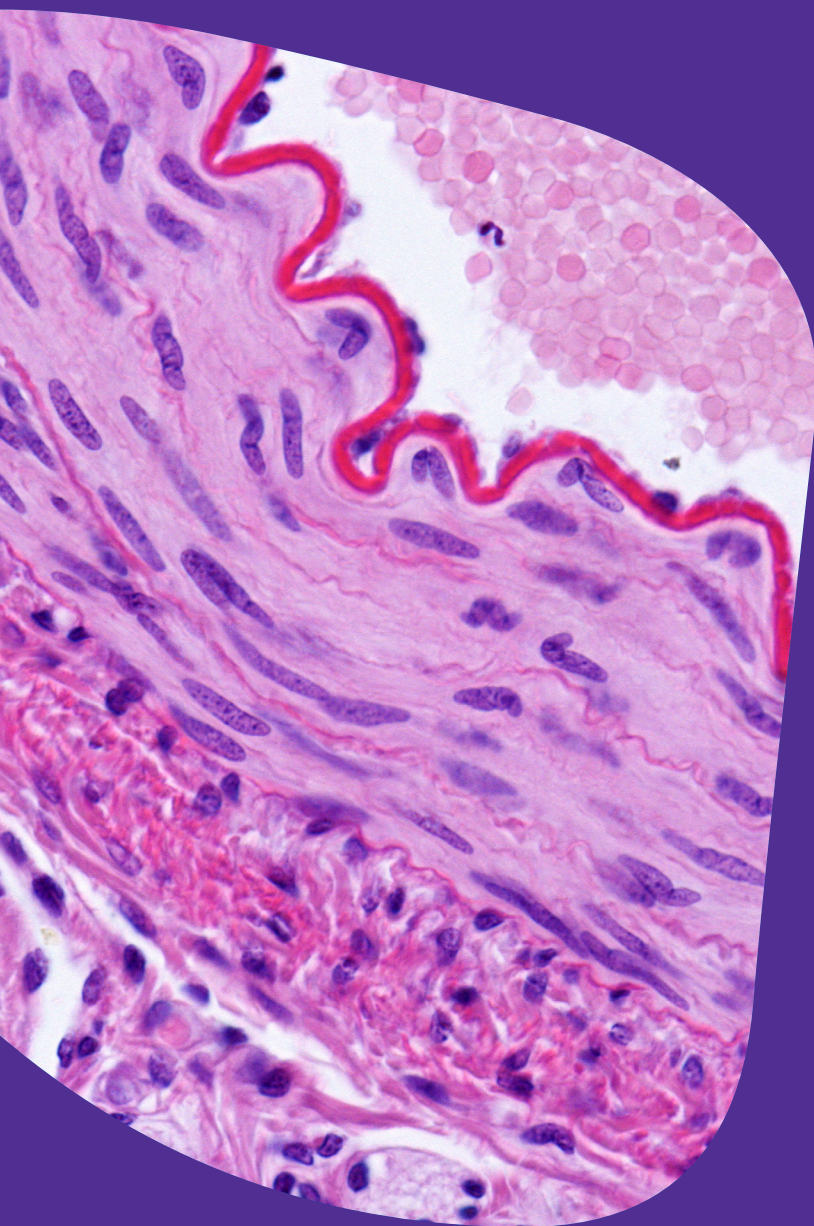


# MAKE EVERY MINUTE COUNT

COMPLETE PATHOLOGY SOLUTIONS



all the  
right tools.

always ready  
for you.

# Discover the next breakthrough — and see the impact you can make on the world.

With our complete pathology solution, you get the right tools, products and superior customer support throughout your entire workflow. Now you can have confidence in the quality of every result and look boldly toward tomorrow.

**With our one-stop pathology solution, there's  
no limit to what you can do:**

find the diagnosis faster, save a life, change the world.



## Sample Collection and Handling

- Dissection Tools
- Ancillary Components (slides, coverslips, etc.)



## Immunohistochemistry

- SNAP i.d.<sup>®</sup> Protein Detection System
- Chromogenic Substrates
- Antigen Retrieval
- Research Use Antibodies
- Cell Marque™ IVD Antibodies



## Fixation and Processing

- Fixatives
- Solvents
- Mounting Media
- Embedding Media



## Water Purification Solutions



## Tissue Staining

- Routine Stains
- Special Stains
- TISSUE-TROL™ Control Slides
- Automated Stainer

Single products used as Fixatives, Tissue processing agents, Mounting Media and Embedding Media and many Stains belong to the group of *In Vitro* Diagnostic (IVD) medical devices. According to US FDA regulation they are classified being Class I, exempt IVD's. Most of them comply with the EU IVD Directive, bearing the CE logo on the label.

Products included in this brochure are not available in all countries.  
Contact your local sales representative or dealer for details.

# Sample Collection and Handling

## Dissection Tools

A selection of dissection instruments with consistent product quality you can trust.

- **Scissors** – Selection of stainless steel Micro-dissection, Mayo and Sharp forms all available with straight or curved blades
- **Scalpels** – Choose the system that suits you best, disposable with plastic handles or disposable stainless steel blades for use with reusable handles.
- **Forceps and Tweezers** – There is a wide variety of point styles and designs including Dumont, hemostatic and mosquito.



Cat. No.	Product Description
Z162507	All-purpose tweezer set, 5 tweezers in a vinyl pouch, pkg of 1 set
F2394	Bayonet forceps, stainless steel
Z675776	DissecTable™ reversible dissecting board polyethylene, pkg of 1 ea
Z265993	Dissecting scissors, Mayo, curved
Z265977	Dissecting scissors, Sharp, straight
F6521	Jewelers forceps, Dumont No. 5
F3767	Micro-dissecting forceps, very fine point
S3146	Micro-dissecting scissors, stainless steel straight, sharp point
S2646	Scalpel blades, No. 10
S2771	Scalpel blades, No. 11
S2896	Scalpel handles, No. 3, stainless steel
Z168866	Scissor-handle forceps, Kelly hemostatic, straight
Z509140	Scissor-handle forceps, straight, Occulating
Z225304	Stainless steel forceps, High-precision
Z168793	Stainless steel forceps, Dissecting
Z168785	Stainless steel forceps, Fine tip, curved
Z168777	Stainless steel forceps, Fine tip, straight
Z680214	Titanium tweezers, Style 2A
T5415	Tweezers, Style #00, sharp, anti-magnetic stainless steel
T5790	Tweezers, Style #4, needle-sharp, anti-magnetic stainless steel
T4662	Tweezers, Style #5, Fine needle-sharp, Inox alloy
T4537	Tweezers, Style #5, Fine needle-sharp, non-magnetic stainless steel
T4412	Tweezers, Style #5, Fine needle-sharp, non-magnetic alloy

Successfully start your pathology research with our one-stop product resources at your side. Now you have even more support to discover the next breakthrough. Find new ways to identify, control and prevent disease—and ultimately, improve patient care.

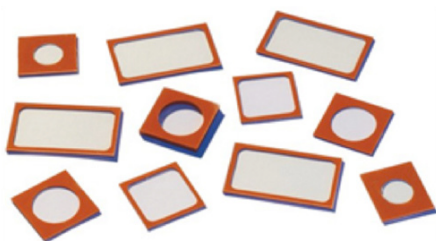
## Collection Vessels

To make sample collection as simple as possible we have a range of plain vessels in a wide variety of volumes and designs. To supplement this we have tamper evident cap options and a selection of specialist vessels prefilled with preservatives.

Cat. No.	Product Description
<b>Z740430</b>	HistoTainer™ II prefilled specimen containers, M961, volume 20 mL
<b>Z740427</b>	HistoTainer™ I prefilled specimen container, tamper evident, volume 60 mL
<b>Z186821</b>	All-purpose sampling containers capacity 4 1/2 oz
<b>Z186848</b>	All-purpose sampling containers capacity 8 oz
<b>Z645346</b>	Bijou sample container plain label
<b>BR61815</b>	BRAND® jar with push-on lid polypropylene, capacity 40 mL
<b>BR61820</b>	BRAND® jar with push-on lid polypropylene, capacity 80 mL
<b>BR61975</b>	BRAND® jar with screw cap, low-density polyethylene, capacity 180 mL
<b>BR62310</b>	BRAND® jar with screw cap polypropylene, capacity 30 mL
<b>BR62315</b>	BRAND® jar with snap-on PE-LD lid polystyrene, capacity 25 mL
<b>Z740379</b>	Eco-Friendly SpecTainer™, tamper evident, biodegradable, size 120 mL, sterile
<b>Z740376</b>	Eco-Friendly SpecTainer™, tamper evident, biodegradable, size 60 mL, non-sterile
<b>BAF175750003</b>	Snap Cap Vials capacity 11 mL
<b>BAF175750040</b>	Snap Cap Vials capacity 148 mL
<b>BAF175750013</b>	Snap Cap Vials capacity 48 mL
<b>Z740422</b>	Tamper proof specimen containers, size 1000 mL
<b>Z740420</b>	Tamper proof specimen containers, size 300 mL
<b>Z740424</b>	Tamper proof specimen containers, size 5700 mL



Discover our complete product listing at [SigmaAldrich.com/histolabware](https://www.sigmaaldrich.com/histolabware)



## Slides/Coverslips

Explore our comprehensive range of simple slides and coverslips along with cavity slides and specialist coatings.

- **Microscope Slides** – 4 sizes, 7 end options, 3 colors and available with cut or ground edges
- **Coverslips** – 9 sizes in 2 thicknesses
- **Specialist Options** – Cell chamber slides, coated slides, stick on chambers for microscope slides are just a few examples

Cat. No.	Product Description
<b>BR475505</b>	BRAND® cavity slides, 76 mm × 26 mm, with 1 concavity
<b>BR470820</b>	BRAND® cover glass, 24 mm × 60 mm
<b>BR474702</b>	BRAND® microscope slide, cut edges, twin frosted end
<b>BR474743</b>	BRAND® microscope slide, ground edges
<b>Z681164</b>	Colored Microscope slides, blue
<b>CLS294775X25</b>	Corning® microscope slides, plain, 75 mm × 25 mm
<b>CLS294775X50</b>	Corning® microscope slides, plain, 75 mm × 50 mm
<b>C9802</b>	Cover glass, 22 mm × 22 mm
<b>C9056</b>	Cover glass, 24 mm × 60 mm
<b>GBL622305</b>	Grace Bio-Labs CoverWell™ perfusion chambers, 8 chambers 9 mm diam.
<b>GBL716022</b>	Grace Bio-Labs HybriSlip™ hybridization cover, 22 mm × 60 mm
<b>GBL666504</b>	Grace Bio-Labs Press-To-Seal silicone isolator, 20 mm diam.
<b>GBL654004</b>	Grace Bio-Labs SecureSeal™ imaging spacer, 1 well, 13 mm diam.
<b>Z688533</b>	Microscope slide-grids, disposable
<b>S8400</b>	Microscope slides, frosted one end, 25 mm × 75 mm
<b>S8902</b>	Microscope slides, plain, 25 mm × 75 mm
<b>C7057</b>	Nunc® Lab-Tek® II Chamber Slide™ system
<b>Z734756</b>	Nunc® Lab-Tek® II chambered coverglass, 4 wells, 1.7 cm <sup>2</sup> /well
<b>Z734853</b>	Nunc® Lab-Tek® II chambered coverglass, 8 wells, 0.7 cm <sup>2</sup> /well

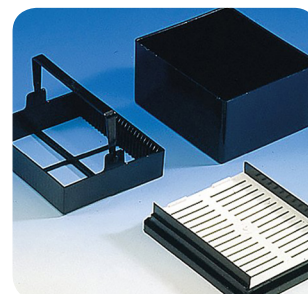
## Staining Labware

We offer a variety of staining dishes and Coplin jars suitable for pathology, microscopy, microbiology and hematology. Dishes, covers and racks are manufactured from PMP, Black POM or soda-lime glass and resist stains from eosin or hematoxylin. Staining dishes are available in many configurations to accommodate up to 50 slides, with various plastic, glass and stainless steel racks.

For immunostaining, we have a selection of staining trays that maintain humidity and reduce evaporation as well as PAP pens to ensure the minimum volume of precious reagent is used on each slide.

We can even help you if you end up staining your hands rather than your samples with a very effective stain remover.

Cat. No.	Product Description
<b>BR472800</b>	BRAND® glass staining trough, Coplin pattern, soda-lime glass
<b>BR472700</b>	BRAND® glass staining trough, Hellendahl extended, soda-lime glass
<b>BR472500</b>	BRAND® glass staining trough, Schiefferdecker pattern, soda-lime glass
<b>BR474400</b>	BRAND® plastic staining trough, Hellendahl pattern, with lid
<b>BR472000</b>	BRAND® staining tray for glass staining trough, soda-lime glass
<b>BR471400</b>	BRAND® staining tray, black, size 76 mm x 26 mm, for 25 slides, POM
<b>BR471500</b>	BRAND® staining trough, black
<b>BR471800</b>	BRAND® staining trough, complete with tray, black, for 25 slides
<b>BR474305</b>	BRAND® transparent plastic staining tray, for 20 slides, use with transparent plastic staining trough
<b>Z675776</b>	DissecTable™ reversible dissecting board polyethylene, pkg of 1 ea
<b>Z151564</b>	Erado-Sol® liquid stain remover
<b>Z358290</b>	Nalgene® staining box, L x W x H 12.5 cm x 12.5 cm x 5 cm
<b>Z377821</b>	PAP pen for immunostaining, 5 mm tip width
<b>S5641</b>	Scienceware® Coplin staining jar with screw cap, high-density polyethylene
<b>Z674664</b>	Slide spinner for slide drying
<b>Z670146</b>	StainTray with black lid
<b>Z670138</b>	StainTray with clear lid
<b>S6141</b>	Wheaton Coplin staining jars, 20 slide staining dishes complete with covers, slide rack and handle
<b>S5516</b>	Wheaton Coplin staining jars, 5 slide jar with ground glass cover
<b>S5891</b>	Wheaton Coplin staining jars, 5 slide jar with plastic screw cap
<b>S6016</b>	Wheaton Coplin staining jars, 8 slide jar with glass cover
<b>Z103969</b>	Wheaton staining dishes includes: dish, rack, and handle
<b>S5017</b>	Wheaton staining dishes, 20 slides, rack only
<b>S4642</b>	Wheaton staining dishes, for 20 slides, dishes only
<b>S4892</b>	Wheaton staining dishes, for 20 slides, dishes with covers only



# Fixation and Processing



## Fixatives

Our fixatives are pre-formulated for direct use on tissue specimens allowing for efficient and safe protocols.

Cat. No.	Product Description
<b>HT101128-4L</b> <b>HT10132-1L</b>	Bouin's solution – Prepared with saturated picric acid, formaldehyde and acetic acid. Excellent fixative for preserving soft and delicate structures. Used as a mordant in various trichrome procedures.
<b>252549-25ML</b> <b>252549-500ML</b> <b>252549-6X500ML</b> <b>252549-1L</b> <b>252549-4L</b> <b>252549-4X100ML</b> <b>252549-100ML</b>	Formaldehyde solution, ACS reagent, 37 wt. % in H <sub>2</sub> O – This product is a solution of approximately 37% by weight of formaldehyde gas in water. The product contains 10–15% methanol as a stabilizer to prevent polymerization.
<b>HT5011-48X15ML</b> <b>HT5012-24X60ML</b> <b>HT5014-24X120ML</b> <b>HT501128-4L</b> <b>HT501320-9.5L</b> <b>HT501640-19L</b>	Formalin solution, neutral buffered, 10% – Case containers are polypropylene with white leak-proof lids and are partially pre-filled with 10% NBF. Case sizes are 48×15 mL, 24×60 mL and 24×120 mL. Popular general purpose histological fixative.
<b>A5472-1GA</b>	Formalin Free Tissue Fixative 🌱 – A less toxic alternative to formalin. Performs well with PCR, <i>in situ</i> hybridization and immunohistological staining.
<b>F5554-4L</b> <b>F5554-19L</b>	Formalin, 10%, Neutral Buffered, Wintergreen Scented – Intended for use as a general purpose histological fixative. Wintergreen oil has been added to the standard formulation to provide a wintergreen scent.
<b>F5304-4L</b>	Formalin, 10%, Neutral Buffered with 0.03% Eosin – Intended for use as general histological fixative. The addition of the eosin to the formulation allows the user to more easily visualize small fragments of tissue during the transfer of the tissue from the fixative to the tissue cassette.
<b>103999</b>	Formaldehyde solution min. 37% free from acid stabilized with about 10% methanol and calcium carbonate for histology, 1L, 2.5L, 25L
<b>65115</b>	HARLECO® Formalin, Carsons. 1:10 dilution of neutral buffered formalin used for tissue fixation in histology. Can be used for tissue specimens in electron microscopy, 20L
<b>H2904-100ML</b> <b>H2904-1L</b>	HistoChoice® Tissue Fixative 🌱 – Designed for the molecular biologist. Specially formulated to preserve antigenic sites for antibody probes and nucleic acid sites for <i>in situ</i> hybridizations. Fixed sections do not require pre-digestion or other recovery procedures to make important sites available.
<b>P6148-500G</b> <b>P6148-1KG</b> <b>P6148-5KG</b>	Paraformaldehyde, reagent grade, crystalline – Recommended for use in the preparation of formalin fixatives for tissues or cells when the samples are to be used in fluorescence studies.
<b>101736</b>	OSTEOMOLL® fixation and decalcification in one step for bone and hard tissue: 1L, 2.5L
<b>100974</b>	Ethanol absolute, for analysis EMSURE® ACS, ISO, Reag. Ph Eur: 1L, 5L
<b>P6744-1GA</b>	Picric acid solution, 1.3% in H <sub>2</sub> O (saturated) – For use as a colorimetric reagent in creatinine determination assay. For use as a general cytoplasmic stain, connective tissue fiber stain, and as a fixative for tissues.
<b>Z2902-3.75L</b>	Zinc Formalin Fixative – Excellent morphological preservation of nuclear and cytoplasmic components. Can replace neutral buffered formalin for routine tissue and immunohistochemical procedures. It is a non-precipitating fixative which can be used with automated and manual methods.



## New Line of Reagent Alcohol (RGA)

MilliporeSigma is proud to introduce a new line of ethanol products. We now offer Tax-free Pure Ethanol and Reagent Alcohol (RGA) in a wide range of packaging options for your histology and pathology applications.

This new line of products is supported by a robust distribution network to ensure expedient delivery and low cost of delivery.

- Range of sizes and prices to suit any budget
- Dense distribution network – low shipping cost
- Not subject to federal excise tax
- Requires letterhead approval from the TTB for volumes greater than 4 liters

### Reagent Alcohol (RGA)

Cat. No.	Product Description
<b>793175</b>	100% (200 proof), pkg sizes: 4x1GA, 5GA, 55GA, 270 GA
<b>793183</b>	95% (190 proof), pkg sizes: 4x1GA, 5GA, 55GA, 270 GA
<b>793213</b>	70% (140 proof), pkg sizes: 4x1GA
<b>752X</b>	HARLECO® Acid Alcohol, 70% (3% HCl), 1L
<b>753X</b>	HARLECO® Acid Alcohol, 95% (5% HCl), 1L

### Pure Ethanol

Cat. No.	Product Description
<b>792799</b>	190 proof, ACS reagent, meets USP testing specifications, pkg sizes: 24x1 PT, 20x1 GA, 120x1 PT, 4x1 GA, 55 GA, 5 GA
<b>792780</b>	200 proof, ACS reagent, meets USP testing specifications, pkg sizes: 24x1PT, 4x1GA, 5GA, 55GA, 120 x 1Pt , 20 x 1 GA

## Alternative Tissue Clearing Agents

### HistoChoice® Clearing Agent

HistoChoice® is a patented, complex mixture of agents that allow tissues to retain their structure, antigenic and nucleic acid binding sites. This formulation is non-citrus, and contains no mercury, formaldehyde or glutaraldehyde.

HistoChoice® Clearing Agent is suitable as an alternative to toluene and xylene for dewaxing paraffin tissue sections. Prepared slides are suitable for antibody probing applications and in situ hybridizations.

#### Features

- Non-toxic and odorless
- Preserves native antigenic and nucleic acid sites
- Tissues retain original structure
- Replaces common fixatives that are often toxic

Cat. No.	Product Description
<b>H2779-1L</b>	HistoChoice® clearing agent



### Xylene Substitute

Non-toxic xylene replacement. Compatible with all tissue processors. May not be compatible with all permanent mounting medias.

Cat. No.	Product Description
<b>A5597-1GAL</b>	Xylene substitute
<b>A5597-4X1GAL</b>	
<b>109843</b>	Neo-Clear® is an aliphatic hydrocarbon clearing agent. A green substitute for xylene: 5L, 4 x 5L, 25L

### Classic Tissue Clearing Agents

Cat. No.	Product Description
<b>534056</b>	Xylenes, histological grade
<b>472476</b>	Chloroform, ACS reagent, ≥99.8%(GC)
<b>179418</b>	Toluene, ACS reagent, ≥99.5%(GC)
<b>M29908</b>	Methyl benzoate, ≥ 99% (GC)
<b>M6752</b>	Methyl salicylate, ≥99% (GC)

Discover our complete product listing at [SigmaAldrich.com/ethanol](https://www.sigmaaldrich.com/ethanol)

## Tissue Processing

Cat. No.	Product Description
<b>101736</b>	OSTEOMOLL® fixation and decalcification in one step for bone and hard tissue: 1L, 2.5L
<b>101728</b>	OSTEOSOFT® Decalcifying solution for sensitive hard material and bone marrow biopsies. Can be used for specimens in immunohistochemistry: 1L, 10L
<b>65039</b>	Mollifex™ Tissue Softener. Softening agent for use with paraffin embedded tissues. Ideal for hard to section blocks and brittle tissues: 500mL

## Mounting and Embedding Labware

Our reagent offering is supported by a wide range of assorted labware to aid in the embedding and mounting your samples.



Cat. No.	Product Description
<b>BR112805</b>	BRAND® forcep with pointed ends PMP, L 115 mm
<b>BR113125</b>	BRAND® forcep with rectangular ends PTFE, L 100 mm
<b>E4140</b>	Embedding molds 19 Flat bullet-shaped unindexed cavities, clear
<b>E4390</b>	Embedding molds 19 Flat bullet-shaped unindexed cavities, maroon
<b>E4015</b>	Embedding molds 26 Flat bullet-shaped cavities double-indexed with numbers and letters, clear
<b>E4265</b>	Embedding molds 26 Flat bullet-shaped cavities double-indexed with numbers and letters, maroon
<b>G2528</b>	Glass strips for thick section (Histology) knives
<b>G2403</b>	Glass strips for thin section (EM) knives
<b>Z648183</b>	Grid coating pen provides a thin layer of adhesive
<b>Z676225</b>	Micro-cutting tool set for microscopy scale applications
<b>Z374415</b>	Scienceware® microscope slide dispenser Holds approximately 72 slides
<b>Z374407</b>	Scienceware® microscope slide holder accepts up to 10 single or double slides standing on end
<b>Z374385</b>	Scienceware® slide box, hinged provides the utmost protection for up to 100 - 1×3 in. slides
<b>Z674664</b>	Slide spinner for slide drying AC input 110 V
<b>Z648191</b>	STATMARK permanent marker for cassette & slide marking
<b>Z648175</b>	Tissue capture pen one pen for two applications
<b>Z672122</b>	Tissue processing/embedding cassettes with lid

Discover our complete product listing at [SigmaAldrich.com/histolabware](https://SigmaAldrich.com/histolabware)

## Mounting Media

We have a range of natural and synthetic mounting media that provide an ideal platform to mount your valuable samples.

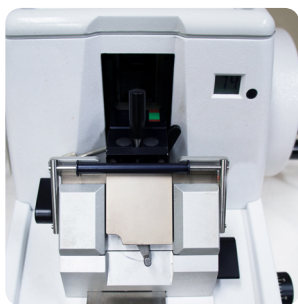
Cat. No.	Product Description
<b>I1161-30ML</b>	ImmunoHistoMount™ - A permanent aqueous mounting medium designed for tissue sections and cell smears with peroxidase and alkaline phosphatase chromogens that cannot be dehydrated with organic solvents.
<b>C1795-25ML</b> <b>C1795-100ML</b>	Canada Balsam - A natural mounting medium obtained from balsam fir trees. The optical properties are nearly identical with those of glass.
<b>C9368-30ML</b>	CC/Mount™ - An aqueous based permanent mounting medium, similar to Crystal Mount™, for the permanent preservation of tissue sections stained with peroxidase and alkaline phosphatase based systems as well as with various fluorescent dyes.
<b>GG1-15ML</b> <b>GG1-10X15ML</b>	Glycerol Gelatin - Aqueous slide mounting media for histological use. Product must be warmed to 55-60 °C before use; at ~37 °C the product returns to semi-solid state.
<b>O8015-30ML</b> <b>O8015-100ML</b>	Organo/Limonene Mount™ 🌱 - This ready-to-use mounting medium is made with limonene, a natural product from orange peels. It is good for coverslipping stained tissues and cell smears that can be dehydrated with organic solvents. This mounting medium is suitable for organic solvent resistant immunohistochemistry (IHC) chromogens as well as an excellent choice for mounting H and E stained slides.
<b>64969</b>	HARLECO® Krystalon™ Mounting Medium: 300mL, 500mL
<b>109016</b>	Neo-Mount™ is a non-aqueous, user-friendly mounting medium designed to work with Neo-Clear® xylene substitute: 100mL, 500mL



## GO GREENER HISTOLOGY & HEMATOLOGY

MilliporeSigma is committed to bringing safer greener alternatives to our customers.





## Embedding Media

Cat. No.	Product Description
<b>EM0100</b>	JB-4 Embedding Kit - JB-4 is a water-soluble, GMA based, plastic resin kit intended for use in the preparation of embedded samples for high resolution light microscopy. Yields 0.5µ-2µ sections
<b>EM0200</b>	Osteo-Bed Bone Embedding Kit - Suitable for use with large and small mineralized (undecalcified) bone sections. Yields clear, hard blocks for cutting sections. Not water- soluble.
<b>O8639</b>	Osteo-Bed Bone Embedding Solvent - For use with Osteo-Bed Bone Embedding Kit. Solvent for removal of plastic from sections prior to rehydration and staining.
<b>P0091</b>	PolyFreeze - Water-soluble support matrix and a form of embedding medium for frozen sectioning.
<b>EM0300</b>	Spurr Low Viscosity Embedding Kit - Low viscosity for exceptional penetration of tissue and other difficult matrices.
<b>SHH0023-6X120ML</b>	PolyFreeze Tissue Freezing Medium - A fast freezing support matrix for frozen tissue sectioning, Green
<b>SHH0024-6X120ML</b>	PolyFreeze Tissue Freezing Medium - A fast freezing support matrix for frozen tissue sectioning, Yellow
<b>SHH0025-6X120ML</b>	PolyFreeze Tissue Freezing Medium - A fast freezing support matrix for frozen tissue sectioning, Blue
<b>SHH0026-6X120ML</b>	PolyFreeze Tissue Freezing Medium - A fast freezing support matrix for frozen tissue sectioning, Clear
<b>P3558-1KG</b>	Paraplast® embedding media - Produces minimal tissue compression and wrinkle-free sections, and cuts to 4 µm thickness with excellent ribbon continuity.
<b>P3683-1KG</b>	Paraplast® Plus embedding media - Regular Paraplast with approx. 0.8% DMSO added for enhanced ease of infiltration and sectioning for tissues difficult to process with regular Paraplast.
<b>P3808-1KG</b>	Paraplast® Xtra embedding media - A unique blend of highly purified paraffin and low M.W. polymers for lower temperature infiltration and better compression resistance.
<b>111609</b>	Histosec® pastilles. Paraffin enriched with polymers: 1kg, 4 x 2.5kg, 25kg
<b>115161</b>	Histosec® pastilles without DMSO. Paraffin enriched with polymers: 4 x 2.5kg, 25 kg

## Engineered Histology Bath Fluid

### 3M™ Novec™ Non-Flammable Bath Fluids

#### Environmentally Friendly and Non-Flammable Bath Fluid

Traditional fluids used for freezing histology samples (including isopentane) are highly flammable and toxic. This has implications for worker safety, operating procedures, building code compliance and liability. Today's laboratories demand a safer alternative without compromising performance. We are pleased to offer 3M™ Novec™ engineered fluids in convenient package sizes to meet your laboratory needs.

- Non-flammable, low toxicity
- High density = reduced frost
- Inert to embedding medium
- Inert to tissue sample
- Less volatile = lower evaporation
- Low global warming potential (GWP)
- Low odor

Cat. No.	Product Description
<b>SHH0001</b>	Description: 3M™ Novec™ 7000 Engineered Fluid, 1-methoxyheptafluoropropane, is a non-flammable, low global warming potential (GWP) heat transfer fluid capable of reaching -120°C. It is also useful as a direct expansion refrigerant
<b>SHH0002</b>	3M™ Novec™ 7100 Engineered Fluid, methoxy-nonafluorobutane (C4F9OCH3), is a clear, colorless and low-odor fluid intended to replace ozone-depleting substances (ODSs) and compounds with high global warming potential (GWP) in many applications

# Routine

# Tissue Staining

## Differential/Counter Stains

The combination of the nuclear stain hematoxylin and the plasma counterstain eosin Y is the most useful stain in the field of histotechnology. Various formulations of hematoxylin and eosin, prepared with dyes certified by the Biological Stain Commission, are supplied as ready-to-use solutions. Dyes, chemicals and general-purpose laboratory reagents are also available for customers wishing to prepare their own staining solutions. The histology product line includes reagents for *in vitro* diagnostic use for clinical laboratories.

### Eosins

General purpose cytoplasmic stain highlighting in pink to red. Eosin Y stains protein in the cytoplasm due to its cell membrane permeability and attraction of the negatively charged dye to positively charge amino acid residues of proteins in the cytoplasm and in collagen and muscle fibers. Available in aqueous and alcoholic formulations.

Cat. No.	Product Description
<b>HT110116-500ML</b> <b>HT110132-1L</b> <b>HT110180-2.5L</b> <b>HT1101128-4L</b>	Eosin Y solution, alcoholic – Certified Eosin Y, 0.5% (w/v) in acidified 90% ethanol
<b>HT110316-500ML</b> <b>HT110332-1L</b> <b>HT110380-2.5L</b> <b>HT1103128-4L</b>	Eosin Y solution, alcoholic, with phloxine – Certified Eosin Y, 0.1% (w/v) and certified phloxine B, 0.1% (w/v) in acidified ethanol
<b>HT110216-500ML</b> <b>HT110232-1L</b> <b>HT110280-2.5L</b> <b>HT1102128-4L</b>	Eosin Y solution, aqueous – Certified Eosin Y, 0.5% (w/v) in water, not acidified
<b>586X</b>	HARLECO® Eosin Y Solution, Alcoholic Saturated: 1L
<b>588X</b>	HARLECO® Eosin Y Solution, Aqueous, 1% PDC: 1L, 10L

### Hematoxylin

General purpose nuclear stain highlighting in dark blue to violet. Hematoxylin stains oligonucleotides in the nucleus due to its attraction and binding to the negatively charged oligonucleotide phosphate backbone.

Cat. No.	Product Description	Cat. No.	Product Description
<b>GHS116-500ML</b> <b>GHS132-1L</b> <b>GHS1128-4L</b>	Hematoxylin Solution, Gill No. 1 – Used as a progressive cytology stain, used with hematoxylin and eosin staining, 2 g/L certified hematoxylin	<b>MHS1-100ML</b> <b>MHS16-500ML</b> <b>MHS32-1L</b> <b>MHS80-2.5L</b> <b>MHS128-4L</b>	Hematoxylin Solution, Mayer's – General purpose, progressive type, used as a counterstain for procedures such as immunohistochemistry or laser microdissection, 1 g/L certified hematoxylin
<b>GHS216-500ML</b> <b>GHS232-1L</b> <b>GHS280-2.5L</b> <b>GHS2128-4L</b>	Hematoxylin Solution, Gill No. 2 – May be used for cytology and/or histology as a progressive or regressive stain depending on length of staining time, 4 g/L certified hematoxylin	<b>109249</b>	Mayer's Hemalum solution: 500mL, 1L, 2.5L
<b>GHS316-500ML</b> <b>GHS332-1L</b> <b>GHS380-2.5L</b> <b>GHS3128-4L</b>	Hematoxylin Solution, Gill No. 3 – May be used for cytology and/or histology as a progressive or regressive stain depending on length of staining time, 6 g/L certified hematoxylin	<b>HT1079-1SET</b>	Weigert's iron hematoxylin solution, set – Recommended in lengthy or acidic stain procedures, resists discoloration, 1% hematoxylin in ethanol and Ferric chloride in dilute HCl
<b>105174</b>	Hematoxylin solution modified acc. to Gill III; 500mL, 1L, 2.5L	<b>S5134-6X100ML</b>	Scott's Tap Water Substitute Concentrate, 10x – Used as a "blueing reagent" in hematoxylin and eosin staining procedures, MgSO <sub>4</sub> • 7H <sub>2</sub> O, 200 g/L + NaHCO <sub>3</sub> , 20 g/L
<b>HHS16-500ML</b> <b>HHS32-1L</b> <b>HHS80-2.5L</b> <b>HHS128-4L</b>	Hematoxylin Solution, Harris Modified – General purpose, regressive type, 7 g/L certified hematoxylin	<b>A3179-1L</b> <b>A3429-4L</b>	Differentiation Solution – Acidified alcohol solution for the differentiation of regressive hematoxylin stains, Acid Alcohol

# Special Stains

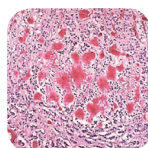
## Special Staining Kits

Special stains are used to identify suspected pathogens or demonstrate specific cellular components that aid pathologists in the evaluation of disease states. We offer the most commonly utilized special stain products, with individual reagents available as prepared solutions or in convenient kit form. For customers wishing to prepare their own staining solutions we offer stains and dyes, as well as other chemicals and general purpose laboratory reagents required.

### Amyloid Stain, Congo Red Kit

**Cat. No.: HT60-1KT**

Amyloid protein is detected in tissue with Congo red, a metachromatic stain. Staining is intensified by pretreatment of tissue with alkaline sodium chloride.



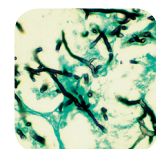
#### Components:

- Congo red solution (kit only), 500 mL
- Sodium chloride solution, alcoholic (kit only), 500 mL
- Sodium hydroxide solution (kit only), 2 × 12 mL

### Silver Stain (Modified GMS) Kit

**Cat. No.: HT100A-1KT**

Silver stain is an aid in distinguishing fungi, basement membrane and opportunistic organisms such as *Pneumocystis carinii* in tissue sections or smears.



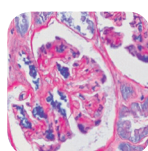
#### Components:

- Borax solution, 100 mL
- Gold chloride solution, 100 mL
- Periodic acid solution, 100 mL
- Silver methenamine reagent, 12 vials
- Sodium thiosulfate solution, 100 mL

### Periodic Acid-Schiff Kit (PAS)

**Cat. No.: 395B-1KT**

Staining patterns of lymphocytes are helpful in making therapeutic decisions in established cases of lymphocytic leukemia. Cellular elements which may be demonstrated with the PAS procedure include glycogen, fungal walls, basement membrane, certain epithelial sulfomucins and sialomucins, neutral mucosubstances, colloid material of the thyroid and the pars intermedia of the pituitary.



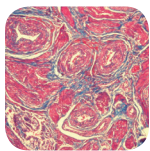
#### Components:

- Hematoxylin solution, Gill No. 3 (kit only), 100 mL
- Periodic acid solution (395-1), 2 × 100 mL
- Schiff's reagent (kit only), 4 × 50 mL

## Trichrome Stain (Masson) Kit

**Cat. No.: HT15-1KT**

Collagen and muscle fiber stain differentially when treated sequentially with Biebrich scarlet-acid fuchsin, PTA/PMA and aniline blue. Cytoplasm and muscle fibers stain red whereas collagen displays blue coloration.



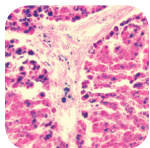
### Components:

- Aniline blue solution (kit only), 250 mL
- Biebrich scarlet-acid fuchsin solution (HT15-1), 250 mL
- Phosphomolybdic acid solution (HT15-3), 250 mL
- PPhosphotungstic acid solution (HT15-2), 250 mL

## Iron Stain Kit

**Cat. No.: HT20-1KT**

Deposits of loosely bound iron in erythrocytes, bone marrow, or tissue stain an intense blue when treated with acid ferrocyanide; according to the well-known Prussian blue reaction.



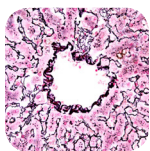
### Components:

- Hydrochloric acid solution, 250 mL
- Potassium ferrocyanide solution, 250 mL
- Pararosaniline solution, 30 mL

## Reticulum Stain Kit

**Cat. No.: HT102A-1KT**

Intended to demonstrate reticular fibers in paraffin sections. Useful in the differential diagnosis of certain type of tumors such as carcinomas, sarcomas, and lymphosarcomas.



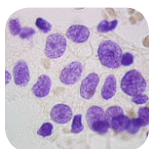
### Components:

- Ferric ammonium sulfate solution, 500 mL
- Gold chloride solution, 100 mL
- Oxalic acid solution, 100 mL
- Potassium permanganate solution, 100 mL
- Silver nitrate solution, 50 mL
- Sodium hydroxide solution, 100 mL
- Sodium thiosulfate solution, 500 mL

## DNA staining acc. to Feulgen Kit for quantitative determination of DNA

**Cat. No.: 107907**

The standardized Feulgen reaction is the method of choice for determining DNA in histological and cytological specimens. The significance of DNA content in diagnosis and prognosis in undifferentiated tumors is highly recognized.



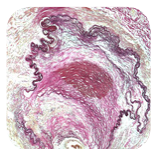
### Components:

- 5 M Hydrochloric acid, 2 x 250 mL
- Schiff's reagent, 2 x 250 mL
- Sodium metabisulite concentrate, 250 mL

## Elastica van Gieson's Kit for detection of elastic fibers

**Cat. No.: 115974**

Brilliant results are achieved for the visualization of fibers using resorcin-fuchsin solution according to Weigert's in association with van Gieson's picrofuchsin solution and nuclear staining with Weigert's iron hematoxylin solution.



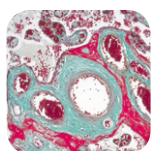
### Components:

- Weigert's solution A – Alcoholic hematoxylin solution, 500 mL
- Weigert's solution B – Hydrochloric acid iron(III)nitrate solution, 500 mL
- Elastin acc. to Weigert's resorcin fuchsin solution, 500 mL
- Picrofuchsin solution acc. to van Gieson

## Masson-Goldner Kit for visualizing connective tissue

**Cat. No.: 100485**

This "Masson-Goldner staining kit - for the visualization of connective tissue with trichromic staining" is used for human-medical cell diagnosis and serves the purpose of the histological investigation of sample material of human origin.



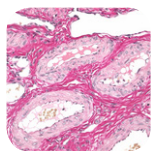
### Components:

- Azophloxine solution, 500 mL
- Tungstophosphoric acid orange G solution, 500 mL
- Light green SF solution, 500 mL
- Acetic acid 10%, 500 mL

## Weigert's iron hematoxylin kit

**Cat. No.: 115973**

Following nuclear staining with Weigert's iron hematoxylin, components such as muscle, cytoplasm and erythrocytes are stained with azophloxin and Orange G solution. Connective tissue is then counterstained with Light green SF solution.

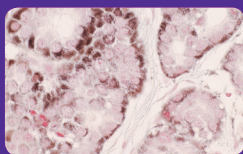


### Components:

- Azophloxine solution, 500 mL
- Tungstophosphoric acid Orange G solution, 500 mL
- Light green SF solution, 500 mL
- Acetic acid 10%, 500 mL

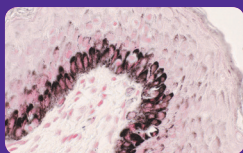
**NEW**

## Fontana-Masson Stain Kit



**Cat. No.: HT200-1KT**

Fontana-Masson staining is used for the demonstration of argentaaffin substances such as melanin, argentaaffin granules of carcinoid tumors and some neurosecretory granules. The 30X faster microwave procedure reduces incubation time: melanin stain time is reduced to 1 minute, argentaaffin stain time is reduced to 2 minutes.



### Components:

- Silver Nitrate Solution, 50 mL
- Gold Chloride Solution, 125 mL
- Sodium Thiosulfate Solution, 125 mL

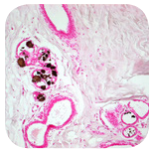
**30x Faster!**



## Silver Plating Kit acc. to von Kossa Kit for the detection of calcium deposits

**Cat. No.: 100362**

This "Silver plating kit acc. to von Kossa - for detection of microcalcification" is used for human-medical cell diagnosis and serves the purpose of the histological investigation of sample material of human origin.



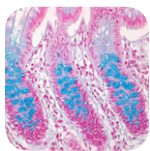
### Components:

- Staining kit contains, 2 x 100-ml bottles
- Silver nitrate solution, 100 mL
- Sodium thiosulfate solution, 100 mL

## Nuclear fast red-aluminum sulfate solution 0.1 %

**Cat. No.: 100121**

Silver plating methods are highly specific. They are used to visualize fine structures such as microcalcification. Silver ions of the silver nitrate solution react with the carbonate and phosphate ions of the calcium and displace the calcium ions.



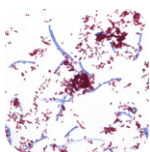
### Components:

- Silver nitrate solution, 100 mL
- Sodium thiosulfate solution, 100 mL

## Tb-color modified Kit for hot staining acid-fast bacteria

**Cat. No.: 100497**

Due to the high proportion of wax and lipids in the cell wall, mycobacteria absorb dyes "only very" slowly. To accelerate the uptake of fuchsin dye the carbolfuchsin solution applied to the specimen is normally heated until vapors evolve. The mycobacteria are thus referred to as being acid- and alcohol-fast in staining operations, and show up red on the microscope slide.



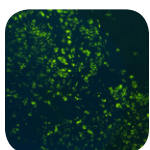
### Components:

- Tb-color modified carbol-fuchsin solution, 500 mL
- Tb-color modified hydrochloric acid in ethanol, 2 x 500 mL
- Tb-color modified methylene blue solution, 500 mL

## TB-fluor Kit for fluorescence staining acid-fast bacteria

**Cat. No.: 109093**

Fluorescence staining allows acid-fast rods to be easily identified even when their numbers are small. Depending on the filter, choose between two fluorescent dyes: Rhodamine B – red and Auramine O – yellowgreen. Potassium permanganate solution turns the background uniformly black in order to suppress troublesome intrinsic fluorescence of the specimen.



### Components:

- Auramine-Rhodamine solution, 500 mL
- Decolorisation solution, 3 x 500 mL
- Counterstaining solution (KMnO<sub>4</sub>), 2 x 500 mL

## TISSUE-TROL™ Control Slides

Histology control slides are essential for formal quality assurance programs. Our slides are composed of paraffin-embedded tissue sections containing known characteristics and are used for monitoring staining performance in pathology laboratories.

Cat. No.	Product Description
<b>TTR001</b>	Acid Fast TISSUE-TROL™ Control Slides from mouse lung tissue containing <i>Mycobacterium gordonae</i>
<b>TTR002</b>	Amyloid TISSUE-TROL™ Control Slides from Human heart tissue containing intracellular amyloid
<b>TTR013</b>	Argentaffin TISSUE-TROL™ Control Slides from human intestine tissue containing argentaffin granules
<b>TTR003</b>	Elastic TISSUE-TROL™ Control Slides from human skin containing elastic fibers
<b>TTR004</b>	Fungi TISSUE-TROL™ Control Slides from mouse lung containing <i>Candida albicans</i>
<b>TTR005</b>	Gram Stain TISSUE-TROL™ Control Slides from mouse lung tissue containing <i>Staphylococcus aureus</i> and <i>Escherichia coli</i>
<b>TTR006</b>	Helicobacter TISSUE-TROL™ Control Slides from mouse intestine tissue containing <i>Helicobacter pylori</i>
<b>TTR007</b>	Iron TISSUE-TROL™ Control Slides from human liver containing intracellular and extracellular iron
<b>TTR014</b>	Melanin TISSUE-TROL™ Control Slides from human skin
<b>TTR008</b>	Mucin TISSUE-TROL™ Control Slides from human intestine tissue containing mucins
<b>TTR009</b>	PAS TISSUE-TROL™ Control Slides from human kidney
<b>TTR010</b>	Reticulum TISSUE-TROL™ Control Slides
<b>TTR011</b>	Spirochetes TISSUE-TROL™ Control Slides from rabbit testicle tissue containing spirochetes ( <i>Treponema pallidum</i> )
<b>TTR012</b>	Trichrome TISSUE-TROL™ Control slides from human liver



## Midas® III-Plus: The Cornerstone of Your Laboratory

The Midas® III-Plus Automated Stainer is a fully automated, benchtop stainer with a small footprint. It is designed to perform routine hematology and microbiology staining effortlessly. It utilizes the dip slide staining technique which ensures uniform staining for every sample. This reduces stain consumption up to 50%.

This versatile automated stainer combines reliable electronics and mechanics, now with a new optional plastic hood enclosure to make your laboratory a safer environment. Ideally suited for staining up to 300 slides per day, this stainer will become the new workhorse of your hematology/bacteriology lab.

Discover how you can get quality staining every time:

[www.emdmillipore.com](http://www.emdmillipore.com)

Cat. No.	Product	Size	Package
<b>64000H-94</b>	Midas® III-Plus Slide Stainer	1EA	Chipboard Box
<b>Additional Accessories</b>			
<b>64052-94</b>	Midas® Slide Carrier 30 slides	1EA	Chipboard Box
<b>64054W-95</b>	Midas® Vessels and Lids White 8/pk	1EA	Chipboard Box
<b>64000WB-94</b>	Midas® Water Bath	1EA	Chipboard Box
<b>64000WBF-95</b>	Midas® Water Bath Filters 2/pk	1EA	Chipboard Box

# Immunohistochemistry



## SNAP i.d.® 2.0 Protein Detection System

SNAP i.d.® 2.0 Protein Detection System for Immunohistochemistry (IHC) introduces a new capability to the innovative, vacuum-driven SNAP i.d.® 2.0 system. The IHC frame and slide holders allow you to block, probe and stain up to 12 tissue slides per frame. Reduced handling time and multiple-slide processing make this system ideal for antibody and protocol standardization.

### Key Benefits

- Eliminates the need for pap pens
- Antibodies can be collected and reused
- Slide handling time is significantly decreased
- Less time spent on wash steps
- Parallel processing of multiple slides
- Efficient, vacuum-driven slide washing saves time and can reduce background

### Base System

The SNAP i.d.® systems for IHC contain everything you need to get started, including the detection base, IHC frame and incubation cover, slide holders, an assembly fixture, vacuum tubing and a Quick Start User Guide.

Cat. No.	Product Description
<b>SNAP2IHC</b>	SNAP i.d.® 2.0 Protein Detection System - 1 IHC Frame (up to 12 slides)
<b>SNAP2IHC2</b>	SNAP i.d.® 2.0 Protein Detection System - 2 IHC Frames (up to 24 slides)

### SNAP i.d.® 2.0 consumables

Cat. No.	Product Description
<b>SNAP2FRIHC</b>	SNAP i.d.® 2.0 IHC Frame
<b>SNAP2SH</b>	SNAP i.d.® 2.0 IHC Slide Holders 24/pk

## Chromogenic Substrates

Chromogenic substrates and enhancers are used to localize and increase the staining intensity of tissue specimens stained using immunohistochemistry. Typically the enzymes horseradish peroxidase (HRP) and alkaline phosphatase (AP) are used in conjunction with the appropriate chromogen/substrate to produce a reaction product that is then visualized using light microscopy.

Cat. No.	Product Description
<b>D0426</b>	SIGMAFAST™ DAB with Metal Enhancer – SIGMAFAST™ DAB (3,3'-Diaminobenzidine tetrahydrochloride) with Metal Enhancer Tablets have been developed for use in immunohistology as a precipitating substrate for the localization of peroxidase activity. The DAB reaction is enhanced by the addition of CoCl <sub>2</sub> and produces a more intense stain which is resistant to alcohol.
<b>D3939</b>	3,3'-Diaminobenzidine (DAB) Enhanced Liquid Substrate System tetrahydrochloride – The DAB (3,3'-Diaminobenzidine tetrahydrochloride) Two-component Enhanced Liquid Substrate System is a precipitating substrate system for peroxidase. DAB Two-component Liquid Substrate System produces a brown precipitate for use in immunohistological and immunoblotting staining procedures.
<b>AEC101</b>	AEC Staining Kit – The AEC (3-Amino-9-ethylcarbazole) Staining Kit contains universal reagents for staining peroxidase labeled compounds in immunohistochemistry and immunoblotting techniques. AEC produces an insoluble end product that is red in color.
<b>F4648</b> <b>F4523</b>	SIGMAFAST™ Fast Red TR/Naphthol AS-MX Tablets – Developed for use as a precipitating substrate for the detection of alkaline phosphatase activity in immunohistology. Contains 0.6 mM levamisole to block endogenous alkaline phosphatase activity.
<b>R3783</b>	PermaRed/AP Kit – PermaRed/AP is a chromogenic substrate which produces a strong red color and is used for immunohistochemical (IHC) or <i>in situ</i> hybridization (ISH) detection of secondary antibodies conjugated to alkaline phosphatase (AP). After the enzymatic reaction is completed, the resulting dye is insoluble in organic solvents including alcohol and xylene, which allows tissue sections stained with PermaRed/AP to be dehydrated, cleared and mounted after staining.
<b>SRE0079-50G</b> <b>SRE0079-250G</b>	3,3'-Diaminobenzidine tetrahydrochloride hydrate C <sub>12</sub> H <sub>14</sub> N <sub>4</sub> · 4HCl · xH <sub>2</sub> O – Elite quality level DAB produces a brown precipitate when oxidized by peroxidase. Used in immunohistological and immunoblotting staining procedures.

# Ancillary Reagents

Cat. No.	Qty.	Product Description
<b>938B-03</b>	50 mL predilute	Diamond: Antibody Diluent is a buffered solution for the dilution of both polyclonal and monoclonal antibodies as well as for the preparation of negative control reagents in IHC. It is designed to minimize the non-specific reaction that may be caused by the antibody and encourage specific antigen-antibody binding. Diamond: Antibody Diluent can also be used to stabilize diluted antibodies when stored at 2-8°C.
<b>938B-05</b>	200 mL predilute	
<b>935B-06</b>	200 mL concentrate	Tris Buffered Immunohistochemistry Wash Buffer + Tween® 20 is a 20X concentrated solution that is employed to rinse reagents off slides and to provide a medium for short-term storage of immunohistochemistry specimens in between application of reagents. When diluted, the ready to use solution is a 50mM Tris buffered solution with a pH range of 7.6±0.1.
<b>935B-09</b>	1000 mL concentrate	
<b>954D-20</b>	50 mL each predilute amplifier and polymer detector	The HiDef Detection™ Polymer System is a visualization system that is ready-to-use in immunohistochemical protocols. This two-step system uses an indirect method resulting in an antibody-enzyme complex that universally detects mouse and rabbit primary antibodies.
<b>954D-30</b>	100 mL each predilute amplifier and polymer detector	
<b>957D-50</b>	150 tests	DAB Substrate Kit is intended for use in immunohistochemistry (IHC) staining protocols. This reagent is designed to detect target antigens in formalin-fixed, paraffin-embedded tissue sections when used in conjunction with primary antibodies and appropriate secondary antibody conjugates in the IHC staining process.
<b>957D-20</b>	500 tests	
<b>957D-60</b>	1000 tests	
<b>957D-30</b>	2000 tests	When in the presence of HRP polymer, DAB produces a brown precipitate that can be readily visualized using light microscopy.
<b>957D-40</b>	5000 tests	

## Antigen Retrieval

Due to the cross-linking chemistry used in fixation it is often necessary to pre-treat a fixed tissue sample prior to immunostaining to make target epitopes accessible. We offer enzymes and buffers to accommodate both enzymatic and HIER (Heat Induced Epitope Retrieval) methods of antigen retrieval.

Cat. No.	Product Description
<b>SRE0063</b>	<b>New</b> – Tris-EDTA Buffer pH 9.0, Ready-to-use, Antigen Retriever, IVD – For use in Diagnostic applications for the heat induced epitope (or antigen) retrieval (HIER) of formalin-fixed, paraffin-embedded (FFPE) tissues prior to immunohistochemical (IHC) staining.
<b>C9999</b>	Citrate Buffer, pH 6.0, 10×, Antigen Retriever – Used as a heat-induced antigen retriever on formalin-fixed paraffin-embedded (FFPE) tissue sections prior to application of antibodies.
<b>E1161</b>	EDTA Buffer, pH 8.5, 10×, Antigen Retriever – Used as a heat-induced antigen retriever on formalin-fixed paraffin-embedded (FFPE) tissue sections prior to application of antibodies.
<b>T6455</b>	Tris-HCl Buffer, pH 10, 10×, Antigen Retriever – Used as a heat-induced antigen retriever on formalin-fixed paraffin-embedded (FFPE) tissue sections prior to application of antibodies.
<b>H3292</b>	Histo/Zyme, pH 7.2, Ready-to-use, Antigen Retriever – Histo/Zyme is a stabilized proteolytic enzyme in buffered solution, used to unmask immunoreactive sites altered by fixation and/or the embedding process. Treatment with a proteolytic enzyme in immunohistochemistry (IHC) is required to digest excess linkages and expose the antigen. The use of Histo/Zyme results in superior staining over traditionally used enzyme pretreatments, such as pepsin and trypsin. Moreover, Histo/Zyme requires only a brief incubation at room temperature. Performing antigen recovery with Histo/Zyme will allow you to dilute the primary antibody 5 to 10 fold further and achieve optimal staining.
<b>R2283</b>	Pepsin – Used for proteolytic digestion of formalin-fixed paraffin-embedded (FFPE) tissue sections prior to application of antibodies.
<b>920P</b>	Trilogy™ IHC Pretreatment Solution. Combines 3 pretreatment steps: deparaffinization, rehydration, and unmasking

### Featured Product

#### Trilogy™ – 3 Steps in 1

Trilogy™ is a product that combines the three pretreatment steps: deparaffinization, rehydration, and unmasking in immunohistochemistry stains. This product is completely biodegradable and non-toxic.

Trilogy™ may be used whenever immunohistochemistry staining is performed on formalin-fixed paraffin-embedded tissue sections. Using this product encourages standardization of the pretreatment procedure, thereby producing more consistent, more reliable results.



# Research Antibodies

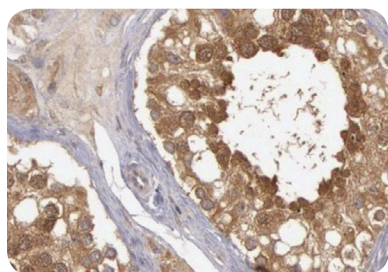
Analyzing protein expression in cells is imperative to understanding the cause and prevention of human diseases. Our comprehensive portfolio contains over 90,000 highly characterized primary antibodies plus nearly 2,500 secondary antibodies and conjugates. Over 37,000 of these antibodies have been validated for use in IHC applications. Our antibody offering is supported by scientific research—with more than 10,000 peer-reviewed citations per year—and our Antibody Guarantee, giving you confidence that we can support and drive your research from start to finish.

For Research Use Only. Not for use in diagnostic procedures.

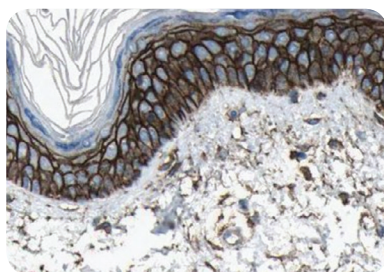
## Prestige Antibodies®

Our catalog of over 20,000 Prestige Antibodies® provides industry-leading depth of characterization. These exceptional antibodies were developed based on the goal of the Human Protein Atlas project to map the entire human tissue proteome via IHC staining. Each antibody is supported by over 500 IHC, IF, and/or Western blot images and all supporting data is publicly available on the HPA website. Thus, you can review countless images from a wide range of tissues to enable you to make confident purchasing decisions.

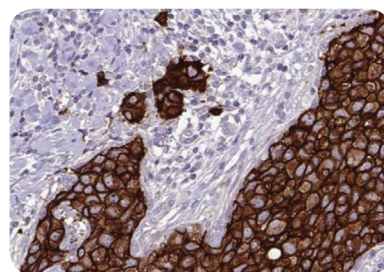
Cat. No.	Product Description
<b>HPA005785</b>	Anti-CD44 antibody produced in rabbit
<b>HPA003259</b>	Anti-MITF antibody produced in rabbit
<b>HPA001328</b>	Anti-BRAF antibody produced in rabbit
<b>HPA003456</b>	Anti-ZEB2 antibody produced in rabbit
<b>HPA008405</b>	Anti-COL1A1 antibody produced in rabbit
<b>HPA042785</b>	Anti-CSPG4 antibody produced in rabbit
<b>HPA018530</b>	Anti-EGFR antibody produced in rabbit
<b>HPA001762</b>	Anti-VIM antibody produced in rabbit
<b>HPA001238</b>	Anti-MMP9 antibody produced in rabbit
<b>AMAB90627</b>	Monoclonal Anti-HER2 antibody produced in mouse



Anti-CD44 (Product No. HPA005785): Immunohistochemical staining of human esophagus shows strong cytoplasmic and membranous positivity in squamous epithelial



Anti-BRAF (Product No. HPA001328) Immunohistochemical staining of human testis shows moderate cytoplasmic positivity in cells in seminiferous ducts.



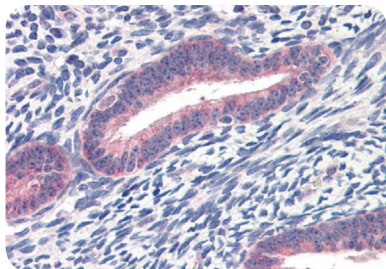
Monoclonal Anti-HER2 (Product No. AMAB90627) Immunohistochemical staining of human HER2-positive breast cancer shows strong membranous positivity in tumor cells.

Discover more at

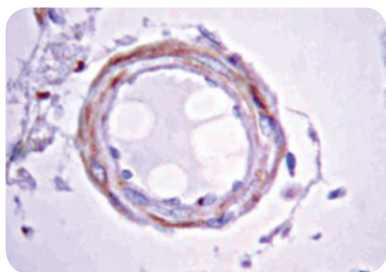
[SigmaAldrich.com/antibodies](https://www.sigmaaldrich.com/antibodies)

## Cancer Research Antibodies

Recognizing both the tremendous opportunities and the challenges facing cancer researchers, we are dedicated to developing and refining tools and technologies for your study of cancer. We provide a comprehensive portfolio of cancer research antibodies extensively characterized and validated to support your application needs.



Anti-TWIST1 (Product No. SAB2108515): Immunohistochemistry of TWIST1 in Uterus tissue with TWIST1 antibody at 4-8 µg/mL.



Amyloid (β-A4-protein, PN: MAB348) staining on Alzheimer's Disease-Hypothalamus. Tissue pretreated with Citrate, pH 6.0. The antibody was diluted to 1:80, using IHC-Select® Detection with HRP-DAB. Immunoreactivity is seen as cerebral vascular amyloid deposition in the walls of blood vessels.

Cat. No.	Product Description
<b>Signalling</b>	
<b>SAB4504331</b>	Anti-phospho-Akt (pSer473) antibody
<b>MAB5352</b>	Anti-Notch 1 Antibody, clone mN1A
<b>05-361</b>	Anti-NFκB p52 Antibody
<b>P4235</b>	Anti-p53 antibody
<b>05-516</b>	Anti-Ras Antibody, clone RAS10
<b>WH0003845M1</b>	Monoclonal Anti-KRAS antibody
<b>Growth Factors</b>	
<b>E2760</b>	Monoclonal Anti-Epidermal Growth Factor Receptor antibody
<b>E3138</b>	Monoclonal Anti-Epidermal Growth Factor Receptor
<b>V4262</b>	Monoclonal Anti-Vascular Endothelial Growth Factor Receptor-1 antibody
<b>V4758</b>	Monoclonal Anti-Vascular Endothelial Growth Factor antibody
<b>F6162</b>	Anti-Fibroblast Growth Factor-Basic antibody
<b>F5421</b>	Anti-Fibroblast Growth Factor Receptor-1 antibody
<b>Cell Death</b>	
<b>HPA045168</b>	Anti-PARP1 antibody
<b>A2856</b>	Anti-ATG7 antibody
<b>C8487</b>	Anti-Caspase 3, Active antibody
<b>C1354</b>	Monoclonal Anti-Caspase 11 antibody
<b>A8604</b>	Monoclonal Anti-Annexin V antibody
<b>Metabolism/Oxidative Stress</b>	
<b>T2949</b>	Anti-mTOR antibody
<b>U6382</b>	Anti-UCP-1 Antibody
<b>SAB4500003</b>	Anti-BCL-2 antibody
<b>G7781</b>	Anti-Glutathione-S-Transferase (GST) antibody
<b>S2147</b>	Monoclonal Anti-Superoxide Dismutase (SOD) antibody

## Neurodegenerative Pathology

The progressive loss of neuronal function can lead to serious debilitating diseases (e.g. Alzheimer's) and cause premature death. Count on our comprehensive portfolio of neurodegenerative antibodies so you can better explore and understand the mechanisms of neurological diseases.

Cat. No.	Product Description
<b>Neuronal Cell Structure</b>	
<b>MAB377</b>	Anti-NeuN Antibody, clone A60
<b>T8578</b>	Monoclonal Anti-β-Tubulin III (neuronal) antibody
<b>MAB3420</b>	Anti-Tau-1 Antibody, clone PC1C6
<b>Neuronal Function</b>	
<b>AB152</b>	Anti-Tyrosine Hydroxylase Antibody
<b>AB144P</b>	Anti-Choline Acetyltransferase Antibody
<b>MAB5406</b>	Anti-GAD67 Antibody, clone 1G10.2
<b>Neuronal Development</b>	
<b>AB9610</b>	Anti-Olig-2 Antibody
<b>ABD69</b>	Anti-Nestin, Human Antibody
<b>AB1554</b>	Anti-Nerve Growth Factor Receptor Antibody, p75
<b>Neural Degeneration</b>	
<b>AB5320</b>	Anti-NG2 Chondroitin Sulfate Proteoglycan Antibody
<b>AB5078P</b>	Anti-Beta-Amyloid 1-42 Antibody
<b>AB5038</b>	Anti-Synuclein α Antibody



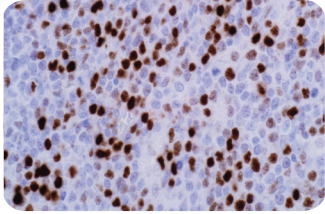
## Cell Marque™ IVD

Cell Marque™ IVD primary antibodies form a comprehensive portfolio of both novel and routine antibodies. Our team of experts includes medical professionals, which allows us to deliver the highest quality reagents and vast technical expertise to the IVD market.

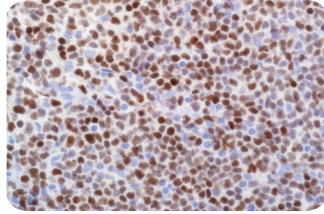
Discover the entire product portfolio at:  
**[SigmaAldrich.com/tissuedx](https://www.sigmaaldrich.com/tissuedx)**



## Hematopathology



c-Myc (EP121)

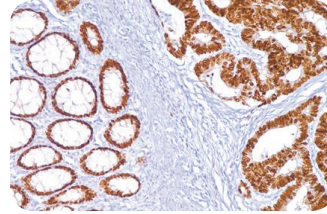


SOX-11 (MRQ-58)

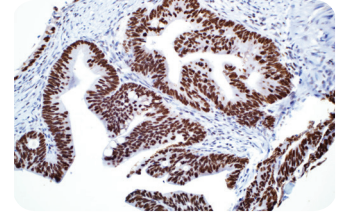
Cat. No.	Product Description
<b>395R-18</b>	c-Myc (EP121), 7 mL ready-to-use ready-to-use**
<b>104R-18</b>	CD4 (SP35), 7 mL ready-to-use**
<b>138M-18</b>	CD138/syndecan-1 (B-A38), 7 mL ready-to-use**
<b>382M-18</b>	SOX-11 (MRQ-58), 7 mL ready-to-use**
<b>312R-18</b>	PAX-5 (SP34), 7 mL ready-to-use**



## Gastrointestinal (GI) Pathology



CDX-2 (EPR2764Y)

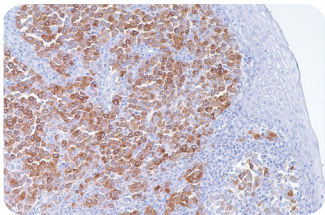


SATB2 (EP281)

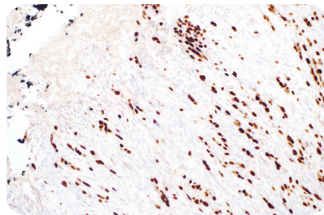
Cat. No.	Product Description
<b>235R-18</b>	CDX-2 (EPR2764Y) 7 mL ready-to-use**
<b>384R-18</b>	SATB2 (EP281) 7 mL ready-to-use**



## Dermatopathology



MART-1 (Melan A) (M2-7C10)

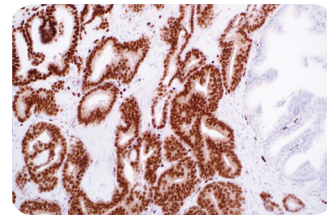


SOX-10 (EP268)

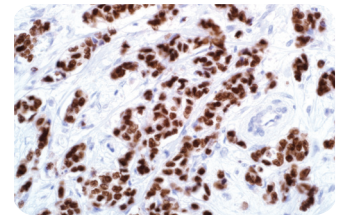
Cat. No.	Product Description
<b>198M-18</b>	CD123 (6H6) 7 mL ready-to-use**
<b>281M-98</b>	MART-1 (Melan A) (M2-7C10) 7 mL ready-to-use**
<b>284M-98</b>	Microphthalmia Transcription Factor (MiTF) (C5/D5) 7 mL ready-to-use**
<b>383R-18</b>	SOX-10 (EP268) 7 mL ready-to-use**



## Genitourinary (GU) Pathology



ERG (EP111)

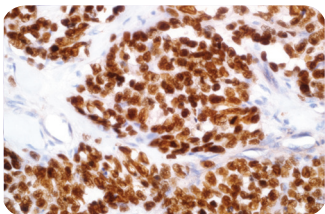


GATA3 (L50-823)

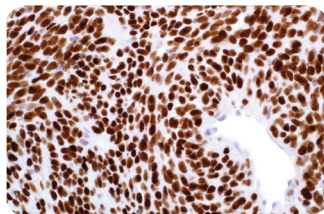
Cat. No.	Product Description
<b>434R-18</b>	ERG (EP111) 7 mL ready-to-use**
<b>390M-18</b>	GATA3 (L50-823) 7 mL ready-to-use**
<b>441R-18</b>	NKX3.1 (EP353) 7 mL ready-to-use**



## Soft Tissue Pathology



MyoD1 (EP212)

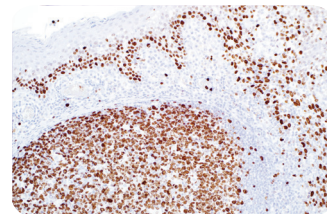


TLE1 (1F5)

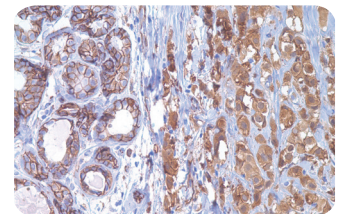
Cat. No.	Product Description
<b>386R-18</b>	MyoD1 (EP212) 7 mL ready-to-use**
<b>354R-18</b>	TFE3 (MRQ-37) 7 mL ready-to-use**
<b>401M-18</b>	TLE1 (1F5) 7 mL ready-to-use**



## Breast/Gynecological Pathology



Ki-67 (SP6)



p120 Catenin (MRQ-5)

Cat. No.	Product Description
<b>246R-18</b>	E-cadherin (EP700Y) 7 mL ready-to-use**
<b>275R-18</b>	Ki-67 (SP6) 7 mL ready-to-use**
<b>420M-18</b>	p120 Catenin (MRQ-5) 7 mL ready-to-use**

\*\*Also available in concentrate sizes.



# Water Purification Solutions

Our Milli-Q® lab water portfolio offers a broad range of pure and ultrapure water purification systems and services designed for scientists working on tissue pathology. Our pure, ultrapure, and Clinical Laboratory Reagent Water (CLRW) purification systems deliver constant and reliable water quality in the volumes and distribution formats needed to best fit your pathology laboratory's specific needs.

- Milli-Q® IQ 7000 purification system provides ultrapure water free of trace organic molecules, including enzymes and microbials, and ions.
- Elix® and Milli-Q® HX 7000 purification systems contain Elix® electrodeionization technology which ensures consistent and reliable pure water, free of contaminants that may interfere with your fixation and staining procedures.
- Milli-Q® CLX 7000 series analyzer feed systems containing Elix® technology can feed automated, high-volume, high-throughput slide stainers, and can provide CLRW to your laboratory's clinical chemistry analyzer.

To learn more about our portfolio of biomedical lab water systems, please visit: [SigmaAldrich.com/clinical-water](https://www.sigmaaldrich.com/clinical-water)

Products included in this brochure are not available in all countries.  
Contact your local sales representative or dealer for details.

MilliporeSigma  
400 Summit Drive  
Burlington, MA 01803

## To place an order or receive technical assistance

Order/Customer Service: [SigmaAldrich.com/order](https://SigmaAldrich.com/order)  
Technical Service: [SigmaAldrich.com/techservice](https://SigmaAldrich.com/techservice)  
Safety-related Information: [SigmaAldrich.com/safetycenter](https://SigmaAldrich.com/safetycenter)

[SigmaAldrich.com](https://SigmaAldrich.com)

