

Specification Sheet

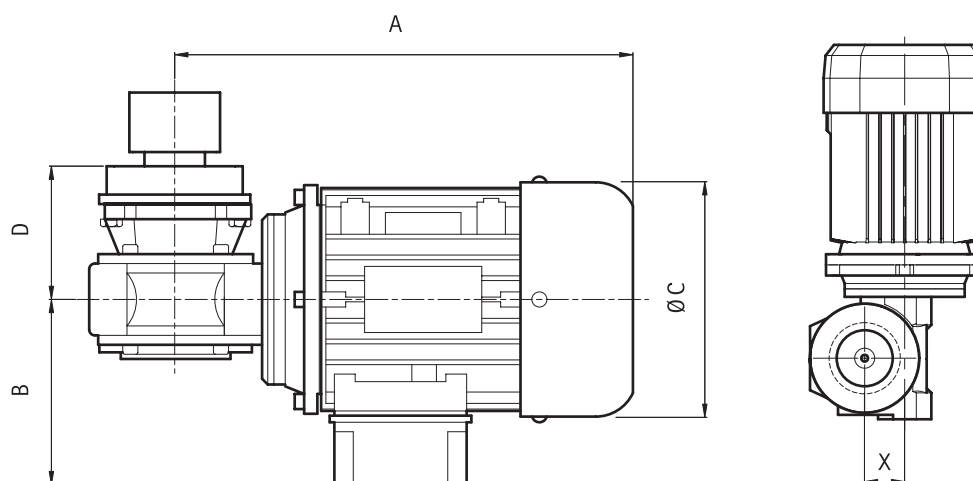
NovAseptic[®] Mixer, Drive Unit, GMP

Catalogue Number:

GM#-4#-64##

Product Description

The NovAseptic[®] mixers offer a complete solution for mixing throughout the process line and are designed for a wide variety of mixing applications in the pharmaceutical and biotechnology industries.



Catalogue No. Structure

GM	#	/	4#	#	#	-	64##
Mixer	Size		Speed Counter Option A = Speed Counter compatible Drive Unit B = Drive Unit with Speed Counter	Shaft Option 0 = 0mm standard 1 = 60 mm extension (only for GMP50) 2 = 100 mm extension	Drive Unit Color 1 = Green		Motor

Nominal Dimensions in mm.

Catalogue No.	A	B	C	D	X	Mixer Model
GM05/4A01-6410	278.5	115	130	97	31	GMP50
GM05/4A11-6410	278.5	115	130	140	31	GMP50
GM05/4B01-6410	278.5	115	130	97	31	GMP50
GM05/4B11-6410	278.5	115	130	140	31	GMP50
GM1/4A01-6410	278.5	115	130	85	31	GMP100
GM1/4A21-6410	278.5	115	130	170	31	GMP100
GM1/4B01-6410	278.5	115	130	85	31	GMP100
GM1/4B21-6410	278.5	115	130	170	31	GMP100
GM5/4A01-6420	300.5	124	145	85	31	GMP500
GM5/4A21-6420	300.5	124	145	170	31	GMP500
GM5/4B01-6420	300.5	124	145	85	31	GMP500
GM5/4B21-6420	300.5	124	145	170	31	GMP500
GM10/4A01-6420	300.5	124	145	90	31	GMP1000
GM10/4A21-6420	300.5	124	145	170	31	GMP1000
GM10/4B01-6420	300.5	124	145	90	31	GMP1000
GM10/4B21-6420	300.5	124	145	170	31	GMP1000
GM20/4A01-6430	337.5	142	156	103	40	GMP2000
GM20/4A21-6430	337.5	142	156	191	40	GMP2000
GM20/4B01-6430	337.5	142	156	103	40	GMP2000
GM20/4B21-6430	337.5	142	156	191	40	GMP2000
GM50/4A01-6440	337	142	156	104	40	GMP5000
GM50/4A21-6440	337	142	156	195	40	GMP5000
GM50/4B01-6440	337	142	156	104	40	GMP5000
GM50/4B21-6440	337	142	156	195	40	GMP5000
GM100/4A01-6450	392.7	147	178	121	50	GMP10000
GM100/4A21-6450	392.7	147	178	212	50	GMP10000
GM100/4B01-6450	392.7	147	178	121	50	GMP10000
GM100/4B21-6450	392.7	147	178	212	50	GMP10000
GM200/4A01-6465	456	169	195	125	75	GMP20000
GM200/4A21-6465	456	169	195	220	75	GMP20000
GM200/4B01-6465	456	169	195	125	75	GMP20000
GM200/4B21-6465	456	169	195	220	75	GMP20000
GM300/4A01-6465	456	169	195	125	75	GMP30000
GM300/4A21-6465	456	169	195	220	75	GMP30000
GM300/4B01-6465	456	169	195	125	75	GMP30000
GM300/4B21-6465	456	169	195	220	75	GMP30000

Specifications

Net Weight (approximate)

Mixer Assembly	GMP50	GMP100	GMP500	GMP1000	GMP2000	GMP5000	GMP10000	GMP20000	GMP30000
Weight kg (lb)	8 (17.6)	8 (17.6)	10 (22.0)	10 (22.0)	15.2 (33.5)	14.7 (32.4)	25.4 (56)	45 (100.0)	47 (103.0)

General Motor Data

Voltage	230/400V AC - 50 Hz and 460 V - 60 Hz								
Number of Poles	2	2	2	2	2	2	2	4	4
Degree of Protection	IP 55								
Insulating Class	The Quality Assurance system ensure the quality and traceability at all stages of the process.								
Ventilation	For non-standard NovAseptic® Mixer Options, please contact us for information.								
Color	Green, complies with the Code of Federal Regulations (FDA), US 21 CFR 170 - 199.								
Oil	Synthetic, complies with the Code of Federal Regulations (FDA) 21 CFR								
Certified	CE / CSA/ UL								
Thermistor	1 (PTC, 155 °C)								

Drive Unit Specifications (motor and frame)

	Brand	Max Power (kW)		Max Current (A)		Frame (IEC)
		50Hz	60Hz	230 VAC*	400 VAC*	
GMP50	Nord™ 63L2	0.25	0.30	1.21	0.7	63/B14
GMP100	Nord™ 63L2	0.25	0.30	1.21	0.7	63/B14
GMP500	Nord™ 71L/2	0.55	0.65	2.17	1.25	71/B14
GMP1000	Nord™ 71L/2	0.55	0.65	2.17	1.25	71/B14
GMP2000	Nord™ 80SH/2 IE2	0.75	0.86	2.77	1.60	80/B14
GMP5000	Nord™ 80LH/2 IE2	1.10	1.26	4.04	2.33	80/B14
GMP10000	Nord™ 90LH/2 IE2	2.2	2.53	7.45	4.30	90/B14
GMP20000	Nord™ 100AH/4 IE2	3.00	3.00	11.4	6.59	100/B14
GMP30000	Nord™ 100AH/4 IE2	3.00	3.00	11.4	6.59	100/B14

Drive Unit Specifications (gearbox and complete drive unit)

Mixer Size	Type Nord	Gear Box Ratio (i)	Outer Driving Head Torque (Nm)	Design Speed (rpm)*
GMP50	SK1SI31	7.5	1	50 - 490
GMP100	SK1SI31	7.5	2	50 - 490
GMP500	SK1SI31	7.5	6	50 - 490
GMP1000	SK1SI31	7.5	8	50 - 490
GMP2000	SK1SI40	7.5	13	50 - 490
GMP5000	SK1SI40	7.5	26	50 - 490
GMP10000	SK1SI50	7.5	35	50 - 450
GMP20000	SK1SI75	5	60	35 - 335
GMP30000	SK1SI75	7.5	150	25 - 245

Additional Information

Environment Temperature**	0 to 40 °C (32 to 104 °F)
Design Pressure	Atmospheric pressure
Operating Speed	Maximum operating speed has to be validated for each process individually, depending on volume, viscosity etc. A variable frequency drive (VFD) must be used with all NovAseptic® mixers.
Labeling	Each Drive Unit is individually labeled for full traceability according to our QA procedures.
Packaging	The Drive Unit is packaged in a closed box.
Quality Control	Our Quality Assurance System guarantees the control and traceability at all stages of the manufacturing.
Options	For non-standard NovAseptic® Mixer Options, please contact your local sales representative for information.

*Note: Design Speed is the mechanical limit.

**Note: The assembled NovAseptic® Mixer may have different design temperature and/or pressure limits. The weakest part in the assembled product sets the final permitted design temperature and pressure limits.



www.emdmillipore.com

EMD Millipore, the M mark and NovAseptic are registered trademarks of Merck KGaA, Darmstadt, Germany.
Specifications subject to change without notice.
Lit. No. SP1004EN00 PS-SBU-13-07736 Ver. 8.0 3/2016
©2016 EMD Millipore Corporation, Billerica, MA 01821 U.S.A. All rights reserved.
All trademarks belonging to third parties are the property of their respective owners.

To place an order or receive technical assistance

In the U.S. and Canada, call toll-free [1-800-645-5476](tel:1-800-645-5476)

For other countries across Europe and the world,
please visit www.millipore.com/offices

For Technical Service, please visit
www.millipore.com/techservice