

Specification Sheet

NovAseptic® Mixer, Mixing Head, GMC

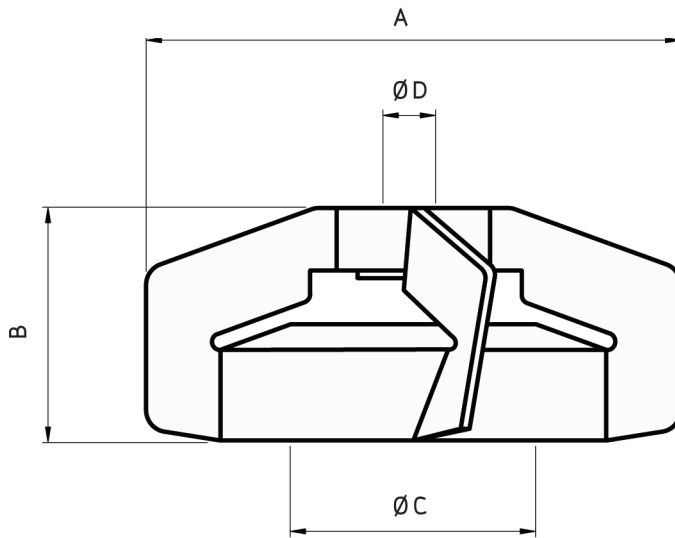
PRODUCT DESCRIPTION

The NovAseptic mixers offer a complete solution for mixing throughout the process line and are designed for a wide variety of mixing applications in the pharmaceutical and biotechnology industries.

Catalogue No.

GMC#/12

GMC#/12 EP



Catalogue Number Structure

GMC

Mixer

#

Size

/

12

12 and 120 Manually Polished

12EP and 120EP Manually Polished and Electro Polished

Nominal Dimensions in mm (in.)

Catalogue No.	A	B	C	D	Compatible Mixer
GMC75/12	80 (3.15)	54 (2.12)	34 (1.34)	20 (0.79)	GMC75
GMC75/12EP	80 (3.15)	54 (2.12)	34 (1.34)	20 (0.79)	GMC75
GMC100/12	104 (4.09)	55 (2.17)	56 (2.20)	20 (0.79)	GMC100
GMC100/12EP	104 (4.09)	55 (2.17)	56 (2.20)	20 (0.79)	GMC100
GMC130/12	130 (5.12)	55 (2.17)	56 (2.20)	20 (0.79)	GMC130
GMC130/12EP	130 (5.12)	55 (2.17)	56 (2.20)	20 (0.79)	GMC130
GMC140/12	140 (5.51)	55 (2.17)	56 (2.20)	20 (0.79)	GMC 140
GMC140/12EP	140 (5.51)	55 (2.17)	56 (2.20)	20 (0.79)	GMC 140
GMC150/12	173 (6.81)	82 (3.24)	87 (3.43)	20 (0.79)	GMC150
GMC150/12EP	173 (6.81)	82 (3.24)	87 (3.43)	20 (0.79)	GMC150
GMC190/12	190 (7.48)	82 (3.24)	87 (3.43)	20 (0.79)	GMC190
GMC190/12EP	190 (7.48)	82 (3.24)	87 (3.43)	20 (0.79)	GMC190
GMC200/12	220 (8.86)	134 (5.27)	87 (3.43)	30 (1.18)	GMC200
GMC200/12EP	220 (8.86)	134 (5.27)	87 (3.43)	30 (1.18)	GMC200
GMC275/12	275 (10.83)	117 (4.61)	170 (6.69)	30 (1.18)	GMC275
GMC275/12EP	275 (10.83)	117 (4.61)	170 (6.69)	30 (1.18)	GMC275

Net Weight (approximate)

Mixing Head	GM 75/12	GM 100/12	GM 130/12	GM 140/12	GM 150/12	GM 190/12	GM 200/12	GM 275/12
Weight kg (lb)	0.7 (1.4)	1 (2.3)	1.1 (2.4)	1.1 (2.5)	2.2 (4.80)	2.2 (4.88)	4.4 (9.70)	6.3 (13.9)

Material	Bar		Plate		Female Bearing
	stainless steel in compliance with		stainless steel in compliance with		
Material Code	316L	EN 1.4435	316L	EN 1.4435	Ceramic SiC (SsiC)

Specifications

Surface Roughness	Surface Ra \leq 0.5 μ m (20 μ in) (Optional Ra \leq 0.25 μ m (10 μ in))
Surface Treatment	Manually polished or manually polished and electro polished. No polishing compounds of animal origin used.
Operating Temperature*	5 to 135 °C (41 to 275 °F)
pH Range	1-14
Labeling	Each mixing head is individually labeled for full traceability according to Millipore QA procedures.
Packaging	The mixing head is packaged in a closed box.
Quality Control	Millipore Quality Assurance System guarantees the control and traceability of the product.
Options	For non-standard NovAseptic mixer options, please contact Millipore for further information.

*Note: The assembled NovAseptic Mixer may have different design temperature and/or pressure limits. The weakest part in the assembled product determines the maximum design temperature and pressure limits.

FOR ADDITIONAL INFORMATION CALL YOUR NEAREST MILLIPORE OFFICE:

In the U.S. and Canada, call toll-free
1-800-MILLIPORE (1-800-645-5476)

In the U.S., Canada and Puerto Rico, fax orders to
1-800-MILLIFX (1-800-645-5439)

www.millipore.com

ADVANCING LIFE SCIENCE TOGETHER®
Research. Development. Production.



Millipore, NovAseptic and Advancing Life Science Together are registered trademarks of Millipore Corporation. The M mark is a trademark of Millipore Corporation. Specifications subject to change without notice.

Lit. No. SP1017EN00 Rev. A 4/11

©2011 Millipore Corporation, Billerica MA, 01821 USA. All rights reserved.