



SIGMA-ALDRICH

3050 Spruce Street
Saint Louis, Missouri 63103 USA
Telephone 800-325-5832 • (314) 771-5765
Fax (314) 286-7828
email: techserv@sial.com
sigma-aldrich.com

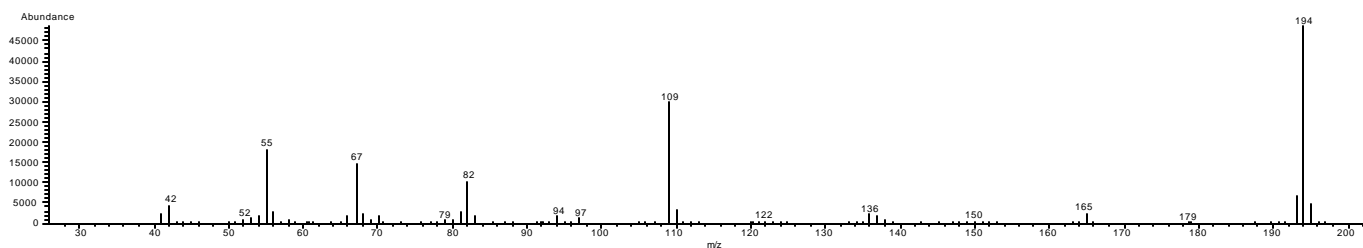
Product Information

CAFFEINE

Methanol Solution

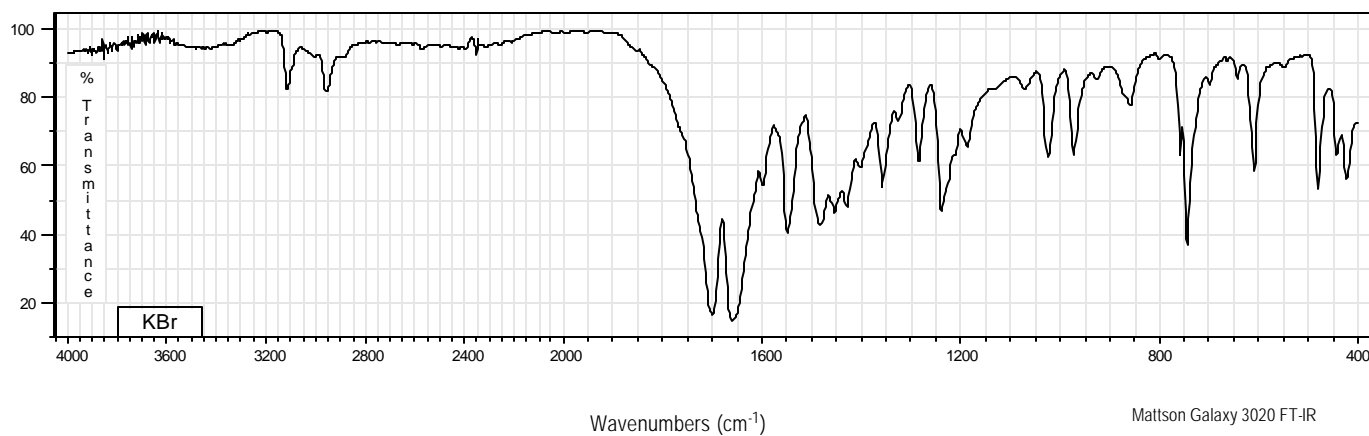
Product Number	C 6035	Synonyms	Coffeinum; Guanine; Methyltheobromine
Lot Number	31K8805	Stability	If stored at 2-8°C in an air tight container, protected from light, decomposition of the product is less than 1% in 48 months. After opening, concentration may change due to loss of solvent.
CAS Number	[58-08-2]	Expiration Date	November 2005
Concentration	1.03 mg Caffeine /mL GC grade methanol (conc. verified by UV)	Storage	2-8°C; After opening, transfer contents to small vial provided for your convenience.
Molecular Formula	$C_8H_{10}N_4O_2$		
Molecular Weight	194.2		
DEA Class	Formulation of a non controlled substance		

70 eV Electron Ionization Mass Spectrum



Hewlett-Packard 5890 Series II Gas Chromatograph
Hewlett-Packard 5971 Mass Selective Detector
Hewlett-Packard G1034C MS ChemStation (HP-DOS series)

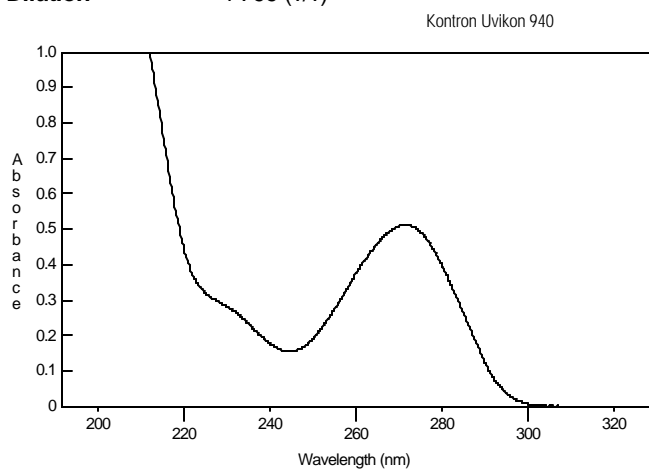
FT-IR



Mattson Galaxy 3020 FT-IR

Ultraviolet Spectrum

Peak 271.8 nm
Absorbance 0.513
Solvent 0.2 N H₂SO₄
Dilution 1 : 99 (v/v)



Capillary Gas Chromatography

Column Supelco SPB-1 (Cat. No. 2-4162)
I.D. 0.20 mm **Length** 15 m **Film Thickness** 0.20 μm
Oven Temperature 50°C (2 min.), then 15°/min. to 300°C, hold 11 min.
Injector Temperature 250°C, Split
Detector Hewlett-Packard 5971
Mass Selective Detector (70 eV, 40-500 m/z) Hewlett-Packard 5890

