

Product Information

Golgi Isolation Kit

Catalog Number **GL0010**
Storage Temperature 2–8 °C

TECHNICAL BULLETIN

Product Description

The Golgi apparatus consists of a series of flattened membrane vesicles. The stacks of flattened cisternae have three defined regions called the cis, the medial, and the trans-Golgi. Transport vesicles that contain newly synthesized proteins move from the endoplasmic reticulum (ER) by fusing with the cis-Golgi cisternae, delivering proteins for further Golgi modifications. These proteins then progress from the cis, through the medial, to the trans-Golgi. On the way, the proteins are subjected to different modifications depending on their structure and destination. Modified proteins are transported out of the Golgi apparatus in coated vesicles that bud off the trans-Golgi cisternae.¹

The Golgi Isolation Kit provides a method for isolating Golgi membranes from mammalian soft tissues by a discontinuous density gradient.²⁻⁶

The degree of Golgi enrichment can be determined by assaying the activity of UDP-galactosyl transferase⁷ or by immunodetection of Golgi specific marker proteins like β -COP or GM130 using appropriate antibodies (Catalog Numbers G6160 and G7295, respectively). Separation from other organelles can be measured using the appropriate marker detection kits (see Additional Kits for measuring enzymatic activities).

The kit was optimized using rat liver and tested on rat kidney, spleen, and heart.

Components

The reagents are sufficient for Golgi isolation from 50 grams of tissue.

Isolation Buffer, 5× 120 ml
Catalog Number I4534

2.3 M Sucrose Solution 120 ml
Catalog Number S6571

Protease Inhibitor Cocktail 5 ml
for use with mammalian cell and tissue extracts
Catalog Number P8340

Reagents and Equipment Required but Not Provided

- Ultrapure water (17 M Ω -cm or equivalent)
- PBS (Catalog Number D8537)
- Ultracentrifuge with fixed angle or swinging bucket head capable of 150,000 $\times g$ and appropriate tubes
- Tissue homogenizer - Overhead electric motor together with Potter-Elvehjem PTFE pestle in glass tube homogenizer.
- Scalpel, forceps, and glass plate
- Microcentrifuge tubes
- Pasteur pipettes

Additional Kits for measuring enzymatic activities:

- β -N-Acetylglucosaminidase Assay Kit (Catalog Number CS0780) - β -N-Acetylglucosaminidase is a lysosomal marker.
- Cytochrome c Oxidase Assay Kit (Catalog Number CYTOCOX1) - Cytochrome c oxidase is a mitochondrial marker.
- Cytochrome c Reductase Assay Kit (Catalog Number CY0100) - Cytochrome c reductase is an endoplasmic reticulum (ER) marker.
- Catalase Assay Kit (Catalog Number CAT100) - Catalase is a peroxisomal marker.

Precautions and Disclaimer

This product is for R&D use only, not for drug, household, or other uses. Please consult the Material Safety Data Sheet for information regarding hazards and safe handling practices.

Preparation Instructions

It is recommended to use ultrapure (17 M Ω -cm or equivalent) water when preparing the reagents.

Prior to use, thaw the kit components and mix until homogeneous.

1 \times Isolation Buffer - Dilute an aliquot of the Isolation Buffer, 5 \times (Catalog Number I4534) 5-fold with water. Sixty ml of 1 \times Isolation Buffer are required for 5 grams of tissue.

Sucrose Solutions - Prepare sucrose solutions at different concentrations for a sucrose gradient by diluting the 2.3 M Sucrose Solution (Catalog Number D6571) with 1 \times Isolation Buffer. The following volumes are suitable for preparing a gradient for Golgi isolation from ~5 grams of tissue:

45 ml of 0.25 M Sucrose Solution
20 ml of 1.1 M Sucrose Solution
10 ml of 1.84 M Sucrose Solution

Supplement all the sucrose solutions with Protease Inhibitor cocktail [1% (v/v) final concentration].

Storage/Stability

The kit is shipped on wet ice. After receiving the kit, the Protease Inhibitor Cocktail (Catalog Number P8340) should be stored in working aliquots at -20 °C. The 2.3 M Sucrose Solution (Catalog Number S6571) and the Isolation Buffer, 5 \times (Catalog Number I4534) can be stored at 2–8 °C. However, in order to avoid contamination of these solutions they can be stored at -20 °C, especially after opening the bottles.

The components are stable for 24 months when stored unopened at the appropriate temperatures.

Procedure

Isolation of Golgi membranes from rat liver (~5 grams of tissue).

Notes:

- The procedure can be scaled up/down.
- The procedure can be used for other tissues; however, the homogenization conditions (strokes, speed, amount of buffer, etc.) must be optimized.
- The use of a homogenization device other than PTFE in glass (detailed in the Reagents and Equipment Required but Not Provided section) is possible, but requires optimization.
- Perform the whole procedure at 2–8 °C. All the solutions and equipment should be pre-cooled before use.

1. Use a fresh tissue sample from an animal that was starved overnight and sacrificed the following morning. It is possible to use a flash frozen sample; however, the Golgi fraction isolated may be more contaminated with other organelles and some enzyme activities may be affected compared to a sample prepared using fresh tissue.
2. Wash the tissue with ice-cold PBS or any other isotonic buffer. Wash the tissue briefly with 10 ml of 0.25 M Sucrose Solution.
3. Weigh the tissue.
4. Mince the tissue with scissors. If excessive blood is observed, wash the tissue once again with 5–10 ml of 0.25 M Sucrose Solution.
5. Suspend the minced tissue with 1 ml of the 0.25 M Sucrose Solution per 1 g of tissue.
6. Transfer the tissue suspension into the appropriate homogenization tube and homogenize with 6 slow motions of the PTFE pestle at 300 rpm.
7. Transfer the homogenate into a centrifuge tube and centrifuge at 3,000 $\times g$ for 15 minutes at 2–8 °C. Transfer the supernatant to a fresh tube.
8. Calculate the sucrose concentration in the supernatant according to Equation 1:

Equation 1.

$$[\text{Sucrose}] = \frac{0.25 \times \text{Buffer Volume}}{\text{Tissue Weight} + \text{Buffer Volume}}$$

Where:

[Sucrose] – molar sucrose concentration in the supernatant

0.25 – molar sucrose concentration in the homogenization buffer

Buffer Volume – volume (ml) of the buffer used to resuspend tissue (step 5)

Tissue Weight – weight of tissue in grams (step 3)

9. Calculate the volume of the 2.3 M Sucrose Solution (Catalog Number D6571) to be added to the supernatant to obtain a final sucrose concentration of 1.25 M according to Equation 2:

Equation 2.

$$\text{Sucrose Volume} = \frac{\text{Sup Volume} \times (1.25 - [\text{Sucrose}])}{1.05}$$

Where:

Sucrose Volume – volume (ml) of 2.3 M Sucrose Solution to be added to the supernatant in order to obtain a final concentration of 1.25 M sucrose.

Sup Volume – volume (ml) of the supernatant

[Sucrose] – molar sucrose concentration in the supernatant (from Equation 1).

1.05 – the difference in the molarity between the sucrose stock solution (2.3 M) and the sucrose concentration of the sample (1.25 M).

10. Adjust the sucrose concentration in the sample (supernatant) to 1.25 M by adding the volume of 2.3 M Sucrose Solution calculated in Equation 2. Mix by inverting the tube followed by a brief vortex.
11. Build a discontinuous gradient in an ultracentrifuge tube. The order of sucrose gradient fractions in the tube (from bottom to top) should be:
 - 1.84 M Sucrose Solution
 - Sample (sucrose concentration adjusted to 1.25 M)
 - 1.1 M Sucrose Solution
 - 0.25 M Sucrose Solution

Notes:

- The total volume of the separation gradient can be in the range of 4–50 ml. The gradient volume will dictate the amount of sample to be loaded on the gradient. Examples are given in Table 1.
- The ratio between the volumes of the different sucrose fractions in the gradient depends on the type of rotor used. Table 1 summarizes the suggested ratios for gradient preparation in a swinging or a fixed angle rotor. The sample volume is assigned a relative volume of 1.

Table 1.
Golgi Density Gradient Preparation

Gradient Fraction	Relative Volumes		Suggested Volumes (ml)	
	Swinging angle rotor	Fixed angle rotor	Swinging (SW50.1) 4-5 ml tube	Fixed (Ti45) 60 ml tube
1.84 M Sucrose (bottom)	0.3–0.5	1	0.5	10
Sample (1.25 M Sucrose)	1	1	1.5	10
1.1 M Sucrose	0.7–1.5	1.7–2	1	20
0.25 M Sucrose (top)	0.5–1	0.5–1	1	10

12. Centrifuge the tubes at $120,000 \times g$ for 3 hours at 2–8 °C.
13. Withdraw the Golgi enriched fraction from the 1.1 M/0.25 M sucrose interphase.

The storage conditions for the enriched Golgi fraction depend on the required application. For example, the fraction can be snap frozen for further detection of the enzymatic activities listed in the Reagents and Equipment Required but Not Provided Section.

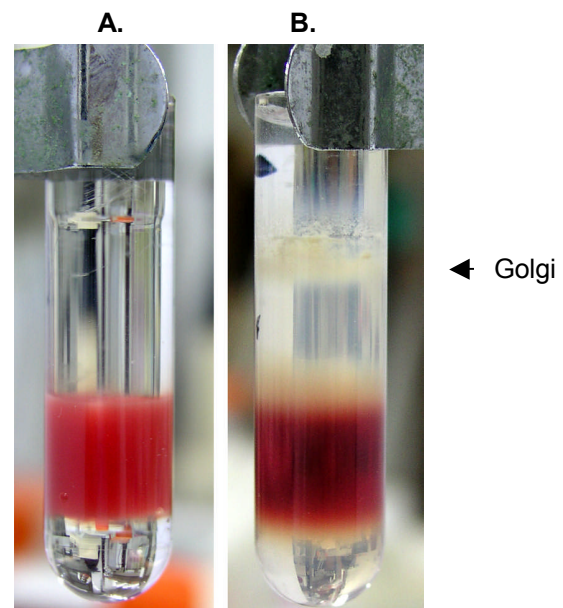
Results

Three bands will be visualized on the gradient:

First band at the 1.84 M/1.25 M interphase
 Second band at the 1.25 M/1.1 M interphase
 Third band at the 1.1 M/0.25 M interphase

In addition, there may be a lipid layer floating on the very top of the gradient.

Figure 1.
Golgi Density Gradient



Rat liver homogenate was prepared according to the procedure for this kit. The $3,000 \times g$ supernatant containing sucrose (1.25 M) was used in building a step density gradient.

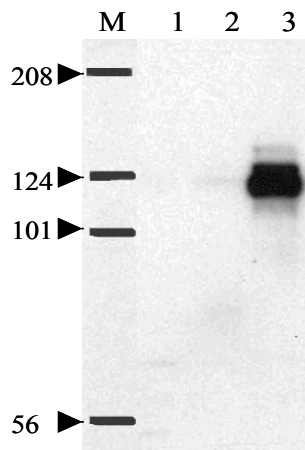
A – The density gradient before centrifugation

B – The density gradient after centrifugation
 The arrow indicates the position of the Golgi enriched fraction. The Golgi enriched fraction is located at the 1.1 M/0.25 M sucrose interphase.

The enrichment of the Golgi fraction is demonstrated by detection of the Golgi marker, GM130 (see Figure 2).

Figure 2.

Detection of the Golgi marker, GM130, during the different steps of Golgi enrichment



The Golgi enriched fraction was isolated from rat kidney using the Golgi Isolation Kit following the described procedure.

15 µg of total protein from each step were separated on a 7.5% SDS-PAGE gel:

M – marker

Lane 1 – homogenate

Lane 2 – 3000 × g supernatant

Lane 3 – Golgi gradient enriched fraction.

An immunoblot was performed using anti-GM130 antibody (Catalog Number G7295).

References

1. Munro, S., Localization of proteins to the Golgi apparatus. *Trends Cell Biol.*, **8**, 11-15 (1998).
2. Allan, V.J., and Vale, R.D., Cell cycle control of microtubule-based membrane transport and tubule formation *in vitro*. *J. Cell Biol.*, **113**, 347-359 (1991).
3. Prchla, E. *et al.*, Virus-mediated release of endosomal content *in vitro*: different behavior of adenovirus and rhinovirus serotype 2. *J. Cell Biol.*, **131**, 111-123 (1995).
4. Sjoberg, E.R., and Varki, A., Kinetic and spatial interrelationships between ganglioside glycosyltransferases and O-acetyltransferase(s) in human melanoma cells. *J. Biol. Chem.*, **268**, 10185-10196 (1993).
5. Surroca, A., and Wolff, D., Inositol 1,4,5-tris-phosphate but not ryanodine-receptor agonists induces calcium release from rat liver Golgi apparatus membrane vesicles. *J. Membr. Biol.*, **177**, 243-249 (2000).
6. Wong, S.H. *et al.*, Syntaxin 7, a novel syntaxin member associated with the early endosomal compartment. *J. Biol. Chem.*, **273**, 375-380 (1998).
7. Roth, J., and Berger, E.G., Immunocytochemical localization of galactosyltransferase in HeLa cells: codistribution with thiamine pyrophosphatase in trans-Golgi cisternae. *J. Biol. Chem.*, **93**, 223-229 (1982).

GL,EB,MAM 07/11-1

Sigma brand products are sold through Sigma-Aldrich, Inc.

Sigma-Aldrich, Inc. warrants that its products conform to the information contained in this and other Sigma-Aldrich publications. Purchaser must determine the suitability of the product(s) for their particular use. Additional terms and conditions may apply. Please see reverse side of the invoice or packing slip.