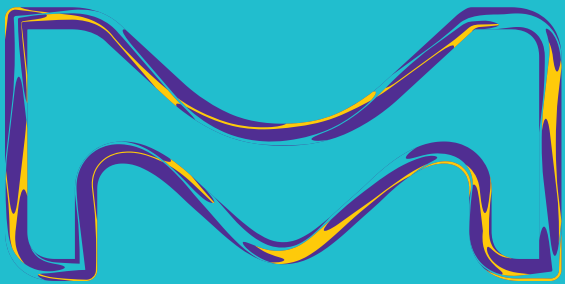


# FOOD SAFETY TESTING

Your trusted partner in quality and  
regulatory compliance for food applications.



# WE ARE A LEADER IN FOOD SAFETY

The Life Science business of MilliporeSigma brings together the world-class products and services, innovative capabilities, and exceptional talent of MilliporeSigma and Sigma-Aldrich, to create a global leader in the life science industry. We operate as “MilliporeSigma”.



## **Our expertise in the food industry**

We provide dependable, complete packages that address your food and beverage testing needs throughout the entire workflow.



## **Bringing wholesome and safe products to market fast.**

Contaminated food can cause severe food poisoning, with potentially serious consequences for those affected. The food industry faces ever increasing regulations in many countries.



## **What makes us different?**

We have developed a range of innovative products and solutions specifically tailored to the needs of food and beverage companies. They provide rapid and objective answers to all current and emerging analytical, microbiological and hygiene issues.

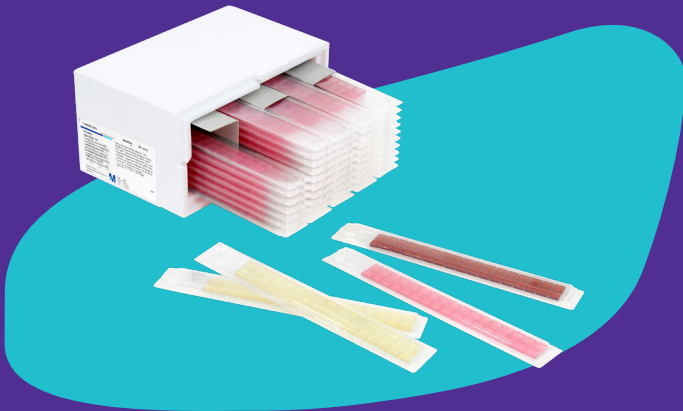


[SigmaAldrich.com/industries/food-and-beverage.html](https://SigmaAldrich.com/industries/food-and-beverage.html)

# OUR KNOW-HOW YOUR CHOICE

Access our know-how in analytical food testing and  
experience your right method

Over 100,000 Products are waiting for you.



## WORKFLOW: FOOD

# LET'S CREATE SAFE FOOD. TOGETHER.



### 1 SAMPLE LOG IN



### 2 PREPARATION

#### ANALYTICAL SAMPLE PREP

##### Instrumental Test Kits

- RQflex® 20
- Reflectoquant® Test Strips
- Lab Water systems**
- Milli-Q®

##### Chromatography sample prep

- Smplicity®, Millex® filters and SPE tubes and vacuum manifold, QuEChERS tubes and shakers

##### SPME

- SPME fibers



##### Solvents

- LiChrosolv®

##### Acids and Bases

- EMSURE® inorganic reagents and solvents

#### MICROBIOLOGY SAMPLE PREP

##### Homogenizer

- ESH

##### Sample dilution

- DiluCult™

##### Sample enrichment

- GranuCult™



3

## ANALYSIS

### SAMPLE ANALYSIS

#### Chromatography

- HPLC, UHPLC and GC Columns

#### Thin Layer Chromatography

- TLC Plates

#### Lab Water systems

- Milli-Q®

#### Titration

- Titripur®, Titripac®

#### Disinfection residue checking

- MQuant™ test strips
- Reflectoquant™ strips
- Move colorimeter and test kits

#### Spectrophotometry

- Spectroquant® spectrophotometers, test kits

#### Karl Fischer reagents

- Aquastar™

#### Solvents

- LiChrosolv®

#### Acids and Bases

- EMSURE® inorganic reagents and solvents

#### Ready-to-use culture media

- ReadyPlate™

#### Dehydrated culture media

- GranuCult™ Media

#### Lab Water Systems

- Milli-Q®

### MICROBIOLOGY SAMPLE ANALYSIS

#### Analytical air monitoring

- MAS-100®, MAS-100 Eco®

#### Surface monitoring

- Contact plates and MVP ICON®

#### Rapid pathogen detection

- Assurance GDS™ and PIPETMAX®



4

## RESULT INTERPRETATION

### Microbial identification

- ChromoCult® agar plates



5

## QA SUPPORT

### Supporting Documentation

- Certificates of analysis, Safety data sheets and Validation Guides, Milli-Q System Validation

### Standards and Certified Reference Materials

- Vitroids™, Lenticule®

# Pathogen Testing Solutions



*Bacillus cereus*



*Campylobacter*



*Clostridium perfringens*



*E. coli*



*Enterobacter sakazakii*



*Listeria* and *L. monocytogenes*



*Legionella*



*Salmonella*



*Staphylococcus aureus*



*Vibrio cholerae*



Rapid Pathogen Testing



Learn more at:  
[EMDMillipore.com/pathogen-and-spoilage-testing](https://EMDMillipore.com/pathogen-and-spoilage-testing)

# Environmental Monitoring Solutions

## Hygiene Monitoring



## Active air monitoring systems



## Passive Air Monitoring



## Surface and personnel monitoring solutions



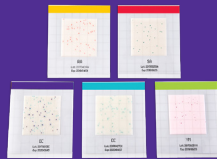
Learn more at:  
[EMDMillipore.com/environmental-monitoring](http://EMDMillipore.com/environmental-monitoring)

# Quality Control Solutions

## Agar plates and dehydrated culture media



## MC-Media Pads



## SimPlate® tests



## Certified Reference Microorganisms



\*Photo courtesy of Public Health England



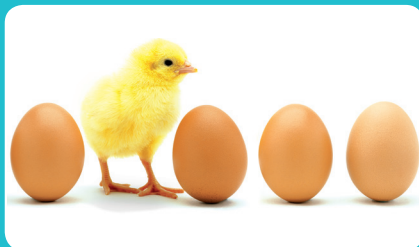
Learn more at:  
[EMDMillipore.com/quality-controlled-solutions](http://EMDMillipore.com/quality-controlled-solutions)

# Chemical Analysis

## Applications



Pesticides and Metabolite Residues



Toxins



Veterinary Drug Residue



Adulterants



Processing/Packaging Contaminants



Standards, Reference and Certified Reference Materials



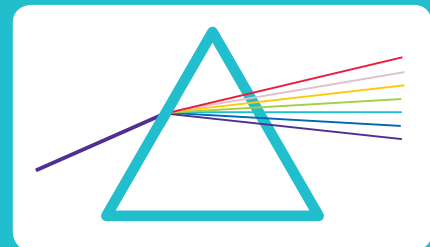
# Techniques



Titration/KF Residues



GC/GC-MS



ICP-MS/AAS



HPLC/LC-MS



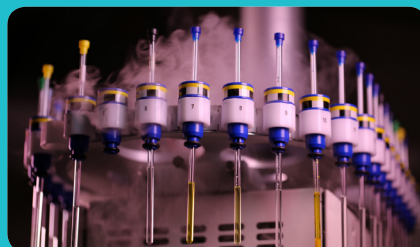
TLC/MS



Sample Prep



Mobile Laboratory



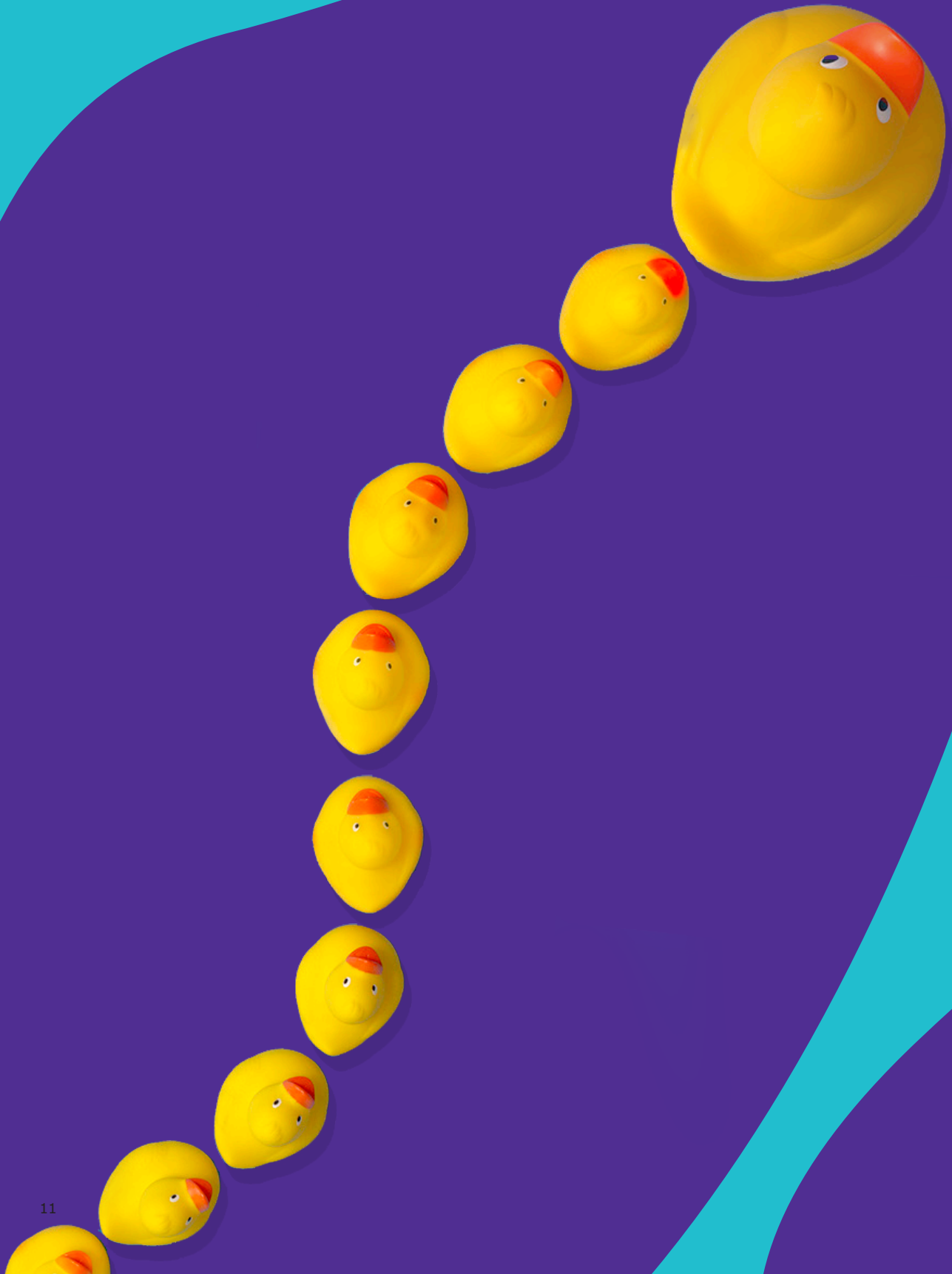
qNMR

Pesticides

Food & Cosmetic Components

Food Matrix

Amino Acid, Peptides & Protein Standards



# Are you ready to start testing?

## Services

Our Services support our customers in the food and beverage industry throughout the entire lifecycle of analytical testing in order to ensure optimum performance and regulatory compliance. Regardless of product, we offer a variety of services including:

- Validation services
- Application services
- Customer training
- Maintenance and repair



## Partnering with us Mitigates Supply Chain risk

We have developed a full range of e-commerce services designed to enable greater spend control. If you're looking to reduce inventory, automate payments, increase procurement fiscal control and/or reduce costs - we can tailor a convenient and cost saving e-solution to fit your needs.

Discover how our website is making it easier for you to stay productive and conduct your daily activities in a more efficient manner.

[SigmaAldrich.com/united-states/ordering/e-Commerce-Solutions](https://SigmaAldrich.com/united-states/ordering/e-Commerce-Solutions)

We strive to ensure that your equipment is performing at its best, in compliance with regulations, by offering top notch training and support with best-in-class practices and the most advanced technologies.

Let us be your preferred partner for analytical testing solutions and services as microbiology and regulatory experts.

MilliporeSigma  
400 Summit Drive  
Burlington, MA 01803

## To place an order or receive technical assistance

In the U.S. and Canada, call toll-free 1-800-645-5476

For other countries across Europe and the world, please visit: [EMDMillipore.com/offices](https://www.emdmillipore.com/offices)

For Technical Service, please visit: [EMDMillipore.com/techservice](https://www.emdmillipore.com/techservice)

[EMDMillipore.com](https://www.emdmillipore.com)

