

**Instruction Manual  
For  
STAR AKT1 ELISA Kit**

**Catalog # 17- 455**

Sufficient reagents for 96 assays per kit

<b>Contents</b>	<b>Page</b>
I. TEST PRINCIPLE	1
II. AKT BACKGROUND	1
III. ASSAY SENSITIVITY, DETECTION LIMITS and SPECIES REACTIVITY	2
IV. STORAGE OF KIT COMPONENTS	2
V. KIT COMPONENTS, PRECAUTIONS AND TECHNICAL NOTES	2 & 3
VI. PREPARATION OF SAMPLE	3
VII. REAGENT PREPARATION	4
VIII. ASSAY PROTOCOL	5
IX. CALCULATION OF RESULTS	6

***upstate***

now part of Millipore

sales orders 800 233 3991  
call collect from outside the u.s. 434 975 4300  
tech support 800 548 7853  
email techserv@upstate.com  
fax orders 866 831 3991  
www.upstate.com

**FOR RESEARCH USE ONLY.  
NOT RECOMMENDED OR  
INTENDED FOR DIAGNOSIS OF  
DISEASE IN HUMANS.  
DO NOT USE IN HUMANS.**

## I. TEST PRINCIPLE

The UPSTATE® colorimetric STAR (Signal Transduction Assay Reaction) ELISA kit is a solid phase sandwich enzyme linked immunosorbent assay that provides a fast, sensitive method to detect specific levels of signaling targets in whole cell extracts. The AKT1 plate is coated with a specific mouse monoclonal AKT1 capture antibody on the microwells of the 96-well clear plate. Sample lysate or the standard included in the kit are incubated in the microwells allowing AKT1 antigen to be captured in the plate wells. The plate is then washed to remove any non-bound unspecific material. The wells are then incubated with a specific rabbit anti-AKT1 antibody to detect the captured AKT1 on the plate well. The unbound detection antibody is washed away followed by incubation with an HRP-conjugated anti-rabbit antibody. This allows for a sensitive enzymatic detection of the sample. After the addition of TMB substrate and stop solution the absorbance is measured at 450 nm using a plate reader.

The entire assay takes less than 5 hours to complete with minimal hands-on time. Many of the reagents are supplied in ready-to use formulations for ease of use. The kit also includes a standard that is run as both a positive control and to develop a standard line of detection.

## II. AKT BACKGROUND

AKT is the major known effector of the PI3 Kinase pathway. The generation of PIP3, resulting from PI3 Kinase activation, results in the subsequent binding and activation of PDK1. PDK1 is known to phosphorylate Akt on Thr308. The Thr308 site is the site of activation for PP2A that results in the dephosphorylation of this site. Another kinase group, called the mTORC2 or TORC2 complex, phosphorylates Akt on Ser473. This complex is made up of the Ser/Thr kinase mTOR along with many other binding partners including at least Rictor, GβL, Sin1, and Protor. This site was previously thought to be phosphorylated by an unknown kinase tentatively referred to as PDK2, but that is now known to be wrong. This site is acted upon by a different phosphatase named PHLPP. PHLPP 1&2 dephosphorylate the Ser473 site of Akt. These two phosphorylations additively activate the Akt Ser/Thr kinase activity, and the use of phosphorylation state-specific antibodies directed against either of these sites can imply Akt activation. There are many, over 30, known substrates to Akt and many more being discovered. Some of the Akt targets include GSK, AS160, PRAS40, Raf-1, Bad, and PFK2,

### III. ASSAY SENSITIVITY, DETECTION LIMITS and SPECIES REACTIVITY

Sensitivity:	0.3 ng/mL.
Range of Detection:	0.3 to 20 ng/mL
Species Reactivity:	Human, mouse and rat

### IV. STORAGE OF KIT COMPONENTS

Maintain the unopened kit at 2-8°C until expiration date.

### V. KIT COMPONENTS

1. Capture Plate pre-coated with anti-AKT1 antibody: (Part No. 17-455A) One pre-coated 96-stripwell immunoplate sealed in a foil pouch.
2. Anti-AKT1 detection antibody: (Part No. 17-455B) One bottle (6 mL) of anti-AKT1 detection antibody containing sodium azide, ready to use.
3. ELISA Diluent: (Part No. 17-455C) One bottle (25 mL) of ELISA Diluent containing sodium azide, ready to use.
4. 25X ELISA Wash Buffer: (Part No. 17-455D) One bottle (50 mL) of 25X ELISA Wash Buffer.
5. Anti-Rabbit IgG HRP conjugate: (Part No. 17-455E) One vial (125 µL) of 100X anti-rabbit HRP conjugate containing thimerosal.
6. HRP Diluent: (Part No. 17-455F) One bottle (25 mL) of HRP Diluent containing thimerosal.
7. TMB Solution: (Part No. 17-455G) One bottle (25 mL) of stabilized tetramethylbenzidine (TMB), ready to use.
8. Stop Solution: (Part No. 17-455H) One bottle (25 mL) of stop solution, ready to use.
9. AKT1 Standard: (Part No. 17-455I) Two vials of AKT1 standard, lyophilized.
10. Plate Covers: Two plate covers.

---

### *Materials Not Supplied*

1. Multi-channel or repeating pipettes
2. Plate shaker (optional)
3. Pipettors & tips capable of accurately measuring 1-1000 µL
4. Graduated serological pipettes
5. 96-well microtiter Plate Reader with 450 nm filter
6. Graphing software for plotting data or graph paper for manual plotting of data
7. Microfuge tubes for standard and sample dilutions
8. Mechanical vortex
9. 1 liter container
10. Distilled or deionized water

---

## *Precautions*

- The instructions provided have been designed to optimize the kit's performance. Deviation from the instructions may result in suboptimal performance of the kit and the failure to produce accurate data.
- Caustic Material: Stop Solution. **Caution: Eye, hand, face, and clothing protection should be worn when handling this material.**
- **Safety Warnings and Precautions:** This kit is designed for research use only and not recommended for internal use in humans or animals. All chemicals should be considered potentially hazardous and principles of good laboratory practice should be followed.
- The Detection Antibody and ELISA Diluent contain sodium azide. Sodium azide may react with copper and lead plumbing to form highly explosive metal azides. Upon disposal, flush with large amounts of water to prevent azide build-up. Avoid contact with skin.
- The Anti-Rabbit IgG HRP Conjugate and HRP Diluent contain thimerosal. Thimerosal is highly toxic by inhalation, contact with skin or if swallowed. Thimerosal is a possible mutagen and should be handled accordingly.

---

## *Technical Notes*

- All kit reagents should be at room temperature (20°C to 25°C) just prior to use.
- Do not use reagents beyond the expiration date of the kit.
- Do not mix or interchange reagent from various kit lots.
- Manual Plate Washing: Vigorous washing and complete removal of all liquid by aspiration at the end of each washing step is very important to obtain low background values. Gentle agitation during the wash steps or a 2-3 minute soak may reduce background values.
- The desiccant enclosed in the 96-well capture plate pouch will keep the plate stable when stored at 2° to 8°C should the plate lose its seal during shipping.

## **VI. PREPARATION OF SAMPLE**

1. Culture cells and stimulate AKT activation as desired.
2. Remove culture media and wash cells twice with ice-cold 1X TBS (Tris Buffered Saline) or PBS (Phosphate Buffered Saline). Discard supernatant.
3. Add 5-10 mL of cold 1X RIPA containing 0.1% SDS and protease inhibitors per 150 mm tissue culture plate.  
**Note:** 10 mL of 1X RIPA containing 0.1% SDS can be prepared by adding 10 µL of 1 µg/µL Leupeptin, 10 µL of 1 µg/µL Aprotinin, 10 µL of 1 µg/µL Pepstatin, 100 µL of 100mM PMSF, 100 µL 10% SDS, 1 mL 10X RIPA (Cat. No. 20-188) to 8.77 mL of distilled or deionized water.
4. Scrape cells from plate with a rubber policeman.
5. Transfer cells in RIPA buffer to a microcentrifuge tube and incubate on ice for 15 minutes.
6. Vortex tube for 10 seconds or sonicate briefly for 10 seconds.
7. Clarify lysate by centrifugation at 12,000 rpm for 10 minutes at 4°C in a microcentrifuge prior to use.
8. Cell extract containing SDS must be diluted to 0.01% SDS using ELISA Diluent prior to use.

9. Collect the supernatant and calculate protein concentration using a Bradford Assay or by densitometry.
10. It is suggested that the cell lysate be used immediately following preparation. However, samples can be frozen and stored at  $-80^{\circ}\text{C}$  for later use. Frozen samples should be used within 6 months if storing at  $-80^{\circ}\text{C}$ . Avoid repeated freeze thaws.

**Further information regarding denatured lysate preparation protocols can be obtained at <http://www.upstate.com> Cell Lysate Extracts-General Protocols.**

## VII. REAGENT PREPARATION

### 1. 1X Wash Buffer

Warm the 25X ELISA Wash Buffer to room temperature and mix to ensure that any precipitated salts have re-dissolved. For 500 mL of Wash Buffer, combine 20 mL of 25X ELISA Wash Buffer and 480 mL distilled or deionized water. Stir to homogeneity. Wash Buffer can be stored for up to 4 weeks at  $2-8^{\circ}\text{C}$ . Discard the Wash Buffer if it becomes turbid or if a precipitate develops.

### 2. Anti-Rabbit IgG HRP Conjugate

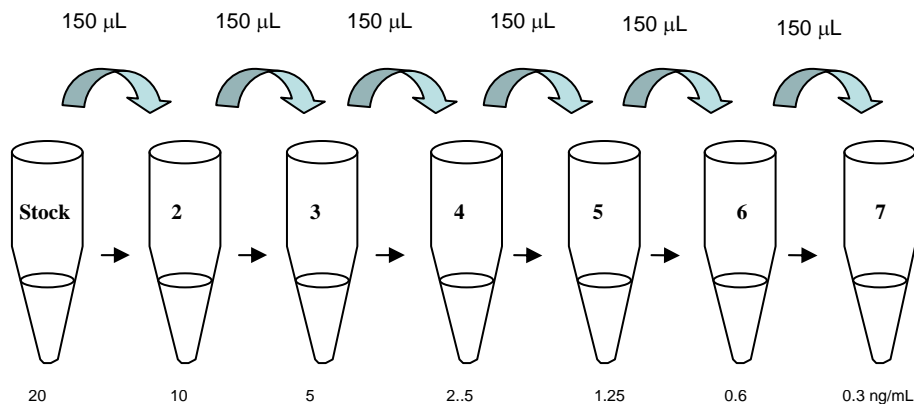
Dilute the anti-Rabbit IgG HRP Conjugate 100-fold with HRP Diluent immediately before use. Prepare 1 mL for each strip used.

### 3. Standard

**Note:** When opening lyophilized Standard, remove rubber stopper gently as the lyophilizate may have become dislodged during shipping.

Reconstitute the standard with the volume of ELISA Diluent specified on the vial label to give a concentration of  $20\text{ng/mL}$ . Gently swirl the vial and allow the vial to sit for 10 minutes to ensure the material is completely reconstituted. The standard should be reconstituted immediately before the assay. This stock material (tube #1) is then used to generate a standard curve. Any remaining standard can be stored at  $-80^{\circ}\text{C}$ . A suggested 2-fold dilution scheme is as follows:

- a) Label 7 test tubes #2-7 and "0 dose". Add  $150\ \mu\text{L}$  of the ELISA Diluent to tubes #2-7 and "0 dose".
- b) Add  $150\ \mu\text{L}$  of the stock Standard solution [ $20\ \text{ng/mL}$ ] to tube #2 and vortex. This is Standard tube #2 with a concentration of  $10\ \text{ng/mL}$ .
- c) Standards #3-7 are then prepared by performing a 2-fold serial dilution of the preceding standard. Refer to Fig. 1. For example, to make Standard #3, remove  $150\ \mu\text{L}$  of Standard #2 and add it to tube #3 and vortex and so on. Do not add any Standard to the "0 Dose" Standard tube.



**Figure 1: Recommended 2-fold Serial Dilution of Standard**

**Note:** The Standard curve can be set up with a different serial dilution scheme by making appropriate adjustments to the dilution pattern.

## VIII. ASSAY PROTOCOL

1. Prepare the reagents as described in the Reagent Preparation section.
2. Place the desired number of strips in the strip well plate holder. (Re-bag the extra strips and return unused strips to refrigerator for future use.)
3. Add either 50 µL of Standards 1 through 7 or the samples to wells of the plate. Add 50 µL of the zero dose to the control wells. It is recommended that standards and samples be run in at least duplicate.
4. Add 50 µL of the detection antibody to each well. Seal the plate and incubate at room temperature for 3 hours at room temperature (on shaker if possible).

*Note:* Do not add standard or sample lysate to wells reserved for TMB blanks.

*Note:* A standard curve must be generated with each assay.

### 5. IMPORTANT WASH STEP:

**Gently remove the plate sealer and wash the plate at least 4 times. A thorough washing of the plate is extremely important to reduce background. We recommend using a multi-channel pipette to fill each well with 250 µL of diluted Wash Buffer. Fluid removal from the wells is best accomplished by inverting the plate over a sink and flicking the fluid out of the wells and then blotting the plate on clean paper towels. Using the multichannel pipet add 250 µL of Wash Buffer to each well; flick and blot the plate. Repeat this procedure for a total of 4 times.**

*For users of automatic plate washers:* It is important to ensure that the wash apparatus is properly maintained and operating correctly. Tubing and tips can easily become clogged, leading to incomplete washing and inadequate aspiration of wells. The result may be poor precision and an unsuitable standard curve. For best results, we recommend at least 4 wash cycles.

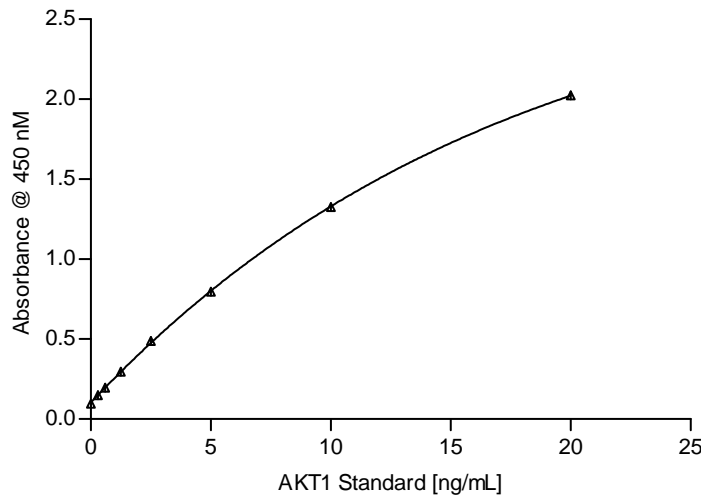
6. Add 100 µL of a 1:100 dilution of the anti-Rabbit IgG HRP Conjugate to each well. Cover the plate and incubate at room temperature for 30-45 minutes (on shaker with mild agitation if possible). Wash as described in Step 5. Remove all fluid from the wells and blot the wells dry.

7. Add 100  $\mu\text{L}$  of the TMB Solution to each well. Incubate at room temperature in the dark for 10 to 45 minutes, monitor the color development. Stop the reaction by adding 100  $\mu\text{L}$  of Stop Solution to each well. Immediately read the plate at 450 nm. Plate should be read within 1 hour of adding the stop solution.
8. The plate reader may be blanked against a TMB blank prepared by adding 100  $\mu\text{L}$  of stop solution to 100  $\mu\text{L}$  of the TMB solution.

**CAUTION:** *Bubbles in the wells will cause inaccurate readings. Ensure that all bubbles are removed prior to taking the absorbance reading.*

**NOTE:** *For very low starting protein levels, samples can be placed at 37°C during the final incubation to obtain greater sensitivity.*

## IX. CALCULATION OF RESULTS



**Figure 2. Typical AKT1 Standard Curve**  
**50  $\mu\text{L}$  of progressive 2 fold dilutions of the AKT1 standard included in the kit and run as described in the assay instructions.**

**NOTE:** This data is presented for reference use only and should not be used to interpret actual assay results. A standard curve must be generated for each assay.

---

## Warranty

**Millipore Corporation** (“Millipore”) warrants its products will meet their applicable published specifications when used in accordance with their applicable instructions for a period of one year from shipment of the products. **MILLIPORE MAKES NO OTHER WARRANTY, EXPRESSED OR IMPLIED. THERE IS NO WARRANTY OF MERCHANTABILITY OR FITNESS FOR A PARTICULAR PURPOSE.** The warranty provided herein and the data, specifications and descriptions of Millipore products appearing in Millipore’s published catalogues and product literature may not be altered except by express written agreement signed by an officer of Millipore. Representations, oral or written, which are inconsistent with this warranty or such publications are not authorized and if given, should not be relied upon.

In the event of a breach of the foregoing warranty, Millipore’s sole obligation shall be to repair or replace, at its option, the applicable product or part thereof, provided the customer notifies Millipore promptly of any such breach. If after exercising reasonable efforts, Millipore is unable to repair or replace the product or part, then Millipore shall refund to the Company all monies paid for such applicable Product. **MILLIPORE SHALL NOT BE LIABLE FOR CONSEQUENTIAL, INCIDENTAL, SPECIAL OR ANY OTHER DAMAGES RESULTING FROM ECONOMIC LOSS OR PROPERTY DAMAGE SUSTAINED BY ANY COMPANY CUSTOMER FROM THE USE OF ITS PRODUCTS.**

(c) 2008: Millipore Corporation. All rights reserved. No part of these works may be reproduced in any form without permission in writing