

Product Information

CompoZr® Disease Model Cell Lines DLD-1 Cells AKT1 -/-

Catalog Number **CLLS1132**

Storage Temperature -196 °C (liquid nitrogen)

Product Description

CompoZr® zinc finger nuclease (ZFN) technology is a fast and reliable way to manipulate the genome in a targeted fashion. ZFNs are synthetic proteins engineered to bind DNA at a sequence-specific location and create a double strand break (www.compozrzfn.com). The cell's natural machinery repairs the break in one of two ways: non-homologous end joining or homologous recombination. The non-homologous end joining pathway resulted in deletions at the AKT1 locus (see Figures 1a and 1b). Single cell knockout clones were isolated and followed for more than twenty passages to establish stable cell lines.

While the targeted gene in this cell line is diploid, ZFN-mediated gene knockout technology is not limited to diploid targets, allowing the researcher to pursue many of the polyploid cell lines often characteristic of cancer. Modified cell lines provide the basis for the development of various assays for compound screening. Here, the target gene and resulting protein are disrupted, in contrast to cell lines with normal expression.

AKT1 (v-akt murine thymoma viral oncogene homolog 1) is a serine/threonine kinase that acts downstream of phosphatidylinositol 3 kinase (PI3K) in response to growth factors such as platelet-derived growth factor (PDGF), epidermal growth factor (EGF), insulin, and insulin-like growth factor (IGF-1).^{1,2}

PI3K phosphorylates PIP₂ [phosphatidylinositol 3,4-bisphosphate, PtdIns (3,4) P₂] to form PIP₃ [phosphatidylinositol 3,4,5-triphosphate, PtdIns (3,4,5) P₃]. AKT contains a pleckstrin homology domain (PH) that binds PIP₃, thereby, localizing AKT to the membrane.^{3,4} AKT is phosphorylated and activated by PDK1. Once activated, AKT mediates antiapoptosis, cell survival, and proliferation through interactions with GSK3β, BAD, MDM2, p21, caspase 9, FOXO1A, FOXO3A, and mTOR.⁵⁻¹⁰

AKT1 is negatively regulated by the tumor suppressor protein, PTEN, which is frequently mutated in cancers, resulting in constitutive activation of AKT1.¹¹⁻¹³ In addition, ERBB2/ERBB3 receptor activity is frequently mutated in breast cancer resulting in enhanced PI3K and AKT1 activity.¹⁴ *In vivo* mouse models have conferred a role for AKT1 in tumor metastasis and cellular migration.¹⁵

AKT1 has also been shown to play a role in cell motility through up-regulation of matrix metalloproteinase activity.^{16,17} A recurrent somatic mutation of AKT1 (E17K) has been identified in a number of human malignancies including breast, lung, and colon cancer.¹⁸⁻²⁰ This mutation occurs in the PH domain of AKT1, thereby, localizing it to the membrane where it remains constitutively active. Enhanced kinase activity and concomitant localization to the membrane enhance cell survival and proliferation signaling, augmenting the oncogenicity of AKT1.²¹ Together, these reports suggest that AKT1 expression is capable of promoting tumor metastasis in various contexts underscoring the importance of this oncogenic target in breast cancer biology.

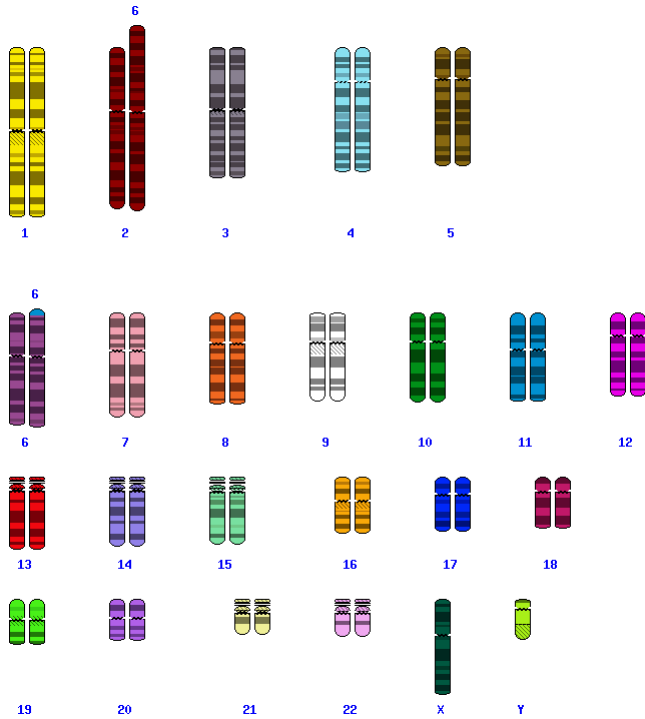
For further information and to download sequence of modified locus, go to the website:
www.wherebiobegins.com/biocells

Components

DLD-1 mutant cell line with AKT1 gene knocked out	1 vial
Catalog No. CLL1132	
Parental colon adenocarcinoma cell line (ATCC® Catalog No. CCL-221™)	1 vial
Catalog No. CLL0001	

Figure 1a.

Creation of AKT1 Knockout in DLD-1 Cells



AKT1 is diploid in DLD-1 cell line: location – 14q32.32
(from NCBI SKY/M-FISH database)

Figure 1b.

Site-specific deletion at the AKT1 Locus in the DLD-1 cell line:

Allele 1 – 2 bp deletion:

```
TCAGGCATCCCAGGCACATCTGTCCTGGCACACC
CAGTTCCTGCCTGGCTGCCTGGCGAGGGTCTGAC
GGGTAGAGTGTGCGTGGCTCTCACCACCCGCACG
TCTGTAGGGGAGTACATCAAGACCTGGCGGCCAC
GCTACTTCCTCCTCAAGAATGATTGGCACCTTCATT
GGctacaaGGAGCGGCCGCAGGATGTGGACCAACG
TGAGGCTCCCCTCAACAACCTTCTGTGGCGCGTA
AGTATCCCCTTGGCCTCTCGGGATTCAGATTTGGG
GGGTTGGCTGGAGCCCTCTTTGCCACCAGGCC
CACGATGGGGTCCCCTGGAGCCTCCAAGTCCTG
GGCTGGCAAGCAACAAGCACTGGCTGGGGTGGGG
GTCTCTGGGCCGA
```

Allele 2 – 8 bp deletion:

```
TCAGGCATCCCAGGCACATCTGTCCTGGCACACC
CAGTTCCTGCCTGGCTGCCTGGCGAGGGTCTGAC
GGGTAGAGTGTGCGTGGCTCTCACCACCCGCACG
TCTGTAGGGGAGTACATCAAGACCTGGCGGCCAC
GCTACTTCCTCCTCAAGAATGATTGGCACCTTCATT
GGctacaaGGAGCGGCCGCAGGATGTGGACCAACG
TGAGGCTCCCCTCAACAACCTTCTGTGGCGCGTA
AGTATCCCCTTGGCCTCTCGGGATTCAGATTTGGG
GGGTTGGCTGGAGCCCTCTTTGCCACCAGGCC
CACGATGGGGTCCCCTGGAGCCTCCAAGTCCTG
GGCTGGCAAGCAACAAGCACTGGCTGGGGTGGGG
GTCTCTGGGCCGA
```

Schematic of the genomic sequence at the target region (exon 3) recognized by the ZFN pair; the resulting deletion, and the CEL-I primer sequences:

CEL-I Primers: **Bolded and underlined**ZFN binding site - **UPPER CASE, BOLDED RED**ZFN cut site - **lower case red**Deletion - **yellow highlighted**

Genotype: del 2/del 8 (heterozygous)

Cell Line Description

1 vial of modified DLD-1 cells contains $\sim 2 \times 10^6$ cells.

Organism: *Homo sapiens* (human)

Tissue: adenocarcinoma; colorectal

Age: adult

Gender: Male

Ethnicity: Caucasian

Morphology: Epithelial

Growth properties: Adherent

DNA profile

Short Tandem Repeat (STR) analysis:

Amelogenin: X,y

CSF1PO: 11, 12

D13S317: 8, 11

D16S539: 12,13

D5S818: 13

D7S820: 10, 12

TH01: 7, 9.3

TPOX: 8, 11

vWA:18,19

Parental Cell Line: ATCC Catalog No. CCL-221

Note: Please see CCL-221 product datasheet from ATCC for additional information about the origin of these cell lines. Cytogenetic information is based on initial seed stock at Sigma Life Science. Cytogenetic instability has been reported in the literature for some cell lines.

Medium: Fetal bovine serum, Catalog No. F4135, at a final concentration of 10% (v/v) in RPMI, Catalog No. R5886, supplemented with L-glutamine (Catalog No. G7513) to a final concentration of 2 mM and sodium pyruvate at 1 mM final concentration (Catalog No. S8636). This medium is formulated for use with a 5% CO₂ in air.

The cryoprotectant medium used is 1× Cell Freezing Medium-DMSO, Catalog No. C6164.

Precautions and Disclaimer

This product is for R&D use only, not for drug, household, or other uses. Please consult the Material Safety Data Sheet for information regarding hazards and safe handling practices.

Biosafety Level: 1

This cell line is not known to harbor an agent known to cause disease in healthy adult humans. Handle as a potentially biohazardous material under at least Biosafety Level 1 containment. The parental cell line, A549, was obtained from ATCC. All animal products used in the preparation of the knockout line and maintenance of both, parental and knockout clone, have been screened negative by 9CFR for adventitious viral agents. Cell lines derived from primate lymphoid tissue may fall under the regulations of 29 CFR 1910.1030 Bloodborne Pathogens. Appropriate safety procedures are recommended to be used when handling all cell lines, especially those derived from human or other primate material. Detailed discussions of laboratory safety procedures have been published.²²⁻²⁵

Preparation Instructions

Complete Medium: To make the complete growth medium, add fetal bovine serum, Catalog No. F4135, to a final concentration of 10% (v/v) in the base medium, RPMI, Catalog No. R5886. The medium is supplemented with L-glutamine, Catalog No. G7513, to a final concentration of 2 mM and sodium pyruvate, Catalog No. S8636, to a final concentration of 1 mM. This medium is formulated for use with a 5% CO₂ in air atmosphere.

Storage/Stability

Upon receiving a shipment of frozen cells it is important the end user gives the shipment attention without delay. To ensure the highest level of viability, thaw the vial and initiate the culture as soon as possible upon receipt. If upon arrival, continued storage of the frozen culture is necessary, it should be stored in liquid nitrogen vapor phase and not at $-70\text{ }^{\circ}\text{C}$. Storage at $-70\text{ }^{\circ}\text{C}$ will result in loss of viability.

Precaution: It is recommended that protective gloves and clothing always be used, and a full face mask always be worn when handling frozen vials. It is **important to note that some vials leak when submersed in liquid nitrogen** and will slowly fill with liquid nitrogen. Upon thawing, the conversion of the liquid nitrogen back to the gas phase may result in the rapid expansion of the vessel, potentially blowing off its cap with dangerous force creating flying debris

At the time a cell line is ordered, end users should also consider the culture conditions for the new cell line and make sure the appropriate medium will be available when the cells arrive.

Procedure

Thawing of Frozen Cells

1. Thaw the vial by gentle agitation in a $37\text{ }^{\circ}\text{C}$ water bath. To reduce the possibility of contamination, keep the O-ring and cap out of the water. Thawing should be rapid (~ 2 minutes).
2. Remove the vial from the water bath as soon as the contents are thawed, and decontaminate by dipping in or spraying with 70% ethanol. All of the operations from this point on should be carried out under strict aseptic conditions.
3. Transfer the vial contents to a centrifuge tube containing 9.0 mL of Complete Medium and spin at $\sim 125 \times g$ for 5–7 minutes.
4. Resuspend cell pellet with the Complete Medium and dispense into a 25 cm^2 or a 75 cm^2 culture flask. It is important to avoid excessive alkalinity of the medium during recovery of the cells. It is suggested, prior to the addition of the vial contents, the culture vessel containing the Complete Medium be placed into the incubator for at least 15 minutes to allow the medium to reach its normal pH (7.0–7.6) and temperature ($37\text{ }^{\circ}\text{C}$).
5. Incubate the culture at $37\text{ }^{\circ}\text{C}$ in a suitable incubator. A 5% CO_2 in air atmosphere is recommended for the Complete Medium.

Subculturing Procedure

Volumes used in this procedure are for a 75 cm^2 flask; proportionally reduce or increase volume of dissociation medium for culture vessels of other sizes.

1. Remove and discard culture medium.
2. Briefly rinse the cell layer with Trypsin-EDTA solution (Catalog No. T3924)
3. Add 2.0–3.0 mL of Trypsin-EDTA solution to flask and incubate at $37\text{ }^{\circ}\text{C}$ for 10 minutes to detach the cells.
4. Add 6.0–8.0 mL of Complete Medium and aspirate cells by gentle pipetting.
5. Add appropriate aliquots of the cell suspension into new culture vessels.
Subcultivation Ratio: 1:3 to 1:6
6. Incubate cultures at $37\text{ }^{\circ}\text{C}$.

Note: More information on enzymatic dissociation and subculturing of cell lines is available in the literature.²⁶

References

1. Franke, T.F. et al., The protein kinase encoded by the Akt-proto-oncogene is a targets of the PDGF-activated phosphatidylinositol-kinase, *Cell*, **81**, 727-36 (1995).
2. Alessi, D.R. et al., Mechanism of activation of protein kinase B by insulin and IGF-1. *EMBO J.*, **15**(23), 6541-6551 (1996).
3. Franke, T.F. et al., Direct regulation of the Akt proto-oncogene product by phosphatidylinositol-3,4-bisphosphate. *Science*, **275**, 665-668 (1997).
4. Stephens, L. et al., Protein kinase B kinases that mediate phosphatidylinositol 3,4,5-triphosphate-dependent activation of protein kinase B. *Science*, **279**, 710-714 (1998).
5. Datta, S.R. et al., Cellular Survival: a play in three Akts. *Genes Dev.*, **13**(22), 2905-2927 (1999).
6. Hay, N., The Akt-mTOR tango and its relevance to cancer. *Cancer Cell*, **8**, 179-183 (2005).
7. Khwaja, A., Apoptosis: Akt is more than just a Bad kinase. *Nature*, **401**, 33-34 (1999).
8. Datta, S.R., Akt phosphorylation of BAD couples survival signals to the cell-intrinsic death machinery. *Cell*, **91**(2), 231-41 (1997).
9. Brunet, A. et al., Akt promotes cell survival by phosphorylating and inhibiting a forkhead transcription factor. *Cell*, **98**, 857-866 (1999).
10. Cardone, M.H. et al., Regulation of cell death protease caspase-9 by phosphorylation. *Science*, **282**, 1318-1321 (1998).
11. Stambolic, V. et al., Negative regulation of PKB/Akt-dependent cell survival by the tumor suppressor PTEN. *Cell*, **95**, 29-39 (1998).
12. Wu, X. et al., The PTEN/MMAC1 tumor suppressor phosphatase functions as a negative regulator of the phosphoinositide 3-kinase/Akt pathway. *Proc. Natl. Acad. Sci. USA*, **95**, 15587-15591 (1998).
13. Li, J. et al., PTEN, a putative protein tyrosine phosphatase gene mutated in human brain, breast and prostate cancer. *Science*, **275**, 1943-1947 (1997).
14. Zhou, B.P. et al., Cytoplasmic localization of p21^{Cip1/WAF1} by Akt-induced phosphorylation in *HER-2/neu*-overexpressing cells. *Nat. Cell Biol.*, **3**, 245-252 (2001).
15. Ju., X. et al., Akt1 governs breast cancer progression *in vivo*. *Proc. Natl. Acad. Sci. USA*, **104**, 7438-7443 (2007).
16. Kim, D. et al., Akt/PKB promotes cancer cell invasion via increased motility and metalloproteinase production. *The FASEB Journal*, **15**, 1953-1962 (2001).
17. Park, B.K. et al., Akt1 Induces Extracellular Matrix Invasion and Matrix Metalloproteinase-2 Activity in Mouse Mammary Epithelial Cells. *Cancer Res*, **61**, 7647-7653 (2001).
18. Do, H. et al., Detection of the transforming AKT1 mutation E17K in non-small cell lung cancer by high resolution melting. *BMC Res. Notes*, **1**, 14 (2008).
19. Bleeker, F.E. et al., AKT1^{E17K} in human solid tumours. *Oncogene*, **27**, 5648-50 (2008).
20. Melanga, D. et al., Activating E17K mutation in the gene encoding the protein kinase AKT1 in a subset of squamous cell carcinoma of the lung. *Cell Cycle*, **7**(5), 665-669 (2008).
21. Carpten, J.D. et al., A transforming mutation in the pleckstrin homology domain of AKT1 in cancer. *Nature*, **448**, 439-444 (2007).
22. Centers for Disease Control (1999), Biosafety in Microbiological and Biomedical Laboratories Human Health Service Publication No. (CDC) 93-8395. U.S. Dept. of Health and Human Services; 4th Edition U.S. Government Printing Office Washington D.C. The entire text is available online at www.cdc.gov/od/ohs/biosfty/bmbl4/bmbl4toc.htm
23. Fleming, D.O. et al., (1995) *Laboratory Safety: Principles and Practice*. Second edition, ASM press, Washington, DC.
24. Hay, R.J. et al., eds. (1992), *ATCC Quality Control Methods for Cell Lines*. 2nd edition, Published by ATCC.
25. Caputo, J.L., Biosafety procedures in cell culture. *J. Tissue Culture Methods*, **11**, 223-227 (1988).
26. Freshney, R.I., Chapter 10 in *Culture of Animal Cells, a manual of Basic Technique* by, 3rd edition, published by Alan R. Liss, (NY, NY: 1994).

Additional product and technical information can be obtained from the catalog references and the Sigma Life Science Website (www.wherebiobegins.com/biocells).

CompoZr is a registered trademark of Sigma-Aldrich® Biotechnology LP and Sigma-Aldrich Co.
ATCC is a registered trademark of American Type Culture Collection.
CCL-221 is a trademark of American Type Culture Collection.

Please see the enclosed Label License Agreement (LLA) for further details regarding the use of this product. The LLA is also available on our website at www.wherebiobegins.com/biocells

These cells are distributed for research purposes only. Sigma Life Science requires that individuals contemplating commercial use of any cell line first contact us to negotiate an agreement. Third party distribution of this cell line is prohibited.

ADM,GW,MAM 06/11-1

Sigma brand products are sold through Sigma-Aldrich, Inc.

Sigma-Aldrich, Inc. warrants that its products conform to the information contained in this and other Sigma-Aldrich publications. Purchaser must determine the suitability of the product(s) for their particular use. Additional terms and conditions may apply. Please see reverse side of the invoice or packing slip.