

# CFTE29o- Human Cystic Fibrosis Tracheal Epithelial Cell Line

Immortalized Cell Line

Cat. # SCC162

FOR RESEARCH USE ONLY.  
NOT FOR USE IN DIAGNOSTIC PROCEDURES.  
NOT FOR HUMAN OR ANIMAL CONSUMPTION.  
THIS PRODUCT CONTAINS GENETICALLY MODIFIED ORGANISMS.

Pack size:  $\geq 1 \times 10^6$   
viable cells/vial

Store in liquid nitrogen



Data Sheet

page 1 of 4

## Background

Cystic Fibrosis (CF) is a lethal autosomal recessive disease caused by mutations in the CF transmembrane conductance regulator (CFTR) gene which functions as a cAMP-activated and phosphorylated-regulated Cl channel. The predominant mutation in the CFTR gene is a trinucleotide deletion that results in loss of a phenylalanine at amino acids 508 ( $\Delta F508$ ) in the CFTR protein. This mutation accounts for ~66% of all CF alleles<sup>1</sup>.

CFTE29o- is a human CF tracheal epithelial cell line, derived from a 21-yr old male CF patient homozygous for the  $\Delta F508$  CFTR mutation and immortalized with the origin-of-replication defective SV40 plasmid (pSVori-)<sup>1</sup>. The cell line express keratin, indicating an epithelial cell origin, along with a calcium-dependent cell adhesion protein, cellCAM 120/80<sup>1</sup>, and ZO-1 indicating the ability to form tight junctions. CFTE29o- displays ion transport properties characteristic of cystic fibrosis such as defective cAMP-dependent chloride transport. Upon treatment with the calcium ionophore, ionomycin, CFTE29o- secretes chloride, albeit at reduced levels relative to normal cells. The cells express CFTR mRNA, and small amounts of CFTR protein as assessed by Western blot hybridization<sup>1</sup>. Karyotype analysis indicates that 70% of the cells contain two copies of chromosome 7<sup>1</sup>.

CFTE29o- is a useful model for cystic fibrosis and for studying chloride ion transport and ion transport in human airways. The cells are useful for testing candidate chemotherapeutic drugs for their potential as treatments for ameliorating CF pathologies.

## Short tandem repeat (STR) Profile

|                  |                 |
|------------------|-----------------|
| D3S1358: 15, 16  | D16S539: 10, 12 |
| TH01: 7, 9       | CSF1PO: 10, 13  |
| D21S11: 28, 31.2 | Penta D: 10, 12 |
| D18S51: 14       | vWA: 17         |
| Penta E: 7, 12   | D8S1179: 15     |
| D5S818: 11, 12   | TPOX: 8, 11     |
| D13S317: 9, 11   | FGA: 24, 26     |
| D7S820: 10, 11   | Amelogenin: X   |

Immortalized cell lines are inherently genetically unstable. Genetic instability may arise in the form of loss of heterozygosity of alleles at one or more genetic sites with increased passages.

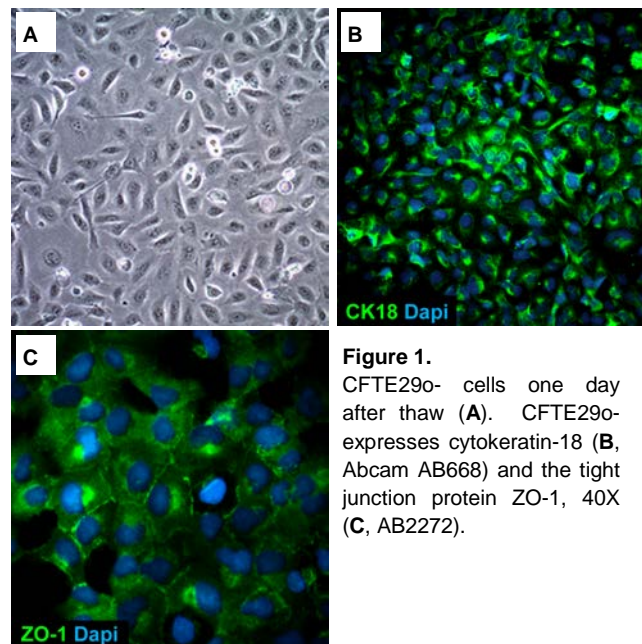
## Quality Control Testing

- Each vial contains  $\geq 1 \times 10^6$  viable cells.
- Cells are tested by PCR and are negative for HPV-16, HPV-18, Hepatitis A, C, and HIV-1 & 2 viruses as assessed by a Human Essential CLEAR panel by Charles River Animal Diagnostic Services.
- Cells are negative for mycoplasma contamination.
- Each lot of cells is genotyped by STR analysis to verify the unique identity of the cell line.

## Storage and Handling

CFTE29o- Human Cystic Fibrosis Tracheal Epithelial Cell Line should be stored in liquid nitrogen. The cells can be cultured for at least 10 passages after initial thawing without significantly affecting the cell marker expression and functionality.

## Representative Data



**Figure 1.** CFTE29o- cells one day after thaw (A). CFTE29o- expresses cytokeratin-18 (B, Abcam AB668) and the tight junction protein ZO-1, 40X (C, AB2272).

Please visit [www.millipore.com](http://www.millipore.com) for additional product information and references.

Submit your published journal article, and earn credit toward future purchases. Visit [www.millipore.com/publicationrewards](http://www.millipore.com/publicationrewards) to learn more!

## Protocols

### Fibronectin/Collagen/BSA ECM Coating of Flasks

1. Make stock solutions of the following:
  - a) Human Fibronectin Stock (0.5 mg/mL): Add 10 mL of  $\alpha$ -MEM (Sigma M2279) to the glass vial containing human fibronectin (Sigma F2006-5MG).
  - b) BSA, Fraction V Stock (1 mg/mL): Weigh out 200 mg BSA (Cat. No. 126575) into a 50-mL conical tube. Resuspend BSA in 200 mL 1X PBS or 1X HBS. Sterile filter using a 0.22  $\mu$ m SteriCup (Cat. No. SCGPU02RE).
  - c) PureCol Collagen Stock (3 mg/mL): Add 5 mL of sterile 0.01N HCL to 15 mg lyophilized collagen (Sigma 5006-15MG).
2. Prepare Fibronectin/Collagen/BSA ECM Mixture.

| Component                           | Quantity | Final Conc.    | Supplier      | Cat #     |
|-------------------------------------|----------|----------------|---------------|-----------|
| Human Fibronectin Stock (0.5 mg/mL) | 2 mL     | 10 $\mu$ g/mL  | Sigma         | F2006-5MG |
| BSA, Fraction V Stock (1 mg/mL)     | 10 mL    | 100 $\mu$ g/mL | EMD Millipore | 126575    |
| PureCol (3 mg/mL)                   | 1 mL     | 30 $\mu$ g/mL  | Sigma         | 5006-15MG |
| $\alpha$ -MEM Medium                | 87 mL    | NA             | Sigma         | M2279     |

3. Sterile filter using a 0.22  $\mu$ m SteriCup (Cat. No. SCGPU02RE). Label and store at 2-8°C when not in use.
4. Coat flasks with the Fibronectin/Collagen/BSA ECM mixture (3 mL for T25, 6 mL for T75 or 15 mL for T225 flasks). Distribute ECM mixture evenly over growth surfaces by swirling. Incubate flasks at room temperature in the hood for at least 2 hours, but no more than 24 hours.
5. Drain coating solution by standing flasks upright for 1-2 minutes. Aspirate. Coated flasks may be stored at room temperature for up to 1 month.
6. Do not rinse flask before use.

### Thawing Cells

1. Do not thaw the cells until the recommended medium and ECM coated flasks are on hand.  
Cells are thawed and expanded in  $\alpha$ -MEM (Sigma Cat. No. M2279), 10% FBS (Cat. No. ES-009-B) and 2 mM L-Glutamine (Cat. No. TMS-002-C) and 1X Penicillin-Streptomycin Solution (Cat. No. TMS-AB2-C) (optional).
2. Remove the vial of frozen CFTE290- cells from liquid nitrogen and incubate in a 37°C water bath. Closely monitor until the cells are completely thawed. Maximum cell viability is dependent on the rapid and complete thawing of frozen cells.  
**IMPORTANT: Do not vortex the cells.**
3. As soon as the cells are completely thawed, disinfect the outside of the vial with 70% ethanol. Proceed immediately to the next step.
4. In a laminar flow hood, use a 1 or 2 mL pipette to transfer the cells to a sterile 15 mL conical tube. Be careful not to introduce any bubbles during the transfer process.
5. Using a 10 mL pipette, slowly add dropwise 9 mL of CFTE290- Expansion Medium (Step 1 above) to the 15 mL conical tube.  
**IMPORTANT: Do not add the entire volume of media all at once to the cells. This may result in decreased cell viability due to osmotic shock.**
6. Gently mix the cell suspension by slowly pipetting up and down twice. Be careful not to introduce any bubbles.  
**IMPORTANT: Do not vortex the cells.**
7. Centrifuge the tube at 300 x g for 2-3 minutes to pellet the cells.
8. Decant as much of the supernatant as possible. Steps 5-8 are necessary to remove residual cryopreservative (DMSO).
9. Resuspend the cells in 10 -15 mL of CFTE290- Expansion Medium.

## CFTE290- Human Cystic Fibrosis Tracheal Epithelial Cell Line

Cat # SCC162

10. Transfer the cell mixture to an ECM-coated T75 tissue culture flask.
11. Incubate the cells at 37°C in a humidified incubator with 5% CO<sub>2</sub>.
12. The next day, exchange the medium with 10-15 mL of fresh CFTE290- Expansion Medium. Exchange with fresh medium every other day.

### Cell Passage

**Note: It is absolutely critical to use Sigma T3924 Trypsin-EDTA solution.** Do not attempt to make your own Trypsin dilution from other sources as it will not work well for the cells. Cells are tightly adherent. **Do not use Accutase or AccuMAX as these are insufficient to detach the cells.**

1. Cells are ready to be passage when they reach 90 – 95% confluency.
2. Rinse flask twice with 10 – 15 mL 1X PBS w/o Ca<sup>2+</sup>, Mg<sup>2+</sup> (Cat. No. BSS-1006-B). Aspirate after each rinse. **Note:** Be sure to rinse twice to remove residual FBS as cells are very tightly adherent.
3. Add 10 mL Trypsin-EDTA solution (Sigma T3924) to the T75 flask. Swirl the flask to ensure that the Trypsin-EDTA completely covers the surface of the flask.
4. Incubate in 37°C incubator for **7-8** minutes.
5. After 7-8 minutes, take the flask out and for the next 3 minutes, tap firmly on the sides of the flask to dislodge the cells. Total trypsin incubation time = 10 minutes. **Do not incubate longer than 10 minutes total.**
6. Transfer the dissociated cells to a 50 mL conical tube. Add 15 mL CFTE290- Expansion Medium to the flask to inactivate the trypsin and collect residual cells.
7. Centrifuge at 800-1000 rpm for 3-5 minutes.
8. After centrifugation, discard the supernatant and resuspend the cell pellet in appropriate volume for cell counting.
9. Cells may be passaged using a 1:6 split ratio into the appropriate ECM coated flasks.

### Cryopreservation of Cells

CFTE290- Human Cystic Fibrosis Tracheal Epithelial Cell Line may be frozen in the expansion medium plus 10% DMSO using a Nalgene slow freeze Mr. Frosty container.

### References

1. Kunzelmann K, Schwiebert EM, Zeitlin PL, Kuo WL, Stanton BA, Gruenert DC. (1993) An immortalized cystic fibrosis tracheal epithelial cell line homozygous for the delta F508 CFTR mutation. *Am J Respir Cell Mol Bio* 8(5): 522-529.

■ antibodies ■ Multiplex products ■ biotools ■ cell culture ■ enzymes ■ kits ■ proteins/peptides ■ siRNA/cDNA products

Please visit [www.millipore.com](http://www.millipore.com) for additional product information, test data and references

EMD Millipore Corporation, 28820 Single Oak Drive, Temecula, CA 92590, USA 1-800-437-7500

Technical Support: T: 1-800-MILLIPORE (1-800-645-5476) • F: 1-800-437-7502

**FOR RESEARCH USE ONLY.** Not for use in diagnostic procedures. Not for human or animal consumption. Purchase of this Product does not include any right to resell or transfer, either as a stand-alone product or as a component of another product. Any use of this Product for purposes other than research is strictly prohibited.

EMD Millipore®, the M mark, Upstate®, Chemicon®, Linco® and all other registered trademarks, unless specifically identified above in the text as belonging to a third party, are owned by Merck KGaA, Darmstadt, Germany. Copyright ©2008-2018 Merck KGaA, Darmstadt, Germany. All rights reserved.



We Buy 100% Certified Renewable Energy

**ACADEMIC USE AGREEMENT**  
(subject to local law)

**THIS PRODUCT MAY ONLY BE USED BY INDIVIDUALS EMPLOYED BY AN ACADEMIC INSTITUTION AND IS INTENDED SOLELY TO BE USED FOR ACADEMIC RESEARCH, WHICH IS FURTHER DEFINED BELOW. BY OPENING THIS PRODUCT, YOU (“PURCHASER”) HEREBY REPRESENT THAT YOU HAVE THE RIGHT AND AUTHORITY TO LEGALLY BIND YOURSELF AND/OR YOUR EMPLOYER INSTITUTION, AS APPLICABLE, AND CONSENT TO BE LEGALLY BOUND BY THE TERMS OF THIS ACADEMIC USE AGREEMENT. IF YOU DO NOT AGREE TO COMPLY WITH THESE TERMS, YOU MAY NOT OPEN OR USE THE PRODUCT AND YOU MUST CALL MILLIPORESIGMA (“SELLER”) CUSTOMER SERVICE (1-800-645-5476) TO ARRANGE TO RETURN THE PRODUCT FOR A REFUND.**

“Product” means CFTE290- Human Cystic Fibrosis Tracheal Epithelial Cell Line (SCC162)

“Academic Research” means any internal *in vitro* research use by individuals employed by an academic institution. Academic Research specifically excludes the following uses of whatever kind or nature:

- Re-engineering or copying the Product
- Making derivatives, modifications, or functional equivalents of the Product
- Obtaining patents or other intellectual property rights claiming use of the Product
- Using the Product in the development, testing, or manufacture of a Commercial Product
- Using the Product as a component of a Commercial Product
- Reselling or licensing the Product
- Using the Product in clinical or therapeutic applications including producing materials for clinical trials
- Administering the Product to humans
- Using the Product in collaboration with a commercial or non-academic entity

“Commercial Product” means any product intended for: (i) current or future sale; (ii) use in a fee-for-service; or (iii) any diagnostic, clinical, or therapeutic use.

Access to the Product is limited solely to those officers, employees, and students of PURCHASER’s academic institution who need access to the Product to perform Academic Research. PURCHASER shall comply with all applicable laws in its use and handling of the Product and shall keep it under reasonably safe and secure conditions to prevent unauthorized use or access.

These use restrictions will remain in effect for as long as PURCHASER possesses the Product.

**COMMERCIAL OR NON-ACADEMIC ENTITIES INTERESTED IN PURCHASING OR USING THE PRODUCT MUST CONTACT [licensing@emdmillipore.com](mailto:licensing@emdmillipore.com) AND AGREE TO SEPARATE TERMS OF USE PRIOR TO USE OR PURCHASE.**

**GMO**

This product contains genetically modified organisms.  
Este producto contiene organismos genéticamente modificados.  
Questo prodotto contiene degli organismi geneticamente modificati.  
Dieses Produkt enthält genetisch modifizierte Organismen.  
Ce produit contient des organismes génétiquement modifiés.  
Dit product bevat genetisch gewijzigde organismen.  
Tämä tuote sisältää geneettisesti muutettuja organismeja.  
Denna produkt innehåller genetiskt ändrade organismer.

■ antibodies ■ Multiplex products ■ biotools ■ cell culture ■ enzymes ■ kits ■ proteins/peptides ■ siRNA/cDNA products

Please visit [www.millipore.com](http://www.millipore.com) for additional product information, test data and references

EMD Millipore Corporation, 28820 Single Oak Drive, Temecula, CA 92590, USA 1-800-437-7500

Technical Support: T: 1-800-MILLIPORE (1-800-645-5476) • F: 1-800-437-7502

FOR RESEARCH USE ONLY. Not for use in diagnostic procedures. Not for human or animal consumption. Purchase of this Product does not include any right to resell or transfer, either as a stand-alone product or as a component of another product. Any use of this Product for purposes other than research is strictly prohibited.

EMD Millipore®, the M mark, Upstate®, Chemicon®, Linco® and all other registered trademarks, unless specifically identified above in the text as belonging to a third party, are owned by Merck KGaA, Darmstadt, Germany. Copyright ©2008-2018 Merck KGaA, Darmstadt, Germany. All rights reserved.



We Buy 100% Certified Renewable Energy