

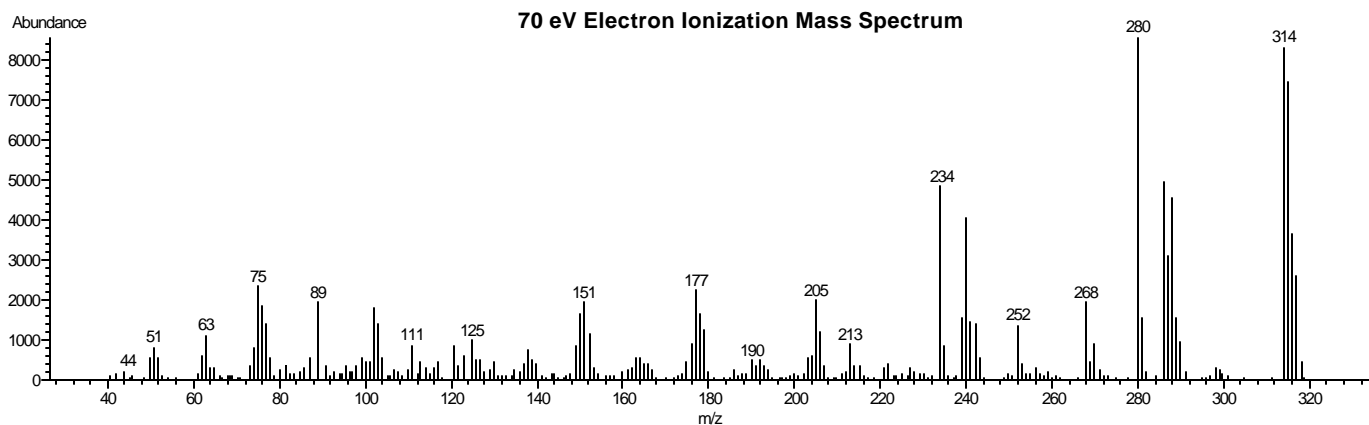
## Product Information

### CLONAZEPAM

Methanol Solution

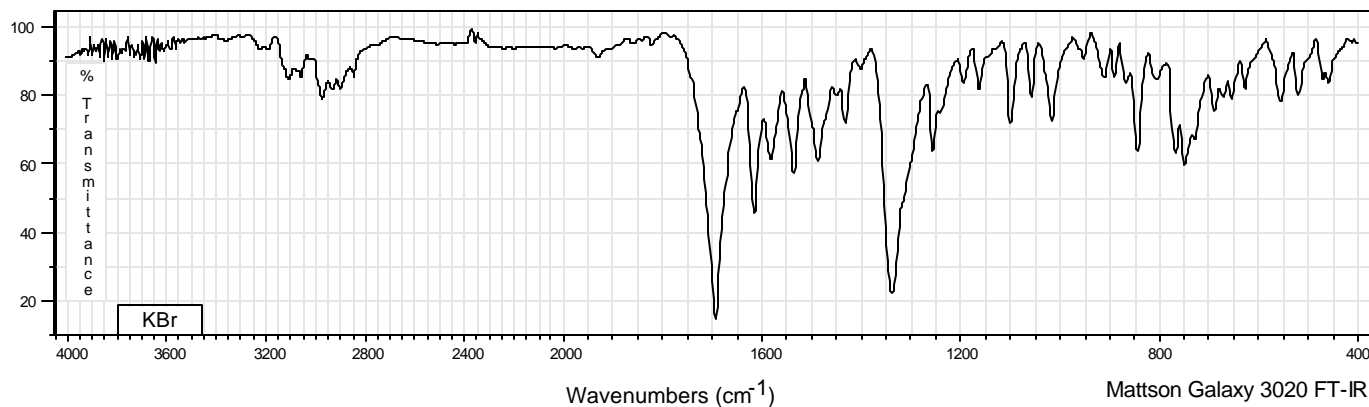
**Product Number** C4404  
**Lot Number** 101K88131  
**CAS Number** [1622-61-3]  
**Concentration** 1.04 mg Clonazepam/mL GC grade methanol (conc. verified by UV)  
**Molecular Formula** C<sub>15</sub>H<sub>10</sub>ClN<sub>3</sub>O<sub>3</sub>  
**Molecular Weight** 315.7  
**DEA Class** Exempt preparation of Class IV

**Synonyms** 5-(o-Chlorophenyl)-13-dihydro-7-nitro-2H-1 $\beta$ -benzodiazepin-2-one  
**Stability** If stored at 2-8 °C in an air tight container, protected from light, decomposition of the product is less than 1% in 12 months. After opening, concentration may change due to loss of solvent.  
**Expiration Date** March 2006  
**Storage** 2-8 °C; After opening, transfer contents to small vial provided for your convenience.



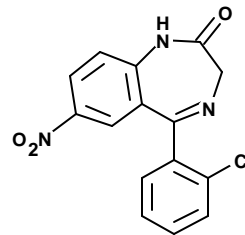
Hewlett-Packard 5890 Series II Gas Chromatograph  
Hewlett-Packard 5971 Mass Selective Detector  
Hewlett-Packard G1034C MS ChemStation (HP-DOS series)

### FT-IR

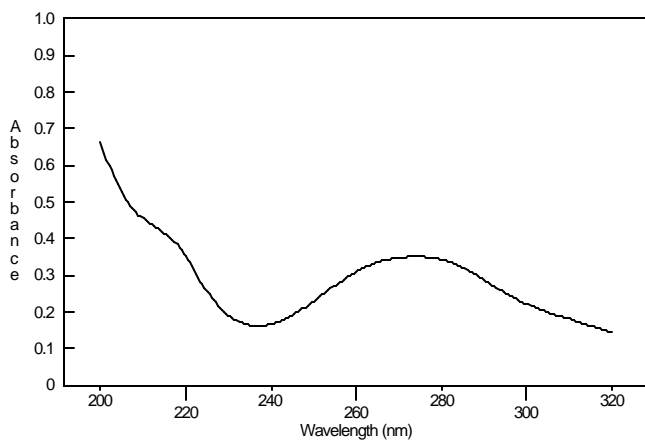


**CLONAZEPAM**

Methanol Solution

**Product Number** C4404**Lot Number** 101K88131**Ultraviolet Spectrum**

**Peak** 273.5 nm  
**Absorbance** 0.350  
**Solvent** 0.2 N H<sub>2</sub>SO<sub>4</sub>  
**Dilution** 1 : 199 (v/v)



Bio-Tek Uvikon XL

**Capillary Gas Chromatography**

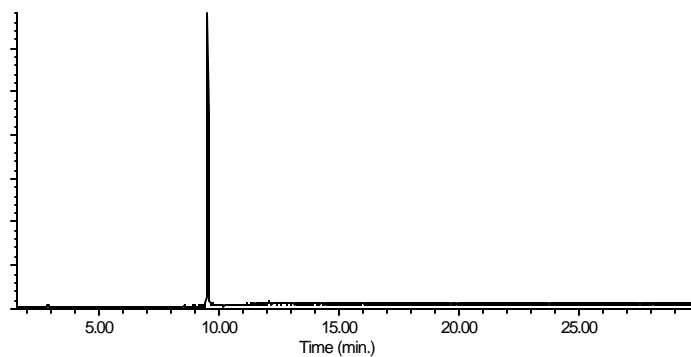
**Column** Supelco SPB-1 (Cat. No. 2-4162)  
**I.D.** 0.20 mm **Length** 15 m  
**Film Thickness** 0.20 μm  
**Oven Temperature**

150 °C (2 min.), then 15°/min. to  
300 °C, hold 18 min.

**Injector Temperature** 250 °C, Split

**Detector** Hewlett-Packard 5971

Mass Selective Detector (70 eV, 40-500 m/z)

Hewlett-Packard  
5890

C 4404/101K88131/9/22/03

This product is not for *in vitro* diagnostic procedures. For R&D use only. Not for drug, household or other uses.

Sigma brand products are sold through Sigma-Aldrich, Inc.

Sigma-Aldrich, Inc. warrants that its products conform to the information contained in this and other Sigma-Aldrich publications.

Purchaser must determine the suitability of the product(s) for their particular use. Additional terms and conditions may apply.

Please see reverse side of the invoice or packing slip.