



SIGMA-ALDRICH

3050 Spruce Street
Saint Louis, Missouri 63103 USA
Telephone 800-325-5832 • (314) 771-5765
Fax (314) 286-7828
email: techserv@sial.com
sigma-aldrich.com

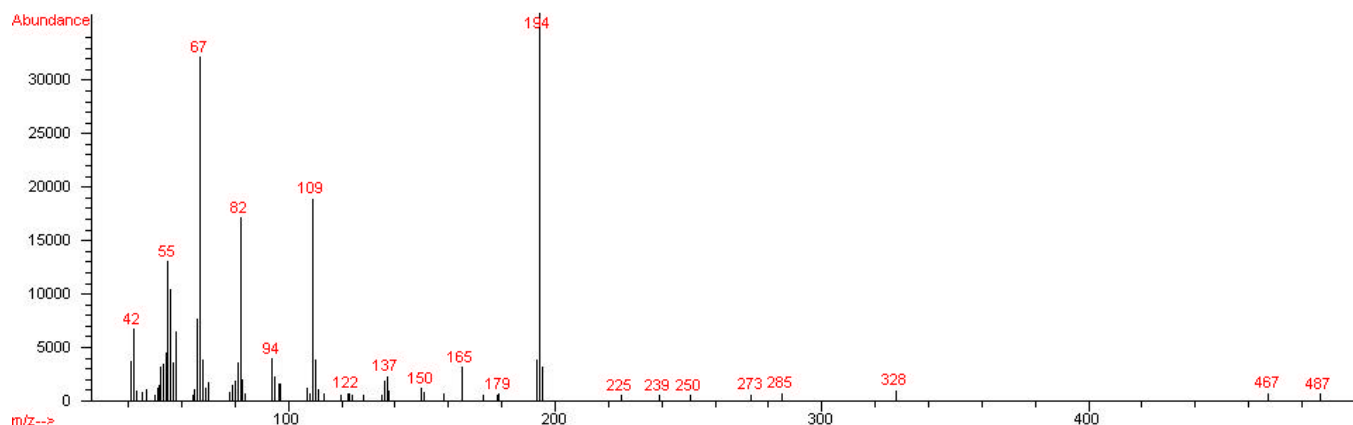
Product Information

CAFFEINE

Methanol Solution

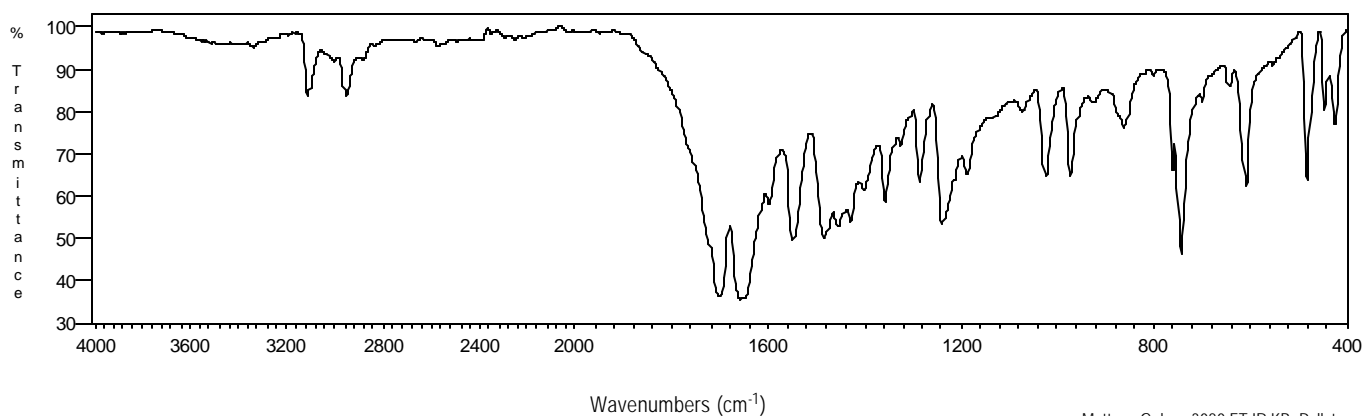
Product Number	C 6035	Synonyms	Coffeinum; Guaranine; Methyltheobromine
Lot Number	016K8806	Stability	If stored at 2-8°C in an air tight container, protected from light, decomposition of the product is less than 1% in 48 months. After opening, concentration may change due to loss of solvent.
CAS Number	[58-08-2]	Expiration Date	December 2010
Concentration	1.02 mg Caffeine/mL GC grade methanol (conc. verified by UV)	Storage	2-8°C.
Molecular Formula	$C_8H_{10}N_4O_2$		
Molecular Weight	194.2		
DEA Class	Formulation of a non controlled substance		

70 eV Electron Ionization Mass Spectrum



Hewlett-Packard 5890 Series II Gas Chromatograph
Hewlett-Packard 5971 Mass Selective Detector
Hewlett-Packard G1034C MS ChemStation (HP-DOS series)

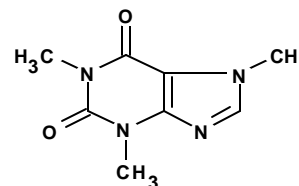
FT-IR



Mattson Galaxy 3020 FT-IR KBr Pellet

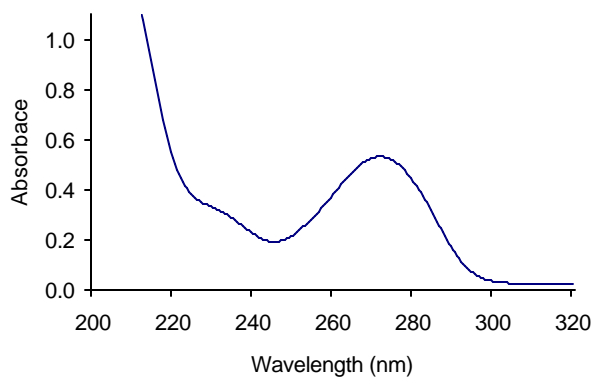
CAFFEINE

Methanol Solution
Product Number C 6035
Lot Number 016K8806



Ultraviolet Spectrum

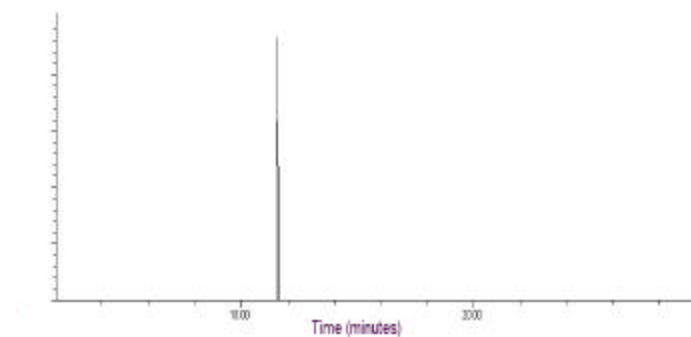
Peak	271.5 nm
Absorbance	0.531
Solvent	0.2 N H ₂ SO ₄
Dilution	1:99 (v/v)



Bio-Tek Uvikon XL

Capillary Gas Chromatography

Column Supelco SPB-1 (Cat. No. 2-4162)
I.D. 0.20 mm **Length** 15 m **Film Thickness** 0.20 μm
Oven Temperature 50°C (2 min.), then 15°/min. to 300°C, hold 11 min.
Injector Temperature 250°C, Split
Detector Hewlett-Packard 5971
Mass Selective Detector (70 eV, 40-500 m/z)



Hewlett-Packard 5890

C 6035/016K8806/02/28/06

This product is not for *in vitro* diagnostic procedures. For R&D use only. Not for drug, household or other uses.

Sigma brand products are sold through Sigma-Aldrich, Inc.

Sigma-Aldrich, Inc. warrants that its products conform to the information contained in this and other Sigma-Aldrich publications.

Purchaser must determine the suitability of the product(s) for their particular use. Additional terms and conditions may apply.

Please see reverse side of the invoice or packing slip.