



3050 Spruce Street  
Saint Louis, Missouri 63103 USA  
Telephone (800) 325-5832 (314) 771-5765  
Fax (314) 286-7828  
email: techserv@sial.com  
sigma-aldrich.com

## Product Information

### PROGESTERONE SIGMA REFERENCE STANDARD

Product No. **P9776**

Lot No: 115K88171

CAS No: 57-83-0

Storage Temperature: room temperature

Synonyms: Pregn-4-ene-3,20-dione

Formula:  $C_{21}H_{30}O_2$

Formula Weight: 314.47

#### Product Description

This product meets USP specifications (Current through USP 29, 1<sup>st</sup> Supplement), and is traceable to USP Reference Standard lot I0D373

Store in sealed vial at room temperature. Protect from light. Dry a portion over silica gel for 4 hours before using. Use promptly. Discard unused material.

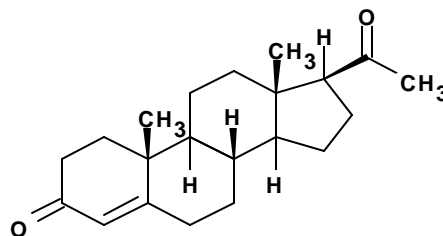
TEST	USP 29 SPECIFICATIONS	Result : Sigma R.S. Lot 115K88171
Infrared absorption spectrum KBr dispersion (197K)	compares to standard	conforms to USP RS lot I0D373
Ultraviolet absorption spectrum 10 µg/mL (197U)	compares to standard	conforms to USP RS lot I0D373
Melting range (741)	between 126° and 131°	129°- 131°
Specific rotation, $[\alpha]_D^{25}$ 20 mg/mL, in dioxane (781)	between + 175° and + 183°	+178.4°
Loss on drying (731)	not more than 0.5%	Passes
Assay — high pressure liquid chromatography (621)	not less than 97.0% and not more than 103.0%	101.5%

See reverse side for IR and UV spectrum of Sigma Reference Standard.

**PROGESTERONE**  
**SIGMA REFERENCE STANDARD**

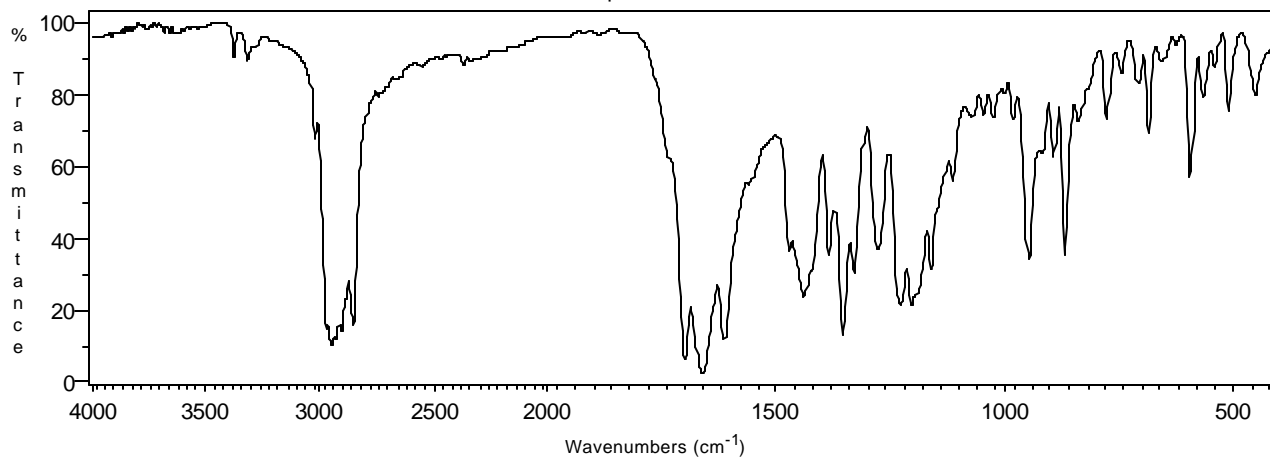
Product No. **P9776**

Lot 115K88171



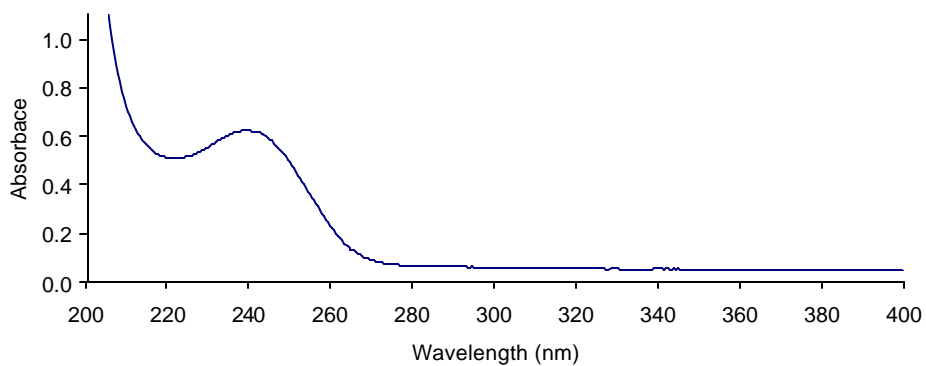
INFRARED SPECTRUM

KBr dispersion



ULTRAVIOLET SPECTRUM

10.00 µg/ml in Methanol



5/2006

Sigma brand products are sold through Sigma-Aldrich, Inc.  
Sigma-Aldrich, Inc. warrants that its products conform to the information contained in this and other Sigma-Aldrich publications.  
Purchaser must determine the suitability of the product(s) for their particular use. This product is not for *In Vitro* Diagnostic use.  
Additional terms and conditions may apply. Please see reverse side of the invoice or packing slip.