

## Product Information

**MST1, active, GST-tagged, human  
PRECISIO® Kinase  
recombinant, expressed in Sf9 cells**

Catalog Number **M9697**  
Lot Number SLBB3277V  
Storage Temperature  $-70\text{ }^{\circ}\text{C}$

Synonyms: KRS2, YSK3, DKFZp686A2068

### Product Description

MST1 belongs to a family of proteins that share similarity with a budding yeast serine/threonine kinase, sterile-20 (Ste20). Endogenous full-length MST1 is activated by a variety of stressful stimuli, accompanied by the secondary appearance of a 36 kDa Thr<sup>183</sup>-phosphorylated, caspase-cleaved catalytic fragment.<sup>1</sup> Recombinant MST1 undergoes a robust autoactivation *in vitro*, mediated by an intramolecular autophosphorylation on the activation loop of an MST dimer. MST1 can initiate apoptosis when transiently overexpressed in mammalian cells. Interference with the ability of endogenous MST1 to associate with the putative tumor suppressor proteins Nore1/RASSF can inhibit Ras-induced apoptosis.<sup>2</sup>

This recombinant product was expressed by baculovirus in Sf9 insect cells using an N-terminal GST-tag. The gene accession number is NM 006282. It is supplied in 50 mM Tris-HCl, pH 7.5, with 150 mM NaCl, 0.25 mM DTT, 0.1 mM EGTA, 0.1 mM EDTA, 0.1 mM PMSF, and 25% glycerol.

Molecular mass: ~83 kDa

Purity:  $\geq 70\%$  (SDS-PAGE, see Figure 1)

Specific Activity: 952–1,288 nmole/min/mg (see Figure 2)

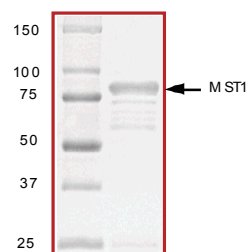
### Precautions and Disclaimer

This product is for R&D use only, not for drug, household, or other uses. Please consult the Material Safety Data Sheet for information regarding hazards and safe handling practices.

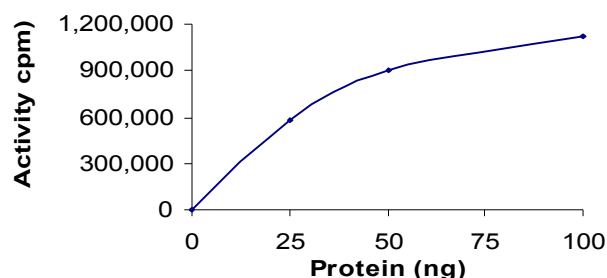
### Storage/Stability

The product ships on dry ice and storage at  $-70\text{ }^{\circ}\text{C}$  is recommended. After opening, aliquot into smaller quantities and store at  $-70\text{ }^{\circ}\text{C}$ . Avoid repeated handling and multiple freeze/thaw cycles.

**Figure 1.**  
SDS-PAGE Gel of Lot Number SLBB3277V:  
>85% (densitometry)



**Figure 2.**  
Specific Activity of Lot Number SLBB3277V:  
1,120 nmole/min/mg



### Procedure

#### Preparation Instructions

Kinase Assay Buffer – 25 mM MOPS, pH 7.2, 12.5 mM glycerol 2-phosphate, 25 mM MgCl<sub>2</sub>, 5 mM EGTA, and 2 mM EDTA. Just prior to use, add DTT to a final concentration of 0.25 mM.

Kinase Dilution Buffer – Dilute the Kinase Assay Buffer 5-fold with a 50 ng/μl BSA solution.

Kinase Solution – Dilute the active MST1 (0.1 µg/µl) with Kinase Dilution Buffer to the desired concentration. **Note:** The lot-specific specific activity plot may be used as a guideline (see Figure 2). It is recommended the researcher perform a serial dilution of active MST1 kinase for optimal results.

10 mM ATP Stock Solution – Dissolve 55 mg of ATP in 10 ml of Kinase Assay Buffer. Store in 200 µl aliquots at –20 °C.

γ-<sup>32</sup>P-ATP Assay Cocktail (250 µM) – Combine 5.75 ml of Kinase Assay Buffer, 150 µl of 10 mM ATP Stock Solution, 100 µl of γ-<sup>32</sup>P-ATP (1 mCi/100 µl). Store in 1 ml aliquots at –20 °C.

Substrate Solution – Dissolve Axtide (KKSRRGDYMTMQIG) in water at a final concentration of 1 mg/ml.

1% phosphoric acid solution – Dilute 10 ml of concentrated phosphoric acid to a final volume of 1 L with water.

#### Kinase Assay

This assay involves the use of the <sup>32</sup>P radioisotope. All institutional guidelines regarding the use of radioisotopes should be followed.

1. Thaw the active MST1, Kinase Assay Buffer, Substrate Solution, and Kinase Dilution Buffer on ice. The γ-<sup>32</sup>P-ATP Assay Cocktail may be thawed at room temperature.
2. In a pre-cooled microcentrifuge tube, add the following solutions to a volume of 20 µl:
  - 10 µl of Kinase Solution
  - 10 µl of Substrate Solution
3. Set up a blank control as outlined in step 2, substituting 10 µl of cold water (4 °C) for the Substrate Solution.
4. Initiate each reaction with the addition of 5 µl of the γ-<sup>32</sup>P-ATP Assay Cocktail, bringing the final reaction volume to 25 µl. Incubate the mixture in a water bath at 30 °C for 15 minutes.
5. After the 15 minute incubation, stop the reaction by spotting 20 µl of the reaction mixture onto an individually pre-cut strip of phosphocellulose P81 paper.

6. Air dry the pre-cut P81 strip and sequentially wash in the 1% phosphoric acid solution with constant gentle stirring. It is recommended the strips be washed a total of 3 times of ~10 minutes each.
7. Set up a radioactive control to measure the total γ-<sup>32</sup>P-ATP counts introduced into the reaction. Spot 5 µl of the γ-<sup>32</sup>P-ATP Assay Cocktail on a pre-cut P81 strip. Dry the sample for 2 minutes and read the counts. Do not wash this sample.
8. Count the radioactivity on the P81 paper in the presence of scintillation fluid in a scintillation counter.
9. Determine the corrected cpm by subtracting the blank control value (see step 3) from each sample and calculate the kinase specific activity

#### Calculations:

1. Specific Radioactivity (SR) of ATP (cpm/nmole)

$$SR = \frac{\text{cpm of 5 } \mu\text{l of } \gamma\text{-}^{32}\text{P-ATP Assay Cocktail}}{\text{nmole of ATP}}$$

cpm – value from control (step 7)

nmole – 1.25 nmole (5 µl of 250 µM ATP Assay Cocktail)

2. Specific Kinase Activity (SA) (nmole/min/mg)

$$\text{nmole/min/mg} = \frac{\Delta\text{cpm} \times (25/20)}{SR \times E \times T}$$

SR = specific radioactivity of the ATP (cpm/nmole ATP)

Δcpm = cpm of the sample – cpm of the blank (step 3)

25 = total reaction volume

20 = spot volume

T = reaction time (minutes)

E = amount of enzyme (mg)

#### References

1. De Souza, P.M. et al., Mammalian Sterile20-like kinase 1 and the regulation of apoptosis. *Biochem Soc Trans.*, **32**, 485-488 (2004).
2. Avruch, J. et al., Nore1 and RASSF1 Regulation of Cell Proliferation and of the MST1/2 Kinases. *Methods Enzymol.*, **407**, 290-310 (2005).

PRECISIO is a registered trademark of Sigma-Aldrich Co. LLC.

TD,MAM 01/12-1