

Product Information

(±)-Thiopental solution

1.0 mg/mL±5% in methanol
analytical standard, for drug analysis

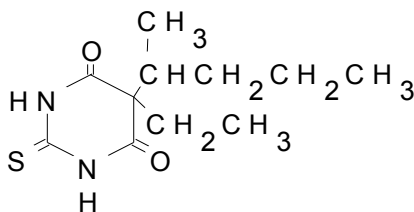
Catalog Number **T1022**

Lot Number 041M8724

Storage Temperature 2–8 °C

CAS RN 76-75-5

Synonyms: 5-Ethylidihydro-5-(1-methylbutyl)-2-thioxo-4,6(1H,5H)-pyrimidinedione; 5-Ethyl-5-(1-methylbutyl)-2-thiobarbituric acid



Product Description

Molecular Formula: C₁₁H₁₈N₂O₂S

Molecular Weight: 242.34

DEA Class: Exempt preparation of Class III

Concentration: 1.01 mg of (±)-thiopental/mL of GC grade methanol, concentration verified by UV.

Expiration Date: June 2014

Precautions and Disclaimer

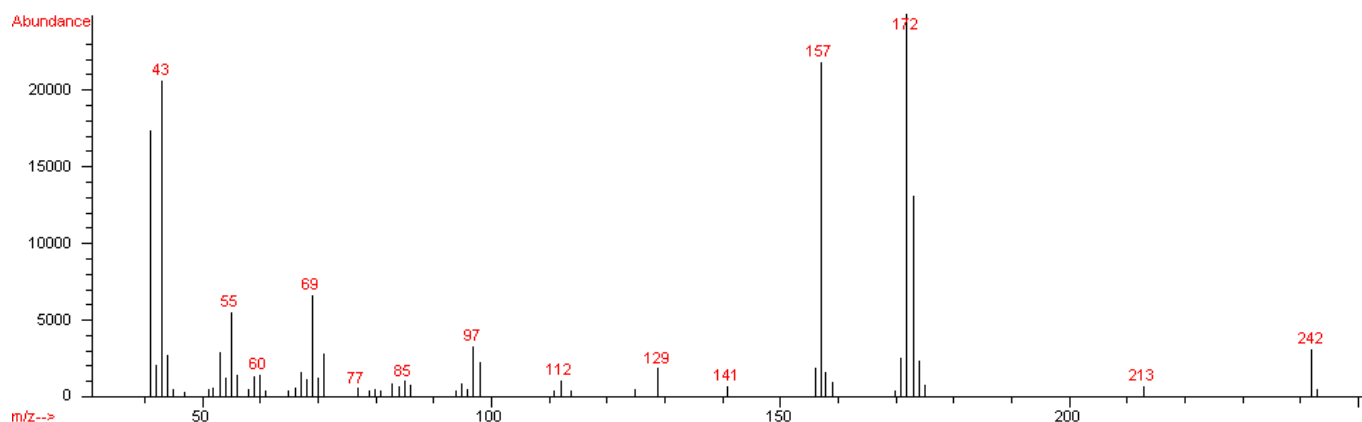
This product is for R&D use only, not for drug, household, or other uses. Please consult the Material Safety Data Sheet for information regarding hazards and safe handling practices.

Storage/Stability

Store the product at 2–8 °C. If stored at 2–8 °C in an airtight container, protected from light, decomposition of the product is less than 1% in 48 months. After opening, concentration may change due to loss of solvent.

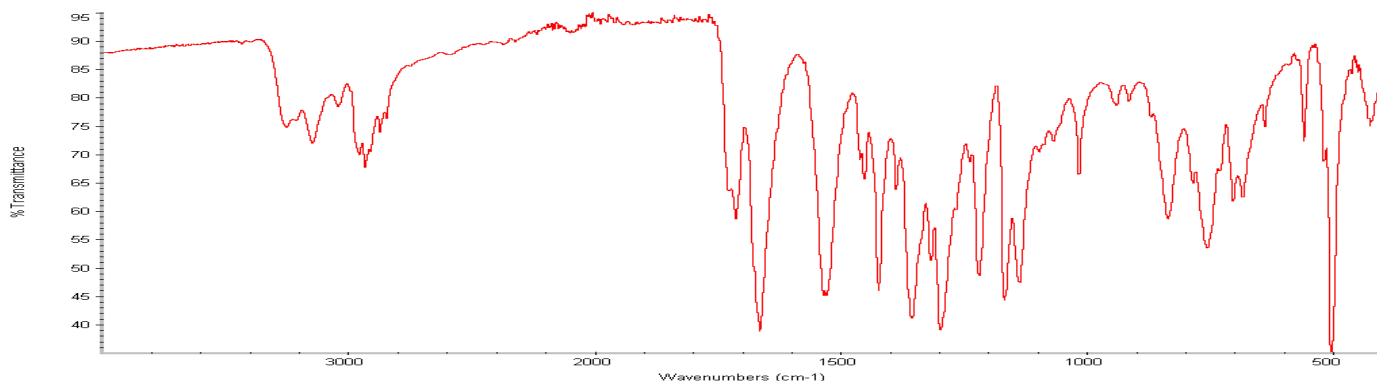
CWM,MAM 06/11-1

70 eV Electron Ionization Mass Spectrum



Hewlett-Packard 5890 Series II Gas Chromatograph
Hewlett-Packard 5971 Mass Selective Detector
Hewlett-Packard G1034C MS ChemStation (HP-DOS series)

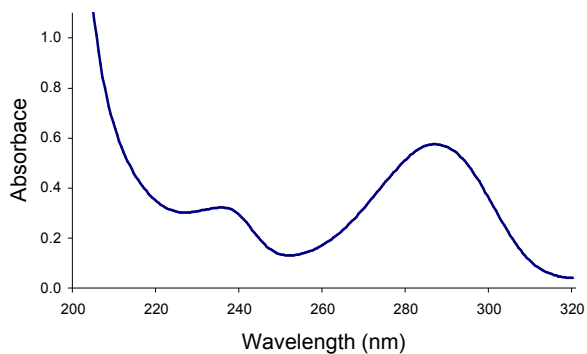
FT-IR



Nicolet 380 FT-IR Smart Orbit(ATR)

Ultraviolet Spectrum

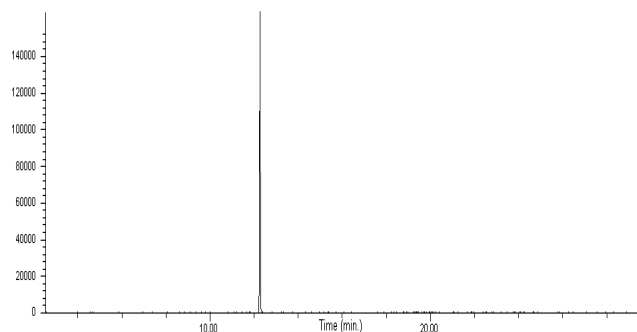
Peak	287.0 nm
Absorbance	0.5752
Solvent	Methanol
Dilution	1:199 (v/v)



Beckman-Coulter DU 800

Capillary Gas Chromatography

Column Supelco SPB-1 (Catalog Number 24162)
I.D. 0.20 mm **Length** 15 m **Film Thickness** 0.20 μm
Oven Temperature 50 °C (2 minutes), then 15 °C/minute to 300 °C, hold 11 minutes
Injector Temperature 250 °C, Split
Detector Hewlett-Packard 5971
Mass Selective Detector (70 eV, 40-500 m/z)



Hewlett-Packard 5890

Sigma brand products are sold through Sigma-Aldrich, Inc.
Sigma-Aldrich, Inc. warrants that its products conform to the information contained in this and other Sigma-Aldrich publications. Purchaser must determine the suitability of the product(s) for their particular use. Additional terms and conditions may apply. Please see reverse side of the invoice or packing slip.