

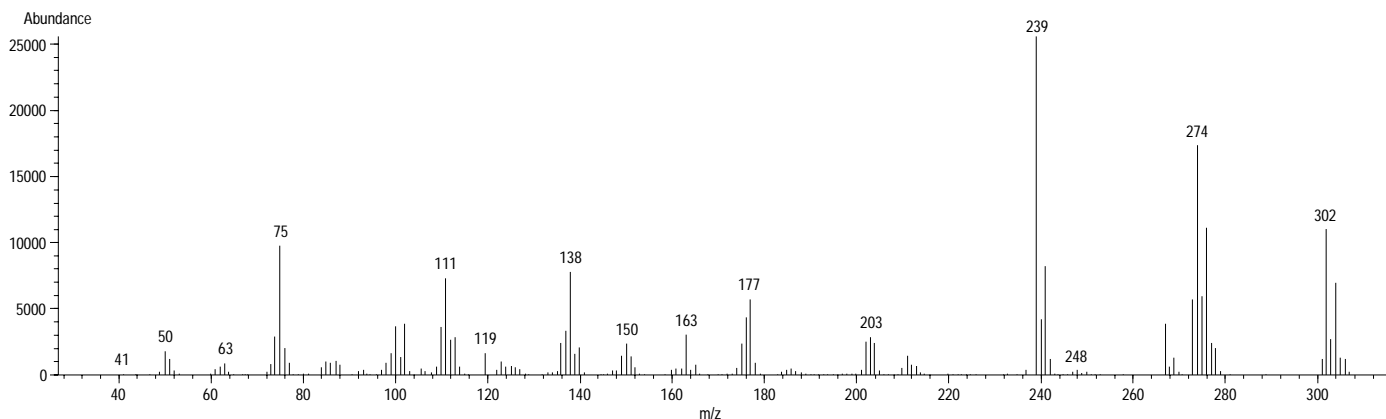
Product Information

(±)LORAZEPAM

Methanol Solution

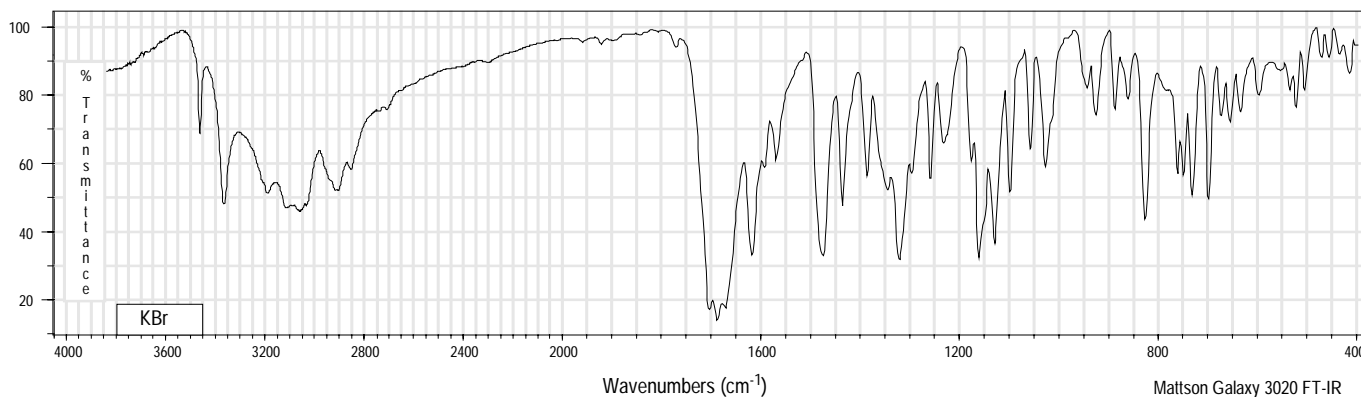
Product Number	L 0140	Synonyms	7-Chloro-5-(o-chlorophenyl)-1,3-dihydro-3-hydroxy-2H-1,4-benzodiazepin-2-one
Lot Number	111K8812	Stability	If stored at < 0°C in an air tight container, protected from light, decomposition of the product is less than 1% in 36 months. After opening, concentration may change due to loss of solvent.
CAS Number	[846-49-1]	Expiration Date	July 2005
Concentration	1.03 mg (±)Lorazepam/mL GC grade methanol (conc. verified by UV)	Storage	< 0°C; After opening, transfer contents to small vial provided for your convenience.
Molecular Formula	C ₁₅ H ₁₀ Cl ₂ N ₂ O ₂		
Molecular Weight	321.2		
DEA Class	Exempt preparation of Class IV		

70 eV Electron Ionization Mass Spectrum



Hewlett-Packard 5890 Series II Gas Chromatograph
 Hewlett-Packard 5971 Mass Selective Detector
 Hewlett-Packard G1034C MS ChemStation (HP-DOS series)

FT-IR

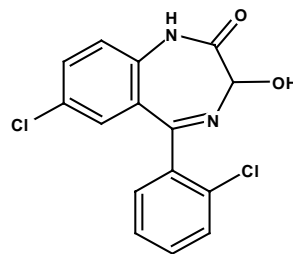


(±)LORAZEPAM

Methanol Solution

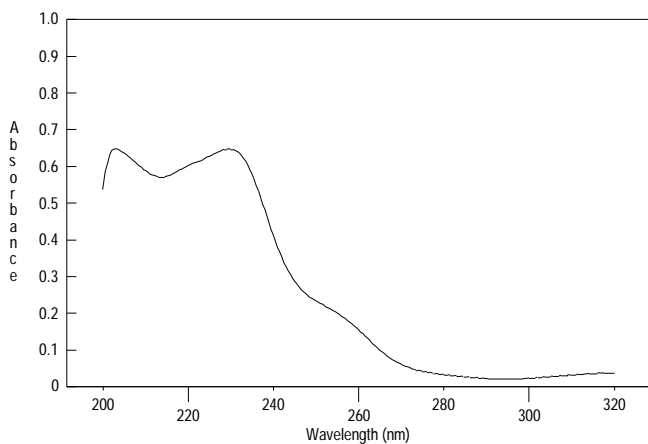
Product Number L 0140

Lot Number 111K8812



Ultraviolet Spectrum

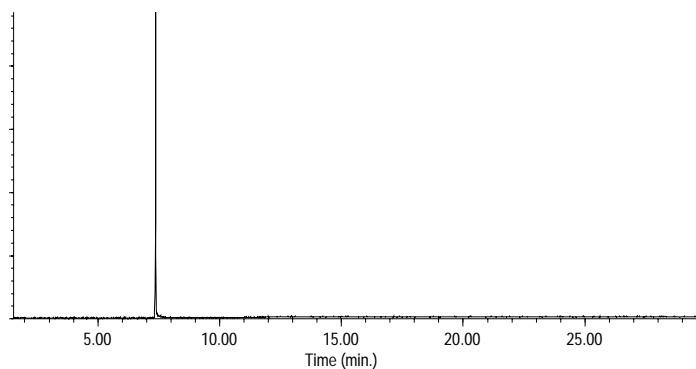
Peak	229.5 nm
Absorbance	0.646
Solvent	Methanol
Dilution	1 : 199 (v/v)



Bio-Tek Uvikon XL

Capillary Gas Chromatography

Column Supelco SPB-1 (Cat. No. 2-4162)
I.D. 0.20 mm **Length** 15 m **Film Thickness** 0.20 μ m
Oven Temperature 150°C (2 min.), then 15°/min. to 300°C, hold 18 min.
Injector Temperature 250°C, Split
Detector Hewlett-Packard 5971
Mass Selective Detector (70 eV, 40-500 m/z)



Hewlett-Packard 5890

L 0140/111K8812/11/16/01

This product is not for *in vitro* diagnostic procedures. For R&D use only. Not for drug, household or other uses.

Sigma brand products are sold through Sigma-Aldrich, Inc.

Sigma-Aldrich, Inc. warrants that its products conform to the information contained in this and other Sigma-Aldrich publications.

Purchaser must determine the suitability of the product(s) for their particular use. Additional terms and conditions may apply.

Please see reverse side of the invoice or packing slip.