

**Parteck® LUB Excipient**

# **A smooth operation**

**Achieve consistent  
lubrication performance.**

Parteck® LUB is a range of vegetable-origin stearates featuring excellent batch-to-batch consistency for reliable lubrication.

The life science business  
of Merck KGaA,  
Darmstadt, Germany  
operates as MilliporeSigma  
in the U.S. and Canada.

**SAFC®**

Pharma & Biopharma Raw  
Material Solutions

# Parteck® LUB Excipient

## Reliability in every sense.

When it comes to tablet production there is nothing more important than a smooth production process – in particular choosing the right lubricant. Parteck® LUB, a product line of our most effective excipients for lubrication, demonstrates excellent batch-to-batch consistency and helps you to achieve a reliable workflow in your tablet manufacture.

Parteck® LUB products are available in three vegetable-origin variants:

- Parteck® LUB MST (magnesium stearate)
- Parteck® LUB CST (calcium stearate)
- Parteck® LUB STA (stearic acid)

### PARTECK® LUB PROVIDES:



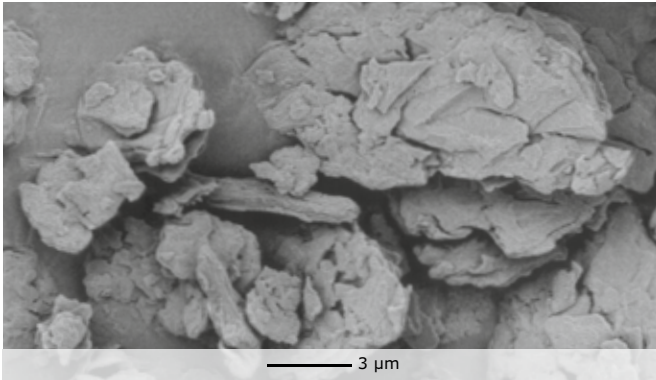
High batch-to-batch consistency



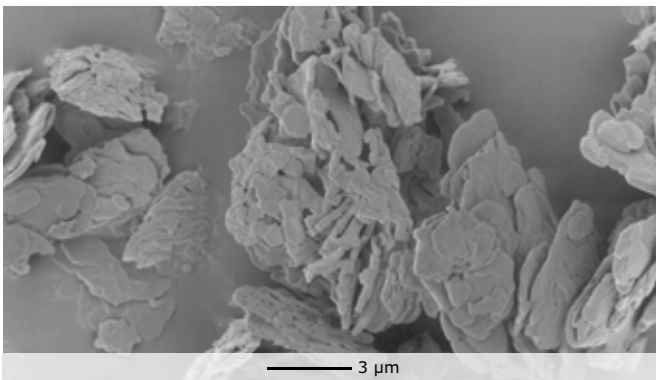
Reliable performance thanks to specified particle size and surface area



Vegetable origin and regulatory documentation for minimal qualification and registration efforts



SEM of Parateck® LUB MST



SEM of Parateck® LUB CST

	Parateck® LUB MST	Parateck® LUB CST	Parateck® LUB STA
d10	≥ 1 μm	≥ 0.8 mm	≥ 5 μm
d50	~ 5 μm	~ 4 μm	~ 35 μm
d90	≤ 20 μm	≤ 20 μm	≤ 200 μm
BET	5–12 m <sup>2</sup> /g	4–8 m <sup>2</sup> /g	0.90–1.40 m <sup>2</sup> /g

Table 1: Particle size and BET of Parateck® LUB.

## Excellent batch-to-batch consistency.

To demonstrate the galenical suitability of an excipient, the lubrication effect hinges on two crucial parameters: particle size and specific surface area. We set tight limits on both. The production processes are designed to allow for consistent quality with every batch, keeping your manufacturing running smoothly.

## Specified parameters.

We certify specific details on particle size ranges and the BET surface area for all Parateck® LUB. These parameters are essential in developing a stable formula for the lubricating film, enabling a reliable tableting behavior.

## Vegetable origin.

As a result of the BSE/TSE crisis, many pharmacopoeias call for additional manufacturing stages to inactivate pathogens in stearates. Good news: As they are made from vegetable raw materials, our Parateck® LUB keeps your regulatory work to a minimum.

## The Emprove® Program.

Ensuring the compliance of your pharma and bio-pharma products involves the compilation of a vast amount of data, which can be time- and resource-intensive. In order to facilitate and accelerate this process, we developed our Emprove® Program. It includes 400 pharma raw and starting materials and a selection of filtration and single-use products. Each product in the portfolio is complemented with three different types of dossiers supporting you throughout the different stages of your operations: qualification, risk assessment, and process optimization – all designed to help you speed your way through the regulatory maze.

Our knowledgeable team of technical and quality experts will share best practices and help guide you to a compliant solution that meets your performance goals.

Find out more at:  
[EMDMillipore.com/emprove](https://www.EMDMillipore.com/emprove)

Click. Explore.  
Learn more.

## PARTECK® PRODUCT PORTFOLIO

Excipients for oral solid dosage forms featuring unique particle properties and outstanding individual functionalities such as solubility enhancement or controlled release.

For more information, visit:

[EMDMillipore.com/pardeck](https://www.emdmillipore.com/pardeck)

## FORMULATION PRODUCT FINDER APP

Find the right product for specific applications at:

[EMDMillipore.com/formulationapp](https://www.emdmillipore.com/formulationapp)

# Ordering information

Cat. No.	Product	Pack size
1.00663.9020	Pardeck® LUB MST (magnesium stearate) EMPROVE® ESSENTIAL Ph Eur, BP, JP, NF, FCC	20 kg
1.00664.9020	Pardeck® LUB CST (calcium stearate) EMPROVE® ESSENTIAL Ph Eur, BP, JP, NF, FCC	20 kg
1.00661.9020	Pardeck® LUB STA (stearic acid) EMPROVE® ESSENTIAL Ph Eur, BP, JP, NF	20 kg

The typical technical data above serve to generally characterize the excipient. These values are not meant as specifications and they do not have binding character. The product specification is available separately, from the website: [EMDMillipore.com](https://www.emdmillipore.com)

We provide information and advice to our customers on application technologies and regulatory matters to the best of our knowledge and ability, but without obligation or liability. Existing laws and regulations are to be observed in all cases by our customers. This also applies in respect to any rights of third parties. Our information and advice do not relieve our customers of their own responsibility for checking the suitability of our products for the envisaged purpose.

For additional information, please visit [EMDMillipore.com](https://www.emdmillipore.com)

To place an order or receive technical assistance, please visit [EMDMillipore.com/contactPS](https://www.emdmillipore.com/contactPS)

