

**MILLIPORE  
SIGMA**

# Setting the standard for solid dose applications.

Our comprehensive  
portfolio of pharma raw  
materials.

The Life Science business of  
Merck KGaA, Darmstadt, Germany  
operates as MilliporeSigma  
in the U.S. and Canada.

**SAFC**<sup>®</sup>

Pharma & Biopharma Raw  
Material Solutions

# Comprehensive portfolio. Global presence.

Putting a world of formulations  
at your fingertips



## Managing solid formulation challenges

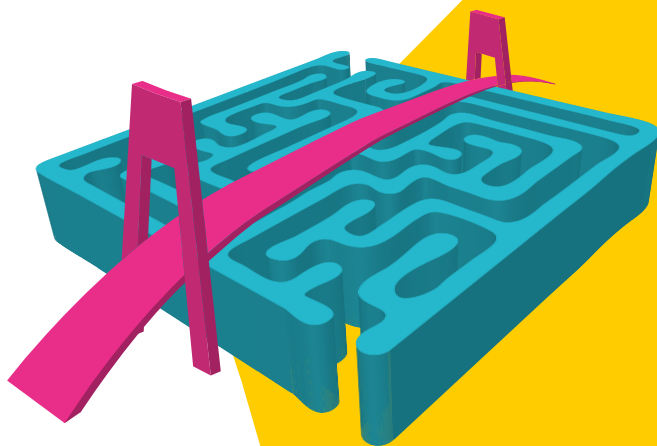
Solid dose formulations continue to be the most important dosage forms for pharmaceuticals. However, the complexity of manufacturing final drug products is becoming more and more challenging, and API stability, release kinetics and bioavailability limitations such as low API solubility are just a few of the many critical obstacles on the way to the market.

We have created a comprehensive product portfolio to meet your solid dosage needs, worldwide.

Our high-quality excipients and APIs are supported by our regulatory expertise and Emprove® Program, helping you simplify your supplier qualification and speed up processes, thus reducing the total cost of ownership.

### Benefits:

- Extensive product portfolio
- High-quality pharmaceutical raw materials
- Functionalized excipients addressing formulation challenges
- Emprove® Program for risk assessment
- Dedicated regulatory support



### The Emprove® Program Your fast track through regulatory challenges.

Ensuring the compliance of your pharma and biopharma products involves the compilation of a vast amount of data, which can be time- and resource-intensive. In order to facilitate and accelerate this process, we developed our Emprove® Program. It includes 400 pharma raw and starting materials and a selection of filtration and single-use products. Each product in the portfolio is complemented with three different types of dossiers supporting you throughout the different stages of your operations: qualification, risk assessment, and process optimization – all designed to help you speed your way through the regulatory maze.

Find out more:

[EMDMillipore.com/emprove](https://www.emdmillipore.com/emprove)

Emprove® Suite provides 24/7 access to all Emprove® dossiers online.

For more information on how to subscribe, visit: [EMDMillipore.com/emprovesuite](https://www.emdmillipore.com/emprovesuite)

Simplified  
with Parateck

# intelligent formulation Made easy

With Parateck® excipients  
for solid dosage forms

Our Parateck® product portfolio offers superior excipients created specifically for solid dosage forms. It features unique particle properties and outstanding individual functionalities including, among others, solubility enhancement and controlled release. As formulators benefit from excellent tableting behavior and simplified formulation design, we make intelligent formulation an easy task for everyone.



## formulation<sup>®</sup> excipients

### Optimized drug delivery

Functional excipients addressing different release kinetics of your formulation and administration routes

- **Parteck<sup>®</sup> SRP 80:**  
polyvinyl alcohol-based excipient for consistent, sustained drug release of your oral formulation
- **Parteck<sup>®</sup> ODT:**  
rapid disintegration and exceptional strength of orally disintegrating tablets
- **Parteck<sup>®</sup> M DPI:**  
mannitol-based versatile alternative carrier option for dry powder inhalation application

### Flexible tableting

Functional excipients for different tableting technologies that achieve high tablet hardness at low compression forces, short disintegration times, and tailored API dosages due to unique particle surface

- **Parteck<sup>®</sup> M:**  
directly compressible excipient, combining stability and rapid disintegration
- **Parteck<sup>®</sup> Delta M:**  
convertible mannitol specifically designed for wet granulation
- **Parteck<sup>®</sup> LUB:**  
a range of vegetable-origin stearates for a reliable lubrication
- **Parteck<sup>®</sup> SI:**  
directly compressible sorbitol, combining excellent flowability and a great mouth feel
- **Parteck<sup>®</sup> CCS:**  
superdisintegrant for solid formulations
- **Parteck<sup>®</sup> Mg DC:**  
directly compressible magnesium salt

### Enhanced solubility

Functional excipients that boost the efficacy of your final drug product by enhancing API solubility

- **Parteck<sup>®</sup> SLC:**  
silica drug carrier with a highly functional surface area for amorphous drug load
- **Parteck<sup>®</sup> MXP:**  
polyvinyl alcohol for hot-melt extrusion, allowing for stable and high drug loads

For more information, visit:  
[EMDMillipore.com/parteck](https://EMDMillipore.com/parteck)

Cat. No.	Article
pH Adjusters	
100090	Adipic acid EMPROVE® ESSENTIAL Ph Eur, NF, FCC, E 355
101136	Ammonium carbonate EMPROVE® ESSENTIAL Ph Franç, NF, E 503
101124	Ammonium dihydrogen phosphate cryst. extra pure
101131	Ammonium hydrogen carbonate EMPROVE® ESSENTIAL Ph Eur, BP, E 503
103761	Ammonium iron(III) citrate approx. 28 % Fe DAC
103762	Ammonium iron(III) citrate about 18 % Fe DAC
101155	di-Ammonium hydrogen citrate suitable for use as excipient EMPROVE® exp
101206	di-Ammonium hydrogen phosphate EMPROVE® ESSENTIAL NF
102052	Calcium acetate hydrate extra pure DAC, FCC
102064	Calcium carbonate precipitated ( $\leq 0.002\%$ Fe) EMPROVE® ESSENTIAL Ph Eur, BP, USP, JP, FCC
102069	Calcium carbonate precipitated, suitable for use as excipient EMPROVE® ESSENTIAL Ph Eur, BP, USP, E 170, FCC
102074	Calcium carbonate precipitated, special grade ( $\leq 0.002\%$ Fe) EMPROVE® ESSENTIAL Ph Eur, BP, USP
112120	Calcium carbonate precipitated ( $\leq 0.0001\%$ Al) EMPROVE® ESSENTIAL Ph Eur, BP, USP, JP, FCC, E 170
102102	Calcium lactate pentahydrate EMPROVE® ESSENTIAL Ph Eur, BP, USP, E 327
102092	tri-Calcium dicitrate tetrahydrate EMPROVE® ESSENTIAL DAC, USP, E 333, FCC
100247	Citric acid anhydrous fine-granular, suitable for use as excipient EMPROVE® exp Ph Eur, BP, JP, USP, E 330, FCC
100241	Citric acid anhydrous powder, suitable for use as excipient EMPROVE® exp Ph Eur, BP, JP, USP, E 330, FCC
100242	Citric acid monohydrate cryst., suitable for use as excipient EMPROVE® exp Ph Eur, BP, JP, USP, E 330, FCC
100243	Citric acid monohydrate powder, suitable for use as excipient EMPROVE® exp Ph Eur, BP, JP, USP, E 330, FCC
817073	Fumaric acid EMPROVE® ESSENTIAL NF, JPE
105870	Magnesium hydroxide extra pure Ph Eur, BP, USP
817058	Maleic acid EMPROVE® ESSENTIAL Ph Eur, NF
100383	DL-Malic acid EMPROVE® ESSENTIAL Ph Eur, NF, FCC, E 296
106187	Meglumine EMPROVE® ESSENTIAL Ph Eur, ChP, JP, USP
104820	Potassium acetate extra pure Ph Eur, BP, E 261
104924	Potassium carbonate EMPROVE® ESSENTIAL Ph Eur, USP, E 501
104852	Potassium hydrogen carbonate EMPROVE® ESSENTIAL Ph Eur, BP, USP, FCC, E 501
104871	Potassium dihydrogen phosphate cryst., EMPROVE® ESSENTIAL Ph Eur, BP, JPC, NF, E 340
105101	di-Potassium hydrogen phosphate anhydrous, EMPROVE® ESSENTIAL Ph Eur, BP, E 340
104956	tri-Potassium citrate monohydrate EMPROVE® ESSENTIAL Ph Eur, BP, USP, FCC, E 332
106236	Sodium acetate anhydrous EMPROVE® api USP, FCC, E 262
106281	Sodium acetate anhydrous extra pure USP, FCC, E 262
106265	Sodium acetate trihydrate extra pure EMPROVE® ESSENTIAL Ph Eur, BP, JP, USP, FCC, E 262
106398	Sodium carbonate anhydrous, EMPROVE® ESSENTIAL Ph Eur, BP, JP, NF
106384	Sodium carbonate decahydrate EMPROVE® ESSENTIAL Ph Eur, BP, E 500
106386	Sodium carbonate monohydrate EMPROVE® ESSENTIAL Ph Eur, BP, NF, E 500



Cat. No.	Article
106345	Sodium dihydrogen phosphate dihydrate EMPROVE® ESSENTIAL Ph Eur, BP, USP, JPE, E 339
106349	Sodium dihydrogen phosphate monohydrate EMPROVE® ESSENTIAL BP, USP
817054	Sodium gluconate USP, E 576
106585	di-Sodium hydrogen phosphate anhydrous EMPROVE® ESSENTIAL Ph Eur, BP, USP, JPE, E 339
106576	di-Sodium hydrogen phosphate dihydrate EMPROVE® ESSENTIAL Ph Eur, BP, USP
106573	di-Sodium hydrogen phosphate dodecahydrate cryst. EMPROVE® ESSENTIAL Ph Eur, BP, JP, USP
106574	di-Sodium hydrogen phosphate heptahydrate EMPROVE® ESSENTIAL DAC, USP
111037	tri-Sodium citrate anhydrous, EMPROVE® ESSENTIAL USP, FCC, E 331
106432	tri-Sodium citrate dihydrate cryst., EMPROVE® ESSENTIAL Ph Eur, BP, JP, USP, E 331
106447	tri-Sodium citrate dihydrate EMPROVE® ESSENTIAL Ph Eur, BP, JP, USP, E 331
106446	tri-Sodium citrate dihydrate powder, EMPROVE® ESSENTIAL Ph Eur, BP, JP, USP, E 331
106431	tri-Sodium citrate 5,5-hydrate EMPROVE® ESSENTIAL FU VIII, E 331
106577	tri-Sodium phosphate dodecahydrate EMPROVE® ESSENTIAL NF, E 339
100662	Sorbic acid EMPROVE® ESSENTIAL Ph Eur, BP, NF, FCC, E 200
100681	Succinic acid cryst., EMPROVE® ESSENTIAL NF, JPE, ACS
100802	L(+)-Tartaric acid cryst., EMPROVE® ESSENTIAL Ph Eur, BP, JP, NF, E 334
100803	L(+)-Tartaric acid powder EMPROVE® ESSENTIAL Ph Eur, BP, JP, NF, E 334

## Formulation Product Finder App

Find the right product for specific applications with our Formulation Product Finder App:

[EMDMillipore.com/formulationapp](https://EMDMillipore.com/formulationapp)



Cat. No.	Article
Ingredients	
101042	Aluminium potassium sulfate dodecahydrate EMPROVE® ESSENTIAL Ph Eur, BP, USP
100102	4-Aminobenzoic acid suitable for use as excipient EMPROVE® exp USP
101136	Ammonium carbonate EMPROVE® ESSENTIAL Ph Franç, NF, E 503
101142	Ammonium chloride EMPROVE® ESSENTIAL Ph Eur, BP, USP
101806	Benzyl benzoate Ph Eur, BP, USP
CH2900010	Calcium folinate amorphous
CH2900011	Calcium folinate crystalline
CH2900044	Calcium folinate pure
CH2900018	Calcium levofolate pentahydrate
102160	Calcium sulfate dihydrate precipitated EMPROVE® ESSENTIAL Ph Eur, BP, E 516
102555	Charcoal activated Ph Eur
500117	Choline chloride EMPROVE® ESSENTIAL DAB 10, FCC
500115	Choline hydrogen tartrate EMPROVE® ESSENTIAL DAB 10, FCC
102644	Collodion 4 %
104212	Guaiacol extra pure Ph Franç X
104760	Iodine purified by sublimation EMPROVE® ESSENTIAL Ph Eur, BP, USP
103815	Iron extra pure reduced particle size about 10 µm
103814	Iron(III)-chloride-hexahydrate EMPROVE® ESSENTIAL Ph Eur, JPE
103862	Iron(III) citrate hydrate (about 19 % Fe)
103962	Iron(II) fumarate extra pure (ca. 33 % Fe) Ph Eur, BP, USP, FCC
103963	Iron(II) sulfate heptahydrate cryst., EMPROVE® ESSENTIAL Ph Eur, BP, USP, FCC
103967	Iron(II) sulfate hydrate (about 87 % FeSO <sub>4</sub> ) extra pure Ph Eur, BP, USP
108117	Kieselguhr purified and calcined, EMPROVE® ESSENTIAL NF
CH2900056	Levomefolate calcium
105671	Lithium carbonate EMPROVE® ESSENTIAL Ph Eur, BP, USP
105683	tri-Lithium citrate tetrahydrate EMPROVE® ESSENTIAL Ph Eur, BP
105832	Magnesium chloride hexahydrate cryst. EMPROVE® Ph Eur, BP, USP, JPC, FCC, E 511
105872	Magnesium hydrogen phosphate trihydrate EMPROVE® ESSENTIAL DAB
105829	Magnesium hydroxide carbonate heavy extra pure Ph Eur, BP, USP, E 504
105828	Magnesium hydroxide carbonate light extra pure Ph Eur, BP
105870	Magnesium hydroxide extra pure Ph Eur, BP, USP
105867	Magnesium oxide heavy EMPROVE® ESSENTIAL Ph Eur, BP, USP
105862	Magnesium oxide light extra pure Ph Eur, BP, E 530
105882	Magnesium sulfate heptahydrate EMPROVE® ESSENTIAL Ph Eur, BP, USP, JP
137182	Magnesium sulfate heptahydrate EMPROVE® EXPERT Ph Eur, BP, JP, USP
105999	Manganese(II) sulfate monohydrate spray dried EMPROVE® ESSENTIAL Ph Eur, USP, FCC



Cat. No.	Article
CH2900019	Metafolin® ground
CH2900020	Metafolin® micronized
104731	myo-Inositol EMPROVE® ESSENTIAL Ph Eur, FCC
500299	Nicotinamide EMPROVE® ESSENTIAL Ph Eur, BP, USP, JP, FCC
500005	Nicotinic acid extra pure Ph Eur, BP, USP
102440	Parateck® Mg DC (Magnesium hydroxide carbonate) heavy EMPROVE® ESSENTIAL Ph Eur, BP, USP, JP, E 504
104900	Potassium bromide EMPROVE® ESSENTIAL Ph Eur, BP, JP, USP
104935	Potassium chloride EMPROVE® ESSENTIAL Ph Eur, BP, JP, USP, FCC, E 508
104937	Potassium chloride EMPROVE® ESSENTIAL Ph Eur, BP, E 508
105050	Potassium iodate extra pure FCC
105061	Potassium nitrate suitable for use as excipient Ph Eur, BP, USP, FCC, E 252
105150	Potassium sulfate cryst. EMPROVE® ESSENTIAL Ph Eur, BP, JP
105151	Potassium sulfate powder EMPROVE® ESSENTIAL Ph Eur, BP, JP, E 515
501260	Pyridoxol (pyridoxine) vitamin B <sub>6</sub> base EMPROVE® ESSENTIAL
107590	Resorcinol extra pure BP, Ph Eur, USP
500257	Riboflavin Ph Eur, BP, JP, USP, E 101 (i)
500259	Riboflavine 5'-phosphate monosodium salt dihydrate (vitamin B <sub>2</sub> 5'-phosphate monosodium salt) Ph Eur, BP, JP, USP, E 101a
101510	Silver nitrate cryst. extra pure Ph Eur, BP, USP
106360	Sodium bromide EMPROVE® ESSENTIAL Ph Eur, BP, JP, USP
106323	Sodium hydrogen carbonate EMPROVE® ESSENTIAL Ph Eur, BP, JP, USP, FCC, E 500
106520	Sodium iodide EMPROVE® ESSENTIAL Ph Eur, BP, JP, USP
106445	Sodium L-glutamate monohydrate EMPROVE® ESSENTIAL FCC, NF, E 621
106544	Sodium nitrite extra pure Ph Eur, USP
106643	Sodium sulfate anhydrous EMPROVE® ESSENTIAL Ph Eur, BP, USP, E 514
106645	Sodium sulfate anhydrous extra pure fine powder Ph Eur, BP, USP
106641	Sodium sulfate decahydrate cryst. Ph Eur, USP, BP
106642	Sodium sulfate decahydrate cryst. EMPROVE® ESSENTIAL Ph Eur, BP, JPE, USP
500923	Thiamine chloride hydrochloride (Vitamin B <sub>1</sub> -hydrochloride) Ph Eur, BP, USP, FCC
108167	Thymol cryst., suitable for use as excipient EMPROVE® exp Ph Eur, BP, NF
107813	Tin(II) chloride dihydrate EMPROVE® ESSENTIAL Ph Eur, BP, JPE
108484	Urea beads EMPROVE® ESSENTIAL USP
108486	Urea cryst. EMPROVE® ESSENTIAL Ph Eur, BP, USP, JP
524950	Vitamin B12 (cyanocobalamin) Ph Eur, BP, USP
CH2900034	Zinc histidine dihydrate
108808	Zinc hydroxide carbonate pure (zinc carbonate basic)
108846	Zinc oxide EMPROVE® ESSENTIAL Ph Eur, BP, JP, USP
108882	Zinc sulfate monohydrate EMPROVE® ESSENTIAL Ph Eur, USP

Cat. No.	Article
<b>Surfactants and Stabilizers</b>	
102052	Calcium acetate hydrate extra pure DAC, FCC
142020	Cyclodextrin HPB suitable for use as excipient EMPROVE® exp Ph Eur, NF
105321	D(-)-Fructose EMPROVE® ESSENTIAL Ph Eur, BP, USP, FCC
108346	D(+)-Glucose monohydrate suitable for use as excipient EMPROVE® exp Ph Eur, BP, USP
137096	D(-)-Mannitol EMPROVE® EXPERT Ph Eur, BP, USP, JP
105988	D(-)-Mannitol fine powder EMPROVE® ESSENTIAL Ph Eur, BP, USP, JP, FCC, E 421
105303	D(-)-Mannitol low in endotoxins suitable for use in solution EMPROVE® API Ph Eur, BP, USP, JP
106187	Meglumine EMPROVE® ESSENTIAL Ph Eur, ChP, JP, USP
115079	Parteck® SI 200 (Sorbitol) EMPROVE® ESSENTIAL Ph Eur, BP, JP, NF, E 420
137112	Poloxamer 188 EMPROVE® EXPERT (stabilized with 70 ppm BHT) Ph Eur, NF
141350	Polyvinyl alcohol 4–88 suitable for use as excipient EMPROVE® exp Ph Eur, USP, JPE
141354	Polyvinyl alcohol 5–88 suitable for use as excipient EMPROVE® exp Ph Eur, USP, JPE
141351	Polyvinyl alcohol 8–88 suitable for use as excipient EMPROVE® exp Ph Eur, USP, JPE
141355	Polyvinyl alcohol 18–88, powder suitable for use as excipient EMPROVE® exp Ph Eur, USP
141352	Polyvinyl alcohol 26–88 suitable for use as excipient EMPROVE® exp Ph Eur, USP, JPE
141353	Polyvinyl alcohol 40–88 suitable for use as excipient EMPROVE® exp Ph Eur, USP, JPE
141356	Polyvinyl alcohol 28–99 suitable for use as excipient EMPROVE® exp Ph Eur, JPE
105050	Potassium iodate extra pure FCC
107653	Sucrose EMPROVE® ESSENTIAL Ph Eur, BP, JP, NF
100892	Sucrose low in endotoxins suitable for use as excipient EMPROVE® exp Ph Eur, BP, JP, NF
817072	Tween® 20 (Polysorbate) EMPROVE® ESSENTIAL Ph Eur, JPE, NF
817076	Tween® 60 (Polysorbate) EMPROVE® ESSENTIAL Ph Eur, JPE, NF
817061	Tween® 80 (Polysorbate) EMPROVE® ESSENTIAL Ph Eur, JP, NF
<b>Binders and Fillers</b>	
101615	Agar extra pure, EMPROVE® ESSENTIAL Ph Eur, BP
105006	Bole white powder low bacterial content, for internal use, EMPROVE® ESSENTIAL Ph Eur, BP
102144	Calcium hydrogen phosphate anhydrous extra fine powder EMPROVE® ESSENTIAL Ph Eur, BP, USP, FCC, E 341 (ii)
102304	Calcium hydrogen phosphate anhydrous extra fine powder suitable for use as excipient EMPROVE® exp Ph Eur, BP, JP, USP, FCC, E 341 (ii)
102146	Calcium hydrogen phosphate dihydrate EMPROVE® exp Ph Eur, BP, USP, FCC, E 341 (ii)
102143	Calcium phosphate dried EMPROVE® ESSENTIAL Ph Eur, BP, E 341 (iii)
104072	Gelatin (sheets) EMPROVE® ESSENTIAL Ph Eur, BP, NF
104078	Gelatin powder, EMPROVE® ESSENTIAL Ph Eur, BP, NF
108346	D(+)-Glucose monohydrate suitable for use as excipient EMPROVE® exp Ph Eur, BP, USP
104228	Gum arabic spray-dried, EMPROVE® ESSENTIAL Ph Eur, BP
107656	Lactose monohydrate (milk sugar) powder EMPROVE® ESSENTIAL Ph Eur, BP, NF, JP

Cat. No.	Article
108195	Lactose monohydrate (milk sugar) special grade for tableting EMPROVE® ESSENTIAL Ph Eur, BP, NF, JP
105911	Maltose monohydrate EMPROVE® ESSENTIAL
105980	D(-)-Mannitol EMPROVE® ESSENTIAL Ph Eur, BP, USP, JP, FCC, E 421
105988	D(-)-Mannitol fine powder EMPROVE® ESSENTIAL Ph Eur, BP, USP, JP, FCC, E 421
112635	Parateck® Delta M (Mannitol) EMPROVE® ESSENTIAL Ph Eur, BP, USP, JP, E 421
100494	Parateck® M 100 (Mannitol) EMPROVE® ESSENTIAL Ph Eur, BP, JP, USP, E 421
100419	Parateck® M 200 (Mannitol) EMPROVE® ESSENTIAL Ph Eur, BP, JP, USP, E 421
103668	Parateck® M DPI EMPROVE® EXPERT Ph EUR, BP, USP, JP, E 421
102440	Parateck® Mg DC (Magnesium hydroxide carbonate) heavy EMPROVE® ESSENTIAL Ph Eur, BP, USP, JP, E 504
100490	Parateck® ODT EMPROVE® ESSENTIAL
103583	Parateck® SI 150 (Sorbitol) EMPROVE® ESSENTIAL Ph Eur, BP, JP, NF, JSFA, E 420
115079	Parateck® SI 200 (Sorbitol) EMPROVE® ESSENTIAL Ph Eur, BP, JP, NF, E 420
103140	Parateck® SI 400 (Sorbitol) EMPROVE® ESSENTIAL Ph Eur, BP, JSFA, NF, E 420
103557	Parateck® SI 450 (Sorbitol) EMPROVE® ESSENTIAL NF, FCC, JSFA
817009	Polyethylene glycol 1000 EMPROVE® ESSENTIAL Ph Eur
817005	Polyethylene glycol 1500 (scales) EMPROVE® ESSENTIAL Ph Eur
817019	Polyethylene glycol 3000 EMPROVE® ESSENTIAL Ph Eur
817006	Polyethylene glycol 4000 (powder) EMPROVE® ESSENTIAL Ph Eur
817063	Polyethylene glycol 4000 (scales) EMPROVE® ESSENTIAL Ph Eur
817007	Polyethylene glycol 6000 EMPROVE® ESSENTIAL Ph Eur
817018	Polyethylene glycol 20000 EMPROVE® ESSENTIAL Ph Eur
101253	Starch soluble extra pure
107653	Sucrose EMPROVE® ESSENTIAL Ph Eur, BP, JP, NF
108197	Tableting aid K (cellulose powder) EMPROVE® ESSENTIAL Ph Eur, BP, JP, NF, E 460ii
100805	Titanium(IV) oxide EMPROVE® ESSENTIAL Ph Eur, BP, USP, JP, E 171

Cat. No.	Article
<b>Coatings and Supporting Material</b>	
100090	Adipic acid EMPROVE® ESSENTIAL Ph Eur, NF, FCC, E 355
105006	Bole white powder low bacterial content, for internal use, EMPROVE® ESSENTIAL Ph Eur, BP
817067	Dibutyl sebacate NF
817009	Polyethylene glycol 1000 EMPROVE® ESSENTIAL Ph Eur
817005	Polyethylene glycol 1500 (scales) EMPROVE® ESSENTIAL Ph Eur
817019	Polyethylene glycol 3000 EMPROVE® ESSENTIAL Ph Eur
817006	Polyethylene glycol 4000 (powder) EMPROVE® ESSENTIAL Ph Eur
817063	Polyethylene glycol 4000 (scales) EMPROVE® ESSENTIAL Ph Eur
817007	Polyethylene glycol 6000 EMPROVE® ESSENTIAL Ph Eur
817018	Polyethylene glycol 20000 EMPROVE® ESSENTIAL Ph Eur
141350	Polyvinyl alcohol 4-88 suitable for use as excipient EMPROVE® exp Ph Eur, USP, JPE
141354	Polyvinyl alcohol 5-88 suitable for use as excipient EMPROVE® exp Ph Eur, USP, JPE
141351	Polyvinyl alcohol 8-88 suitable for use as excipient EMPROVE® exp Ph Eur, USP, JPE
141355	Polyvinyl alcohol 18-88, powder suitable for use as excipient EMPROVE® exp Ph Eur, USP
141352	Polyvinyl alcohol 26-88 suitable for use as excipient EMPROVE® exp Ph Eur, USP, JPE
141353	Polyvinyl alcohol 40-88 suitable for use as excipient EMPROVE® exp Ph Eur, USP, JPE
141356	Polyvinyl alcohol 28-99 suitable for use as excipient EMPROVE® exp Ph Eur, JPE
100805	Titanium(IV) oxide EMPROVE® ESSENTIAL Ph Eur, BP, USP, JP, E 171
817059	Triethyl citrate Ph Eur, JPE, NF
111544	Wax white in pastilles EMPROVE® ESSENTIAL Ph Eur, BP
<b>Disintegrants</b>	
102310	Parteck® CCS Croscarmellose Sodium EMPROVE® ESSENTIAL Ph Eur, JP, NF
101253	Starch soluble extra pure
<b>Taste Modifiers</b>	
100090	Adipic acid EMPROVE® ESSENTIAL Ph Eur, NF, FCC, E 355
102092	tri-Calcium dicitrate tetrahydrate EMPROVE® ESSENTIAL DAC, USP, E 333, FCC
100247	Citric acid anhydrous fine-granular, suitable for use as excipient EMPROVE® exp Ph Eur, BP, JP, USP, E 330, FCC
100241	Citric acid anhydrous powder, suitable for use as excipient EMPROVE® exp Ph Eur, BP, JP, USP, E 330, FCC
100242	Citric acid monohydrate cryst., suitable for use as excipient EMPROVE® exp Ph Eur, BP, JP, USP, E 330, FCC
100243	Citric acid monohydrate powder, suitable for use as excipient EMPROVE® exp Ph Eur, BP, JP, USP, E 330, FCC
105321	D(-)-Fructose EMPROVE® ESSENTIAL Ph Eur, BP, USP, FCC
108346	D(+)-Glucose monohydrate suitable for use as excipient EMPROVE® exp Ph Eur, BP, USP
105911	Maltose monohydrate EMPROVE® ESSENTIAL
105995	(-)-Menthol EMPROVE® ESSENTIAL Ph Eur, BP, JP, USP
100494	Parteck® M 100 (Mannitol) EMPROVE® ESSENTIAL Ph Eur, BP, JP, USP, E 421
100419	Parteck® M 200 (Mannitol) EMPROVE® ESSENTIAL Ph Eur, BP, JP, USP, E 421

Cat. No.	Article
100490	Parteck® ODT EMPROVE® ESSENTIAL
103583	Parteck® SI 150 (Sorbitol) EMPROVE® ESSENTIAL Ph Eur, BP, JP, NF, JSFA, E 420
115079	Parteck® SI 200 (Sorbitol) EMPROVE® ESSENTIAL Ph Eur, BP, JP, NF, E 420
103140	Parteck® SI 400 (Sorbitol) EMPROVE® ESSENTIAL Ph Eur, BP, JSFA, NF, E 420
103557	Parteck® SI 450 (Sorbitol) EMPROVE® ESSENTIAL NF, FCC, JSFA
817022	Saccharin EMPROVE® ESSENTIAL Ph Eur, NF
817042	Saccharin sodium dihydrate EMPROVE® ESSENTIAL Ph Eur, USP
817044	Sodium cyclamate EMPROVE® ESSENTIAL Ph Eur, BP
100895	Sucralose granular EMPROVE® ESSENTIAL Ph Eur, NF, JPE
100894	Sucralose powder EMPROVE® ESSENTIAL Ph Eur, NF, JPE
107653	Sucrose EMPROVE® ESSENTIAL Ph Eur, BP, JP, NF
100802	L(+)-Tartaric acid cryst., EMPROVE® ESSENTIAL Ph Eur, BP, JP, NF, E 334
100803	L(+)-Tartaric acid powder EMPROVE® ESSENTIAL Ph Eur, BP, JP, NF, E 334
108510	Vanillin EMPROVE® ESSENTIAL Ph Eur, BP, NF
<b>Lubricants and Glidants</b>	
100664	Parteck® LUB CST (Calcium stearate vegetable grade) EMPROVE® ESSENTIAL Ph Eur, BP, JP, NF, FCC
100663	Parteck® LUB MST (Magnesium stearate vegetable grade) EMPROVE® ESSENTIAL Ph Eur, BP, JP, NF, FCC
100661	Parteck® LUB STA 50 (Stearic acid 50 vegetable grade) EMPROVE® ESSENTIAL Ph Eur, BP, JP, NF
108070	Parteck® LUB Talc EMPROVE® ESSENTIAL Ph Eur, BP, JP, USP
817007	Polyethylene glycol 6000 EMPROVE® ESSENTIAL Ph Eur
817018	Polyethylene glycol 20000 EMPROVE® ESSENTIAL Ph Eur
113126	Silicon dioxide colloidal, highly dispersed EMPROVE® ESSENTIAL Ph Eur, NF, JP, E 551
<b>Antioxidants and Preservatives</b>	
500090	L(+)-Ascorbyl palmitate EMPROVE® ESSENTIAL Ph Eur, BP, NF, FCC, E 304
817023	Butylhydroxyanisole Ph Eur, NF, E 320
817074	Butylhydroxytoluene Ph Eur, JPE, NF, E 321
102092	tri-Calcium dicitrate tetrahydrate EMPROVE® ESSENTIAL DAC, USP, E 333, FCC
100241	Citric acid anhydrous powder, suitable for use as excipient EMPROVE® exp Ph Eur, BP, JP, USP, E 330, FCC
100242	Citric acid monohydrate cryst., suitable for use as excipient EMPROVE® exp Ph Eur, BP, JP, USP, E 330, FCC

Cat. No.	Article
<b>Antioxidants and Preservatives</b>	
100247	Citric acid anhydrous fine-granular, suitable for use as excipient EMPROVE® exp Ph Eur, BP, JP, USP, E 330, FCC
100243	Citric acid monohydrate powder, suitable for use as excipient EMPROVE® exp Ph Eur, BP, JP, USP, E 330, FCC
100887	Ethyl 4-hydroxybenzoate EMPROVE® ESSENTIAL Ph Eur, BP, JP, NF
817073	Fumaric acid EMPROVE® ESSENTIAL NF, JPE
106756	Methyl 4-hydroxybenzoate sodium salt EMPROVE® ESSENTIAL Ph Eur, BP, NF
106757	Methyl 4-hydroxybenzoate EMPROVE® ESSENTIAL Ph Eur, BP, JP, NF, FCC
105056	Potassium disulfite EMPROVE® ESSENTIAL Ph Eur, NF, E 224
105119	Potassium sorbate granules, EMPROVE® ESSENTIAL Ph Eur, BP, NF, FCC, E 202
105118	Potassium sorbate powder, EMPROVE® ESSENTIAL Ph Eur, BP, NF, FCC, E 202
107427	Propyl 4-hydroxybenzoate EMPROVE® ESSENTIAL Ph Eur, BP, JP, NF, FCC
107428	Propyl 4-hydroxybenzoate sodium salt EMPROVE® ESSENTIAL Ph Eur, BP, NF
106290	Sodium benzoate EMPROVE® ESSENTIAL Ph Eur, BP, NF, FCC, E 211
106357	Sodium disulfite (sodium metabisulfite) EMPROVE® ESSENTIAL Ph Eur, BP, JP, NF, E 223
106652	Sodium sulfite EMPROVE® ESSENTIAL Ph Eur, BP, NF, E 221
106514	Sodium thiosulfate pentahydrate cryst., EMPROVE® ESSENTIAL Ph Eur, BP, USP
100662	Sorbic acid EMPROVE® ESSENTIAL Ph Eur, BP, NF, FCC, E 200
100802	L(+)-Tartaric acid cryst., EMPROVE® ESSENTIAL Ph Eur, BP, JP, NF, E 334
100803	L(+)-Tartaric acid powder EMPROVE® ESSENTIAL Ph Eur, BP, JP, NF, E 334
<b>Advanced drug delivery</b>	
103668	Pardeck® M DPI EMPROVE® EXPERT Ph Eur, BP, USP, JP, E 421
141464	Pardeck® MXP (Polyvinyl alcohol) EMPROVE® ESSENTIAL Ph Eur, JPE, USP
120091	Pardeck® SLC 500
141439	Pardeck® SRP 80 (Polyvinyl alcohol) EMPROVE® ESSENTIAL Ph Eur, USP, JPE
<b>Candurin® Mineral Pearl Effect Colors</b>	
120606	Candurin® Blue Shimmer
120617	Candurin® Brown Amber
120610	Candurin® Gold Lustre
120608	Candurin® Gold Sheen
120604	Candurin® Gold Shimmer
120623	Candurin® Gold Sparkle
120607	Candurin® Green Shimmer
120609	Candurin® Light Gold

Cat. No.	Article
120624	Candurin® NXT Ruby Red
120625	Candurin® NXT Silver Blossom
120615	Candurin® Orange Amber
120613	Candurin® Red Amber
120619	Candurin® Red Lustre
120605	Candurin® Red Shimmer
120622	Candurin® Red Sparkle
120600	Candurin® Silver Fine
120602	Candurin® Silver Lustre
120601	Candurin® Silver Sheen
120603	Candurin® Silver Sparkle

### Smart Label

With our Smart Labels, accessing product-related data will no longer be a time-consuming task.

The barcodes will provide seamless access to essential product information and ensure correct data processing.

Find out more at:  
[EMDMillipore.comemprove-smart-label](http://EMDMillipore.comemprove-smart-label)







# SAFC®

Pharma & Biopharma Raw  
Material Solutions

The typical technical data above serve to generally characterize the product. These values are not meant as specifications and they do not have binding character. The product specification is available separately, from the website [EMDMillipore.com](https://www.EMDMillipore.com)

We provide information and advice to our customers on application technologies and regulatory matters to the best of our knowledge and ability, but without obligation or liability. Existing laws and regulations are to be observed in all cases by our customers. This also applies in respect to any rights of third parties. Our information and advice do not relieve our customers of their own responsibility for checking the suitability of our products for the envisaged purpose.

For additional information, please visit [EMDMillipore.com](https://www.EMDMillipore.com)  
To place an order or receive technical assistance, please visit [EMDMillipore.com/contactPS](https://www.EMDMillipore.com/contactPS)

MilliporeSigma, the Vibrant M, Emprove, Parreck, Candurin and SAFC are trademarks of Merck KGaA, Darmstadt, Germany or its affiliates. All other trademarks are the property of their respective owners. Detailed information on trademarks is available via publicly accessible resources. © 2018 Merck KGaA, Darmstadt, Germany and/or its affiliates. All Rights Reserved.

Lit. No. MS\_BR2742EN  
09/2018