

EZFluor™ 1-step Fluorescent Protein Gel Stain (1L)

Cat. # SCT145-1L

pack size: 1 L

FOR RESEARCH USE ONLY.
NOT FOR USE IN DIAGNOSTIC PROCEDURES.
NOT FOR HUMAN OR ANIMAL CONSUMPTION.

Store at 2-8°C



Data Sheet

page 1 of 2

Background

EZFluor™ 1-step Fluorescent Protein Gel Stain is a ready-to-use luminescent protein gel stain. EZFluor™ staining requires only a single 5-30 minute staining step without fixation. Destaining is optional. Moreover, the EZFluor™ protein stain offers safer handling and ease of disposal, because it is an aqueous-based solution that does not contain hazardous methanol or acetic acid. The EZFluor™ protein stain (after pH neutralization) passed environmental toxicity testing and is classified as non-hazardous to the environment under CCR Title 22 regulations.

EZFluor™ 1-step Fluorescent Protein Gel Stain can detect as little as approximately 1-10 ng of protein per band depending on the staining method used. Staining is fully compatible with mass spectrometry and Edman-based sequencing.

Storage

Store EZFluor™ 1-step Fluorescent Protein Gel Stain at 2-8°C. Protect From Light.

Spectral Properties

Absorbance: 280 nm, 450 nm (broad)

Emission: 610 nm

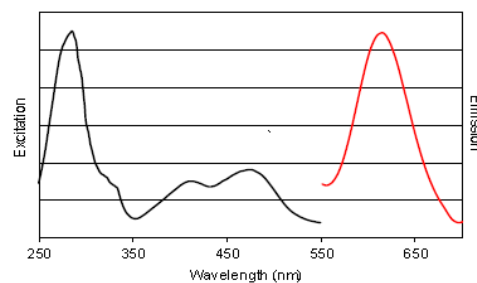


Figure 1. Excitation (left) and emission (right) spectra of EZFluor™ 1-step Fluorescent Protein Gel Stain.

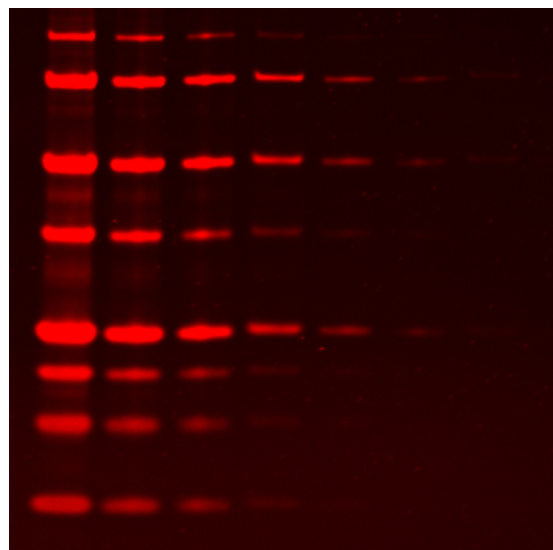


Figure 2. Red fluorescent EZFluor™ 1-step Fluorescent Protein Gel Stain is an alternative to time-consuming and expensive SYPRO® Ruby protein gel stain, and it can be imaged on a UV box or laser gel scanner.

Please visit www.millipore.com for additional product information and references.

Submit your published journal article, and earn credit toward future purchases. Visit www.millipore.com/publicationrewards to learn more!

EZFluor™ 1-step Fluorescent Protein Gel Stain (1L)

Cat # SCT145-1L

Assay Protocol

The following protocol is optimized for 1 mm thick, 8 cm X 8 cm SDS PAGE mini-gels.

1. Staining: After electrophoresis, place the unfixed gel in a clean container containing 25 mL of EZFluor™ protein stain per mini-gel and incubate with gentle rocking at room temperature. Bands may start to be detectable after 5 minutes depending on the amount of protein present. For the best sensitivity, stain for 60 minutes.

Note: The gel can be left in the staining solution overnight without over-staining.

Note: For larger gels, scale up the volume of staining solution accordingly using the mini-gel size as a reference.

Note: EZFluor™ protein stain can also be used to stain fixed gels. Fixation with 45% methanol/10% acetic acid for 1 hour before staining, followed by destaining in water can increase sensitivity.

2. Destaining (optional): Destaining is not required, but can reduce background and improve sensitivity. Gels can be destained in water for 2 x 5 minutes up to overnight with gentle rocking.

3. Imaging and Quantitation: Gels stained with EZFluor™ protein stain can be imaged with a variety of instruments:

a) UV Transilluminator: A UV transilluminator with a 300 nm excitation and an ethidium bromide filter may be used for viewing/imaging fluorescence.

b) LED-based Gel Viewer: Blue light LED-based gel boxes designed for safe viewing of DNA/RNA gels can also be used for viewing and imaging Lumitein-stained protein gels. Detection sensitivity may vary depending on device.

c) Laser-based Gel Scanner: Lumitein can be imaged on a gel scanner (such as a Typhoon® scanner) with 488 nm or 532 nm laser excitation with a detection window centered around 610 nm emission (such as the SYPRO® Ruby channel). Using 532 nm excitation may give lower background fluorescence compared to 488 nm excitation.

Note: For downstream analysis such as sequencing or mass spectrometry, gel slices can be processed the same way as SYPRO® Ruby stained gels.

4. Disposal: The EZFluor™ protein stain is a 100% aqueous solution uniquely formulated using chemicals that qualify as food ingredients that can be disposed down the drain. It does not contain methanol and is classified as non-hazardous to the environment. However, the solution is acidic and must be neutralized before drain disposal. To neutralize, add 653uL 1N sodium hydroxide per mL EZFluor™ protein stain and mix well. Alternatively, you can add 26 mg sodium hydroxide pellets per mL EZFluor™ protein stain and stir to dissolve completely.

EZFluor™ is a registered trademark of Merck KGaA

■ antibodies ■ Multiplex products ■ biotools ■ cell culture ■ enzymes ■ kits ■ proteins/peptides ■ siRNA/cDNA products

Please visit www.millipore.com for additional product information, test data and references

EMD Millipore Corporation, 28820 Single Oak Drive, Temecula, CA 92590, USA 1-800-437-7500

Technical Support: T: 1-800-MILLIPORE (1-800-645-5476) • F: 1-800-437-7502

FOR RESEARCH USE ONLY. Not for use in diagnostic procedures. Not for human or animal consumption. Purchase of this Product does not include any right to resell or transfer, either as a stand-alone product or as a component of another product. Any use of this Product for purposes other than research is strictly prohibited.

EMD Millipore®, the M mark, Upstate®, Chemicon®, Linco® and all other registered trademarks, unless specifically identified above in the text as belonging to a third party, are owned by Merck KGaA, Darmstadt, Germany. Copyright ©2008-2019 Merck KGaA, Darmstadt, Germany. All rights reserved.



We Buy 100% Certified Renewable Energy